

mitsubishi

GPP Function software for Windows
SW4D5C-GPPW-E(V),
Ladder Logic Test Function software
for Windows
SW4D5C-LLT-E(V)

Operating Manual
(Startup)

MELSEC

Mitsubishi Programmable Logic Controller

REVISIONS

* The manual number is given on the bottom left of the back cover.

Print Date	* Manual Number	Revision
Sep., 1999	IB(NA)-0800056-A	First edition

This manual confers no industrial property rights or any rights of any other kind, nor does it confer any patent licenses. Mitsubishi Electric Corporation cannot be held responsible for any problems involving industrial property rights which may occur as a result of using the contents noted in this manual.

© 1999 MITSUBISHI ELECTRIC CORPORATION

— SOFTWARE USER REGISTRATION —

After agreeing to the terms of the Software License Agreement included in the package, make the necessary entries in the Software User Registration Card and mail it to us to receive the following services.

We register users according to the received Software Registration Card and send the user ID and registration confirmation. (User registration is free of charge.)

1. Software Registration

Mail the Software User Registration Card included in the package, and you will receive direct mail for the latest information such as the new product release, version upgrade information, event information, etc.

2. Notes on Contact

Call our GPPW telephone center and tell us your product ID before asking questions.

- Please ask questions concretely and clearly using terms listed in the manual.

When requesting us to solve a problem, provide us with detailed information for reproducing the problem.

In addition, contact the respective manufacturers when asking questions about the operating system (OS) or the other vender's software products

User registration is valid only in Japan.

INTRODUCTION

Thank you for purchasing the Mitsubishi general-purpose MELSEC series sequencer.

Read this manual and make sure you understand the functions and performance of MELSEC series sequencer thoroughly in advance to ensure correct use.

Please make this manual available to the end user.

CONTENTS

REVISIONS	A- 1
SOFTWARE USER REGISTRATION	A- 2
CONTENTS	A- 3
ABOUT MANUALS.....	A- 4
ABBREVIATIONS AND TERMS IN THIS MANUAL.....	A- 5

1. GENERAL DESCRIPTION	1- 1 to 1- 2
2. SYSTEM CONFIGURATION	2- 1 to 2- 2
2.1 System Configuration	2- 1
2.2 Operating Environment	2- 2
3. INSTALLATION AND UNINSTALLATION	3- 1 to 3-14
3.1 Installation.....	3- 1
3.1.1 Installing Procedure.....	3- 1
3.1.2 Installing Operation.....	3- 2
3.2 Uninstallation	3- 8
3.2.1 Uninstalling Procedure	3- 8
3.2.2 Uninstalling Operation	3- 9
3.2.3 If you have lost the license key FD of the old product and cannot perform uninstallation.....	3-13
4. USING THE OPERATING MANUALS (PDF DATA)	4- 1 to 4- 2
4.1 Operating Procedure	4- 1
4.1.1 Procedure for browsing the operating manual	4- 1
4.1.2 Operation for browsing the operating manual	4- 2
5. USING GPPW	5- 1 to 5- 6
5.1 GPPW Edit Window and Various Tools	5- 1
5.2 Dialog Box Basic Operations	5- 4
APPENDICES	Appendix-1 to Appendix-8
APPENDIX 1 Questions and Answers about Personal Computers	Appendix- 1
APPENDIX 2 Notes on GPPW	Appendix- 2
APPENDIX 3 How to Install GPPW after Copying It onto FDs.....	Appendix- 7

About Manuals

The following lists the manuals for this software package.
Refer to the following table when ordering manuals.

Related Manuals

Manual Name	Manual Number (Model Code)
GPP Function Software for Windows SW4D5C-GPPW-E(V) Operating Manual Describes the online functions of SW4D5C-GPPW-E(V) including the programming procedure, printing out procedure, monitoring procedure, and debugging procedure. (Packed with the product.)	SH-080032 (13J963)
Ladder Logic Test Function Software for Windows SW4D5C-LLT-E(V) Operating Manual. This manual gives a product summary, device memory monitoring and setting / operating methods for machine simulation (Sold separately.)	SH-080034 (13J965)
GPP Function Software for Windows SW4D5C-GPPW-E(V) SW4D5C-LLT-E(V) Starting GPPW(Guidebook) This manual is intended for beginners of the SW4D5C-GPPW-E(V), SW4D5C-LLT-E(V) . It describes how to install and start them and provides you with a basic knowledge and the methods for creating and editing circuits, making printouts, monitoring, and debugging showing a few illustrations.(Sold separately.)	IB-0800057 (13J966)
GPP Function Software for Windows SW4D5C-GPPW-E(V) Operating Manual (SFC) Describes the functions of SW4D5C-GPPW-E(V) including the programming procedure and printing out procedure.	SH-080033 (13J964)

Note: The manuals other than the Guidebook are contained on the CD-ROM with the corresponding software packages as sets.

Any of the manuals is available separately in printed form. Please indicate its manual number (model code) in the above list.

NOTICES
<ul style="list-style-type: none"> • We don't guarantee the commercially-available Windows-based software products that have been introduced in this manual. • We hold the copyrights of this software package. • No part of this manual may be transcribed or duplicated in any form without prior permission by Mitsubishi Electric Corporation. • We have attempted to cover all the revisions of software and hardware, but this manual may not contain the latest revisions. • We assume that one software package will be used on single machine. • We permit the user to use this software package (including this manual) based on the Software License Agreement. • We are not liable for consequences or influences due to this software package (including this manual). • The specifications of this software package and the descriptions in this manual may be altered in future without prior notice.

Abbreviations and Terms in This Manual

Unless otherwise stated, this manual uses the following abbreviations and terms.

Generic Term/Abbreviation	Description
Windows	Abbreviation for Microsoft Windows 95 or Windows NT 4.0
SW4D5C-GPPW-E	Abbreviation for SW4D5C-GPPW-E(V) GPP Function Software Package
GPPW	Abbreviation for SW4D5C-GPPW-E(V) GPP Function Software Package
SW4D5C-LLT-E	Abbreviation for SW4D5C-LLT-E(V) Ladder Logic Test Tool Function Software Package
Logic test function (LLT)	Abbreviation for SW4D5C-LLT-E(V) Ladder Logic Test Tool Function Software Package
License key FD	Generic term for SW4D5F-GPPKEY-E and SW4D5F-LLTKEY-E

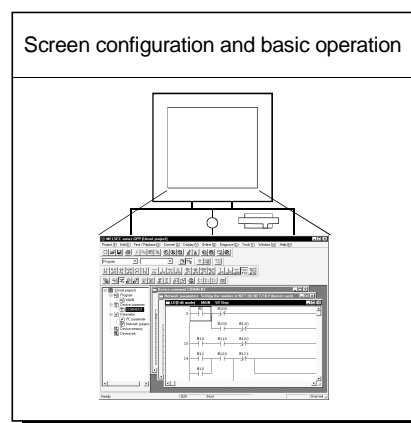
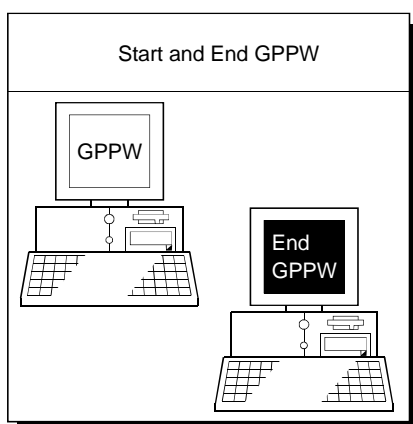
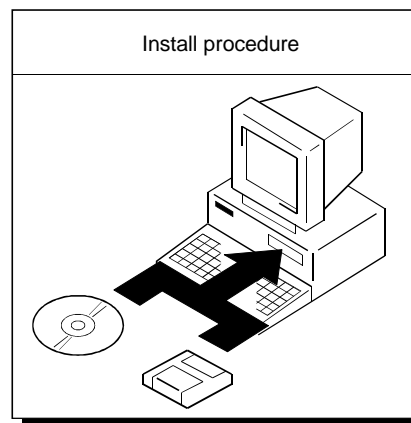
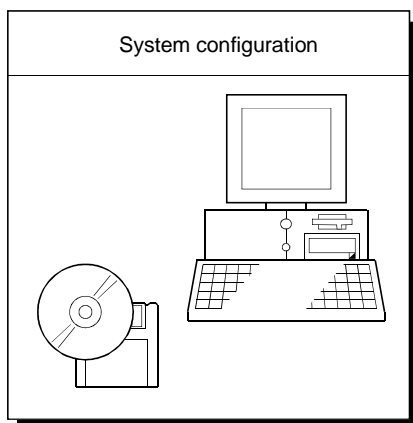
1. GENERAL DESCRIPTION

This manual describes the system configuration, installation procedure, start method, screen configuration, and basic operations of the following Windows compatible products.

- SW4D5C-GPPW-E GPP Function Software Package (CD-ROM Version)
- SW4D5C-LLT-E Ladder Logic Test Tool Function Software Package (CD-ROM Version)

The following products are designed specifically for the user of the old version to update it.

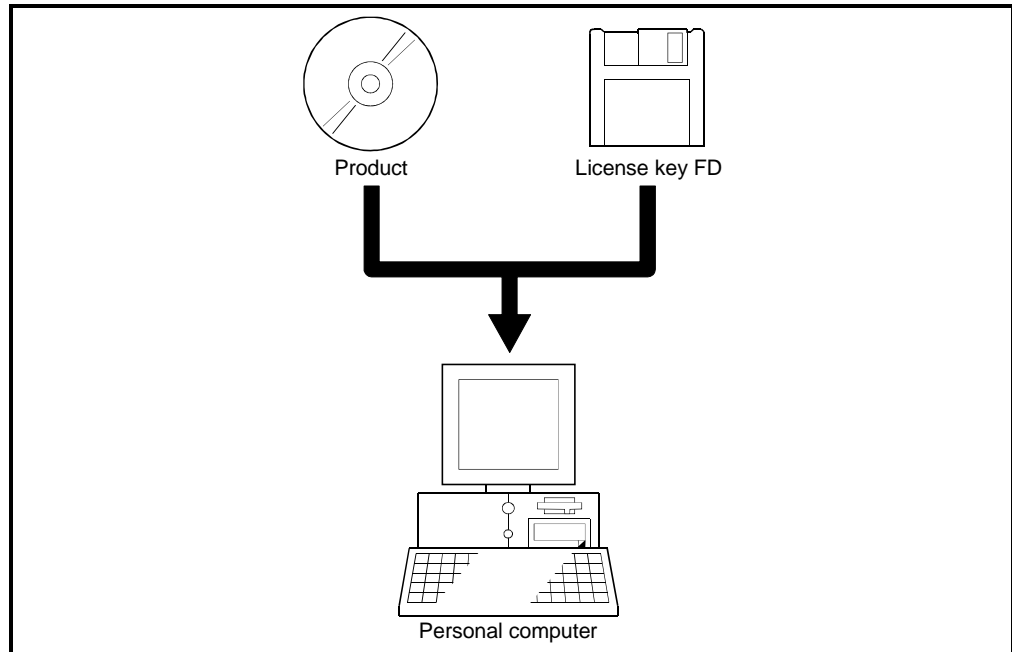
- SW4D5C-GPPW-EV GPP Function Software Package (CD-ROM Version)
- SW4D5C-LLT-EV Ladder Logic Test Tool Function Software Package (CD-ROM Version)



2. SYSTEM CONFIGURATION

2.1 System Configuration

The following figure shows the system configuration.



*The SW4D5C-GPPW-E(V) GPP Function Software Package consists of

Product: CD-ROM of SW4D5C-GPPW-E(V)

License key FD: FD of SW4D5F-GPPKEY-E

POINT

- (1) Simultaneous use of this product on two or more personal computers is illegal. Therefore, you cannot use this product on any other personal computer than the one specified in the software registration card.
However, the license key FD is designed to be installable up to five times to prepare for the unexpected (refer to Q8 to Q18 in Appendix 2), e.g. the hard disk of the personal computer is broken.
5 license right product: Can be installed up to 25 times.
10 license right product: Can be installed up to 50 times.
Note: One license key FD may be installed up to five times.
When you use this product on another personal computer, uninstalling the license key FD returns you one installation right.
- (2) By installing the license key FD, you can start the product.
(Refer to Section 3.1.)
- (3) Take charge of the license key FD so that you can identify the personal computer where it was installed, and store the FD carefully.
If you lost the license key FD or the license key FD does not match the personal computer on which it was installed, you cannot install or uninstall the product.

2.2 Operating Environment

The following table summarizes the operating environment.

Item	Contents
Computer main unit	Pentium (133 MHz or faster recommended) based personal computers that are compatible with Windows operating system
Operating system	Windows95/Windows98 or WindowsNT Workstation 4.0
Required memory	32MB or more (recommendation)
Required hard disk space	50MB or more
Disk drive	3.5inch (1.44MB) floppy disk drive required CD-ROM drive (if using CD-ROM media)
Monitor	Resolution 800x600 pixels or higher

POINT

- 3.5 inch (1.44MB) floppy disk drive is required to install the license key FD.
- Instruction for use of the online manual
Addition of memory ensures more comfortable use.
- Instruction for use of the PDF data
Use with addition of personal computer memory ensures comfortable operation.

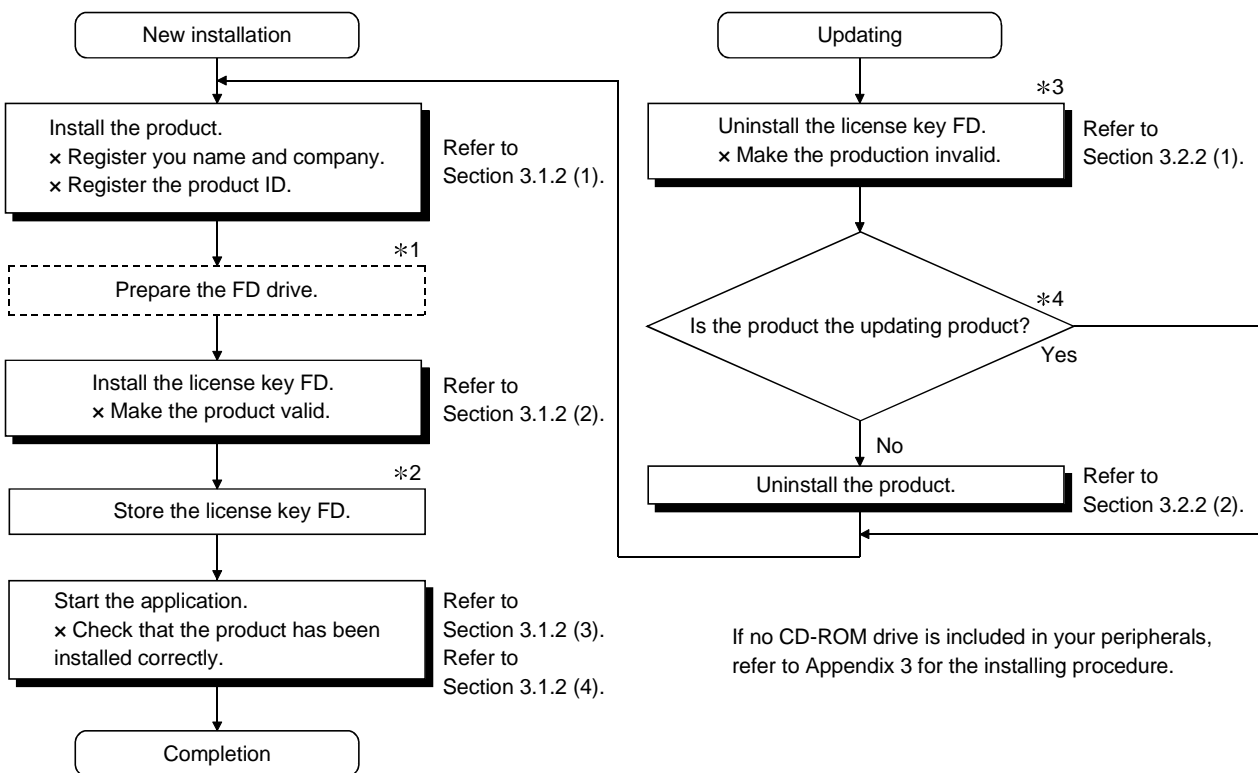
3. INSTALLATION AND UNINSTALLATION

This chapter explains how to install and uninstall the product.

3.1 Installation

3.1.1 Installing Procedure

Install any of GPPW, logic test function (LLT) in the following procedure.



POINT

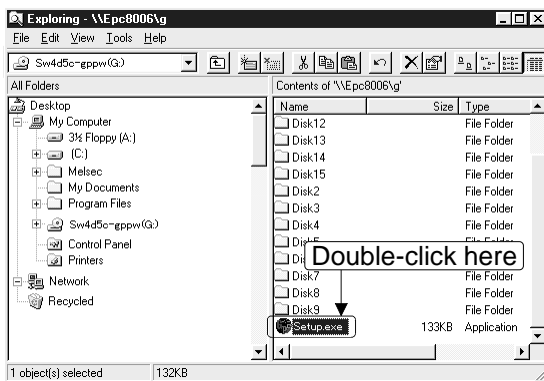
- *1: When your personal computer is a notebook which is used by changing between a CD-ROM drive and an FD drive, change the drive after completion of application installation. Even after the personal computer has been powered off, you can install the license key FD.
- *2: Take charge of the license key FD so that you can identify the personal computer where it was installed, and store the FD carefully. If you lost the license key FD or the license key FD does not match the personal computer on which it was installed, you cannot install or uninstall the product. Refer to Section 3.2.3
- *3: Use the license key FD which was used to install the product.
- *4: Install the updating product in the personal computer which contains the product of the old version.

3.1.2 Installing Operation

Before starting installation, confirm the following.

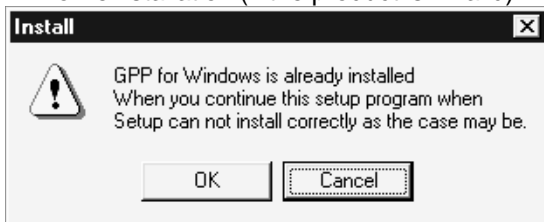
POINT
<ul style="list-style-type: none"> • Terminate all the other applications running under Windows before installation. • When using Windows NT4.0, log on as a user with the administrator attributes (for computer administration). • When installing the logic test function (LLT), install GPPW first.

(1) Installing the product (This installation assumes that of GPPW.)



1) Start Explorer and click the drive in which the disk has been inserted. Double-click "setup.exe". On Explorer, choose [Start]-[Programs]-[Windows Explorer].

For reinstallation (if the product is invalid)



If the left message appears, click **Cancel**, uninstall the product, and then reinstall it.

For reinstallation (if the product is valid)



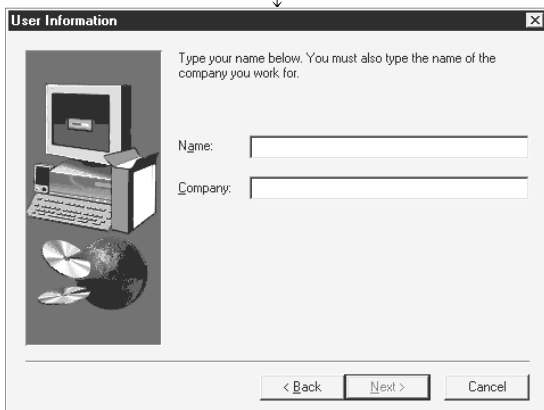
If the left message appears, recover the license using the license key FD, and then install the product. If you have lost the license key FD, refer to Section 3.2.3.

For updating product

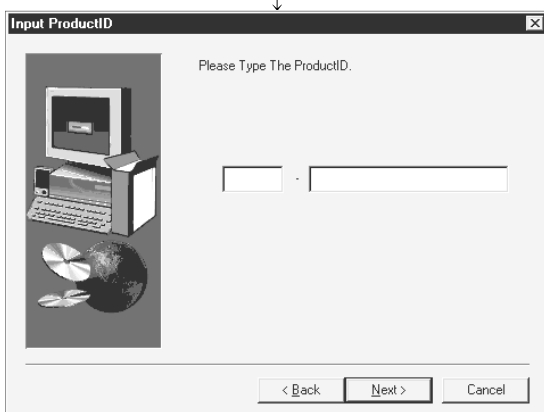


If the left message appears, always install the updating product in the personal computer which contains the old version product.

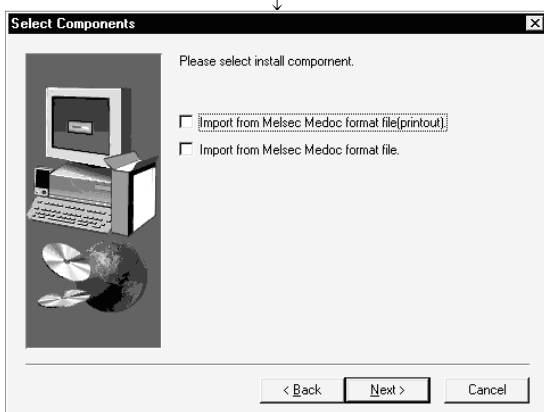
(From the preceding page)



2) Enter the name and company name, then click the **Next>** button.



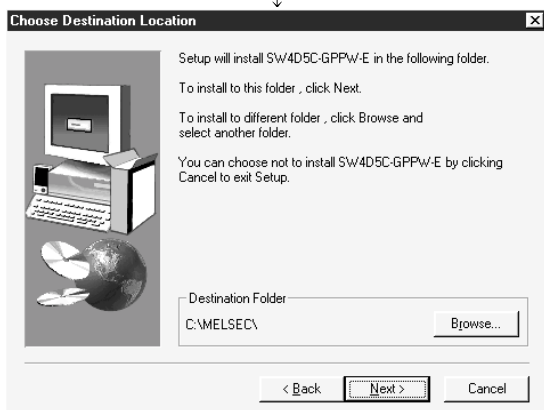
3) Enter the product ID and click the **Next>** button.
The product ID is printed on the Software User Registration card



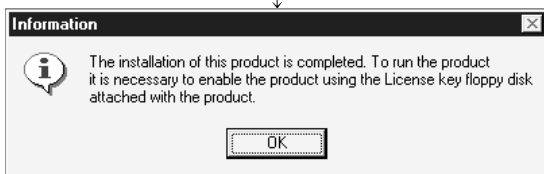
4) When you want to import to GPPW the data created with MELSEC MEDOC or the data output as a printout data file, check the check box and click **Next>**.

(To the next page)

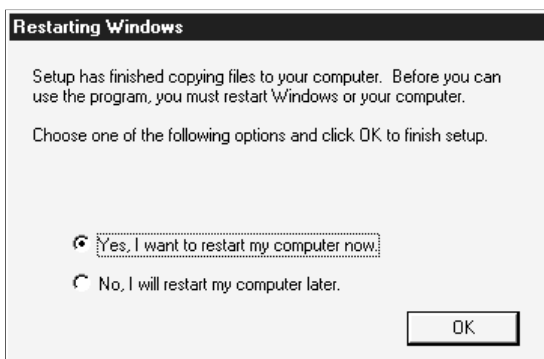
(From the preceding page)



- 5) Specify the installation Destination Folder. If the installation Destination Folder displayed is correct, click **Next>**. If you change the destination folder, click **Browse** and specify a new drive and folder.

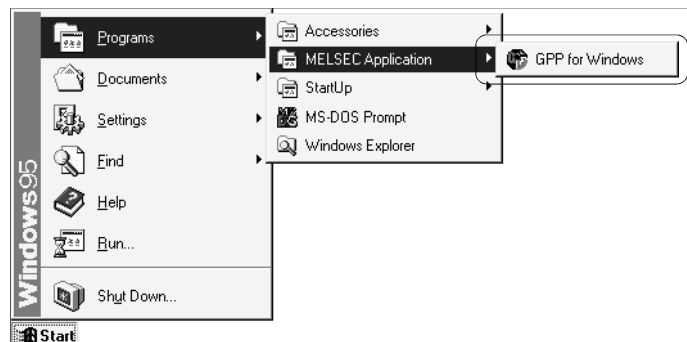


- 6) This completes the installation. Then, install the license key FD and make the product valid.



If the left screen appears, you must restart Windows.

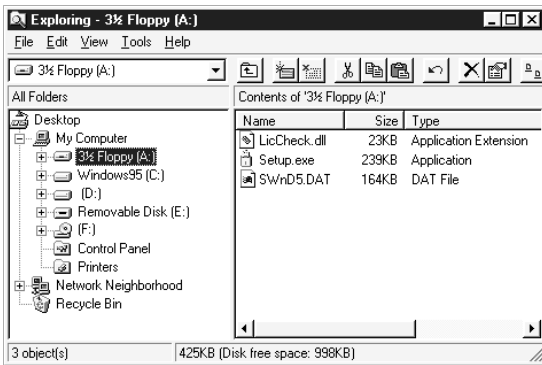
Installing GPPW registers the icons as shown below.



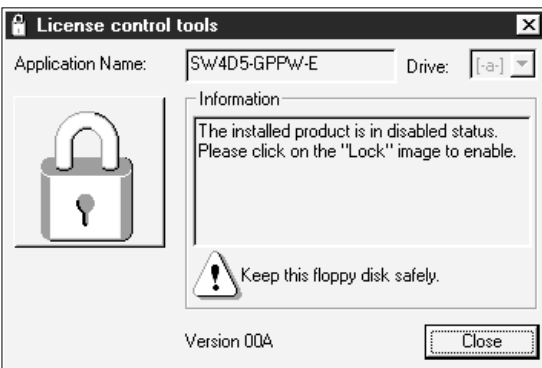
POINT

Because the logic test function (LLT) is always started from GPPW, icons are not registered from the LLT.

(2) Installing the license key FD



- 1) Start Explorer and click the drive in which the license key FD has been inserted. Double-click "setup.exe". On Explorer, choose [Start]-[Programs]-[Windows Explorer].

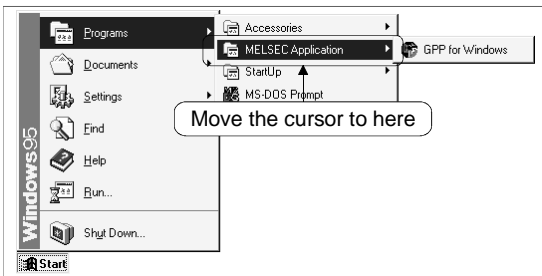


- 2) Click the key picture.

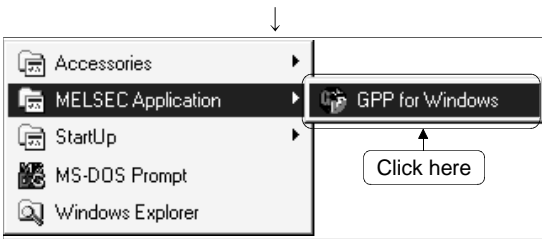


- 3) Click the **Close** button. In this status, you can start the application. Make sure that the application has started in (3) or (4).

(3) Confirming the start of GPPW



1) Click [Start] and move the cursor to the [Programs]-[MELSEC Application] menu.

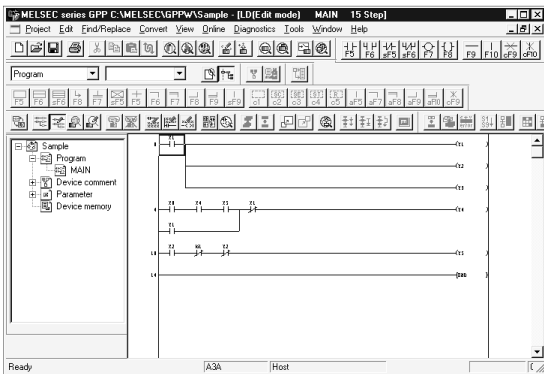


2) Click the [GPP for Windows] menu.

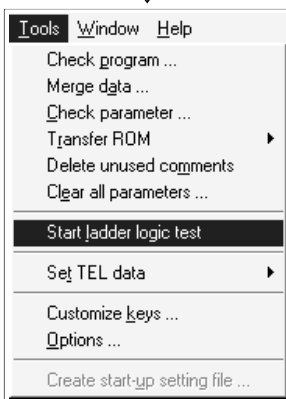


3) GPPW starts.
If the left screen appears, the product has been installed properly.

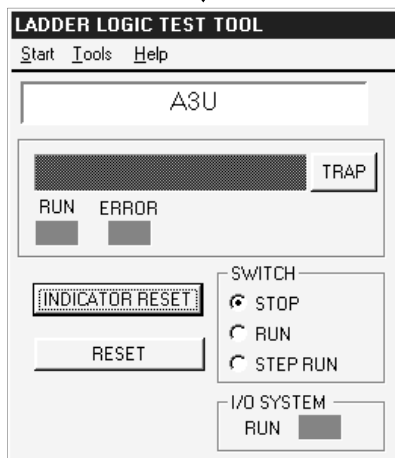
(4) Confirming the start of the logic test function (LLT)



- 1) Open the project to be debugged with GPPW.
Refer to the SWnD5C-GPPW-E Operating Manual.



- 2) Click the [Tools]-[Start ladder logic test] menu of GPPW.

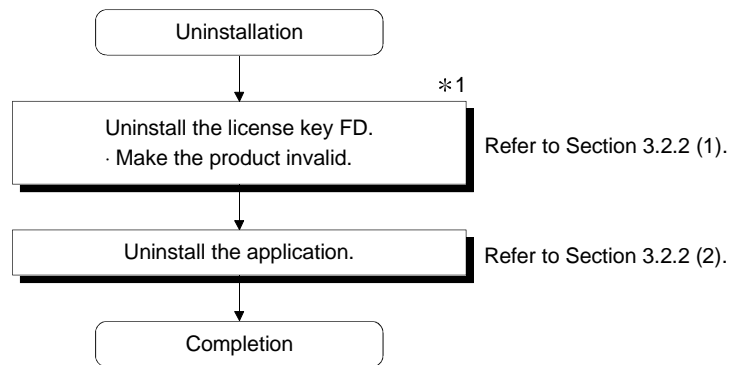


- 3) The logic test function (LLT) starts.
If the left screen appears, the product has been installed properly.

3.2 Uninstallation

This section describes the operation to remove the product from the hard disk.

3.2.1 Uninstalling Procedure

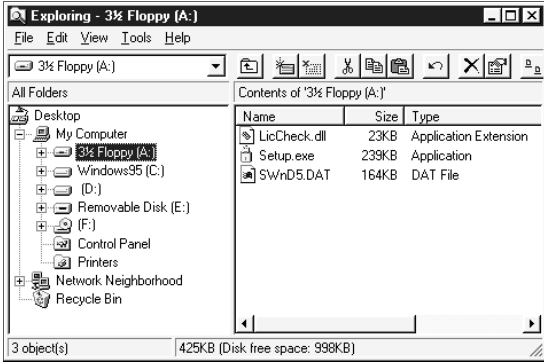


POINT

*1: Use the license key FD which was used to install the product.

3.2.2 Uninstalling Operation

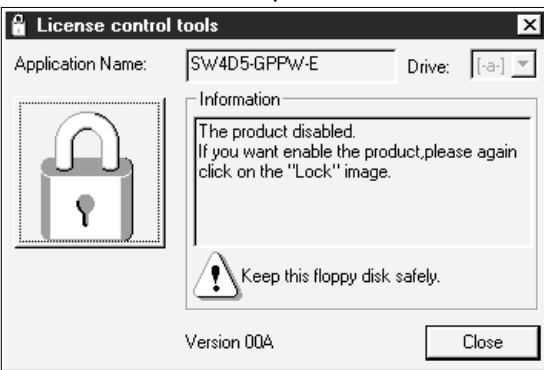
(1) Uninstalling the license key FD



- 1) Start Explorer and click the drive in which the license key FD has been inserted. Double-click "setup.exe". On Explorer, choose [Start]-[Programs]-[Windows Explorer].

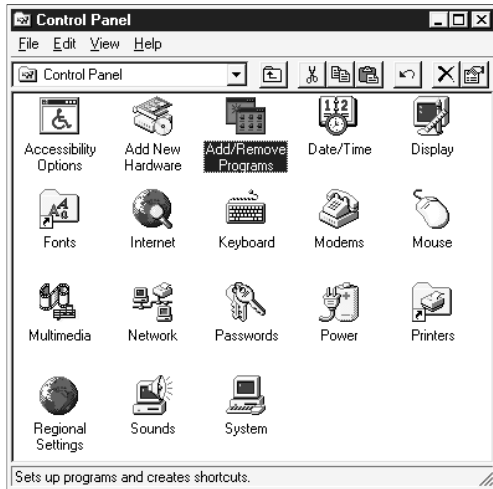


- 2) Click the key picture.

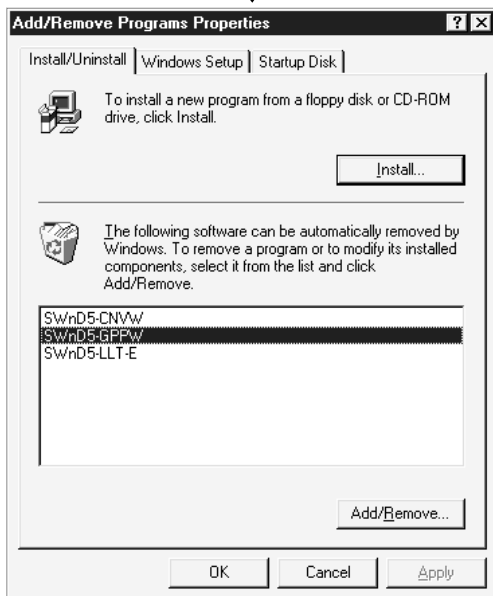


- 3) Click the **Close** button.
In this status, the product is invalid and you can perform the operation in (2) Uninstalling the product.

(2) Uninstalling the product

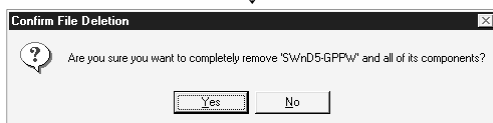


- 1) Choose and double-click "Add/Remove Programs" in the Control Panel.
On Control Panel, choose [Start]-[Settings]-[Control Panel].



- 2) Choose the software package to be deleted.
 - For GPPW-E
Choose "SWnD5-GPPW".
 - For logic test function (LLT)
Choose "SWnD5-LLT".
 After making selection, click **Add/Remove Programs**.

* Steps 3 and later are those for SWnD5-GPPW-E but perform the same operation also for SWnD5-LLT-E.



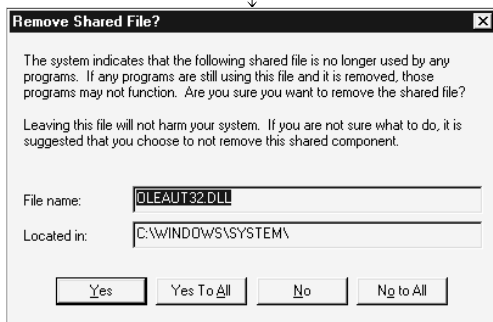
- 3) Check whether you will remove the software package or not.
When uninstalling it, click **Yes**.
Uninstallation starts.
When not uninstalling it, click **No**.
This returns to the preceding screen.

(To the next page)

- * Components indicate the icons and files installed.
If you do not make the license key FD invalid, the following dialog box appears.



(From the preceding page)



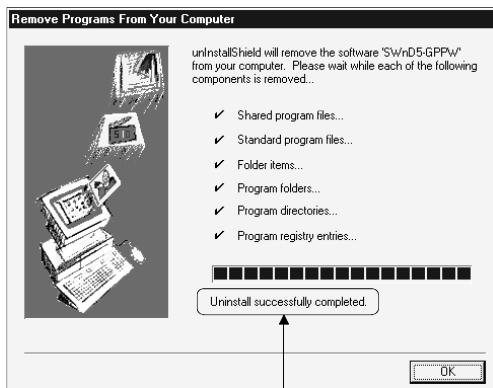
4) When this screen has appeared, click **No to All**.

The software package of only GPPW is removed.

POINT

Choosing **Yes** will remove the shared file of the Windows 95/98 or Windows NT Workstation 4.0-compatible MELSEC software package group. To remove only GPPW (or LLT), click **No to All**.

(To remove GPPW only, you need not change the file name and location.)



5) When the removal finished message appears, click **OK**.

* If the unremoved file alarm is given, open "Windows Explorer", check the files and remove unnecessary files. Note that if you remove necessary files accidentally, the other applications may not be started.

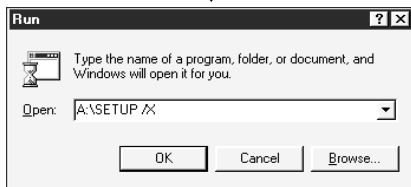
When the completion message appears, uninstallation is complete.

3.2.3 If you have lost the license key FD of the old product
and cannot perform uninstallation Uninstalling Operation

Make the product invalid in the following procedure if you have lost the license key FD or if the information of the registered product is corrupted. In that case, one installation right of the license key FD of the old product is lost. Refer to Section 2.1 for information on the handling and instructions for the license key FD.



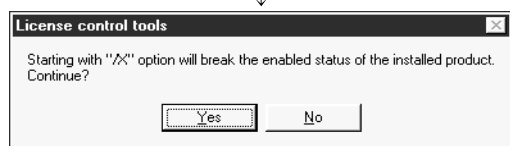
1) Insert a new license key FD into the floppy disk drive and choose [Start]-[Run].



2) Enter "A:\SETUP /X" and click the **OK** button.



3) Click the key of the license tool dialog box.



4) Clicking the **Yes** button abandons the valid status of the product.



5) Click the **Close** button.

6) Refer to Section 3.1.2 (1) to (3) and perform installation.

4. USING THE OPERATING MANUALS (PDF DATA)

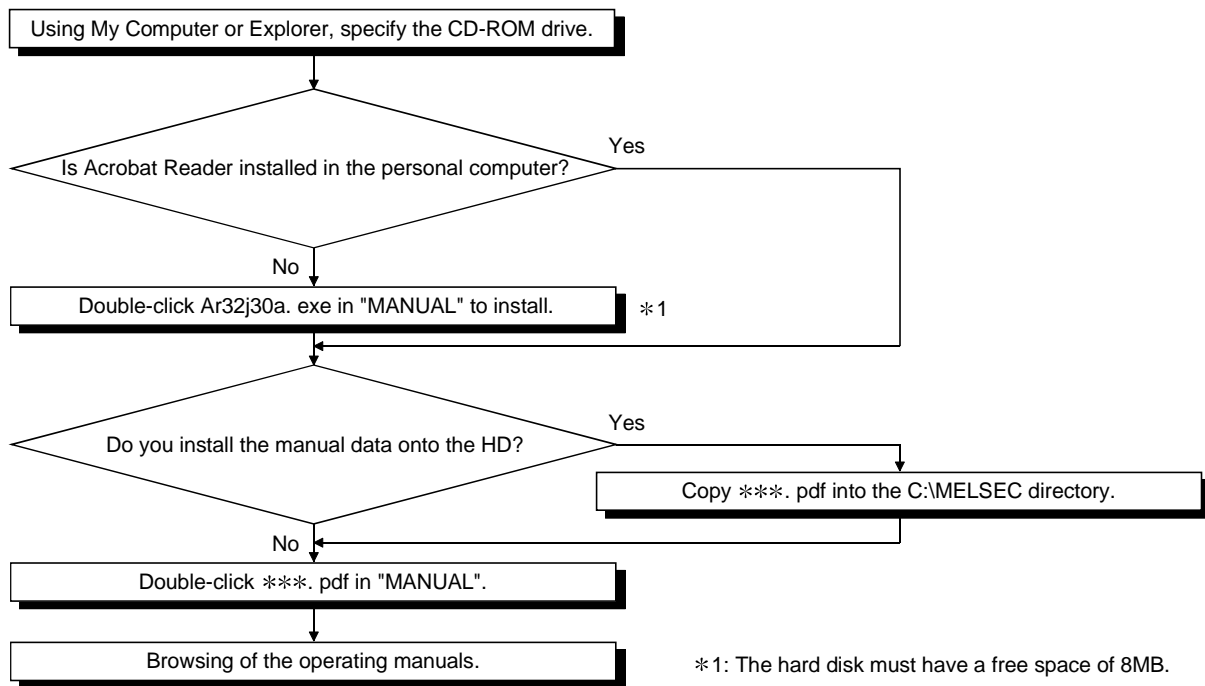
The operating manuals are contained on the CD-ROM which includes the MELSEC software package products.

The operating manuals may either be used by reading them directly from the CD-ROM or by installing them on the HD. (They can be used at the user's option.)

The manuals are in the form of PDF data which can be viewed using Acrobat Reader of Adobe Systems, Inc.

4.1 Operating Procedure

4.1.1 Procedure for browsing the operating manuals



PDF data file list

For SW4D5C-GPPW-E

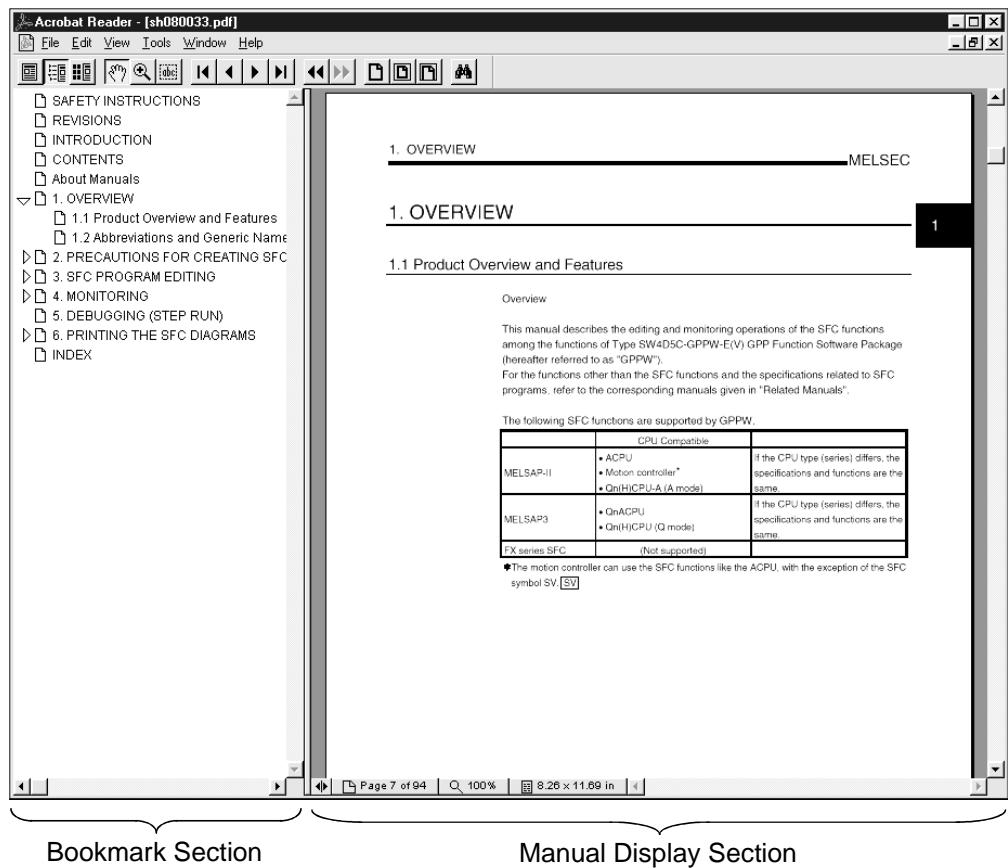
- Manual
 - read me. txt (Describes the files in the manual folder.)
 - acrobat
 - setup. exe (Application required to view the PDF data.)
 - plcd308h. pdf (Lists the personal computers and others which have been confirmed to be operable.)
 - s080032a. pdf
(GPP Function Software for Windows SW4D5C-GPPW-E(V) Operating Manual)
 - s080033a. pdf
(GPP Function Software for Windows SW4D5C-GPPW-E(V) Operating Manual SFC)

For SW4D5C-LLT-E

- Manual
 - read me. txt (Describes the files in the manual folder.)
 - acrobat
 - setup. exe (Application required to view the PDF data.)
 - plcd308h. pdf (Lists the personal computers and others which have been confirmed to be operable.)
 - s080034a. pdf
(Ladder Logic Test Tool Function Software for Windows SW4D5C-LLT-E(V) Operating Manual)

4.1.2 Operation for browsing the operating manual

The following screen is used to brow any operating manual.

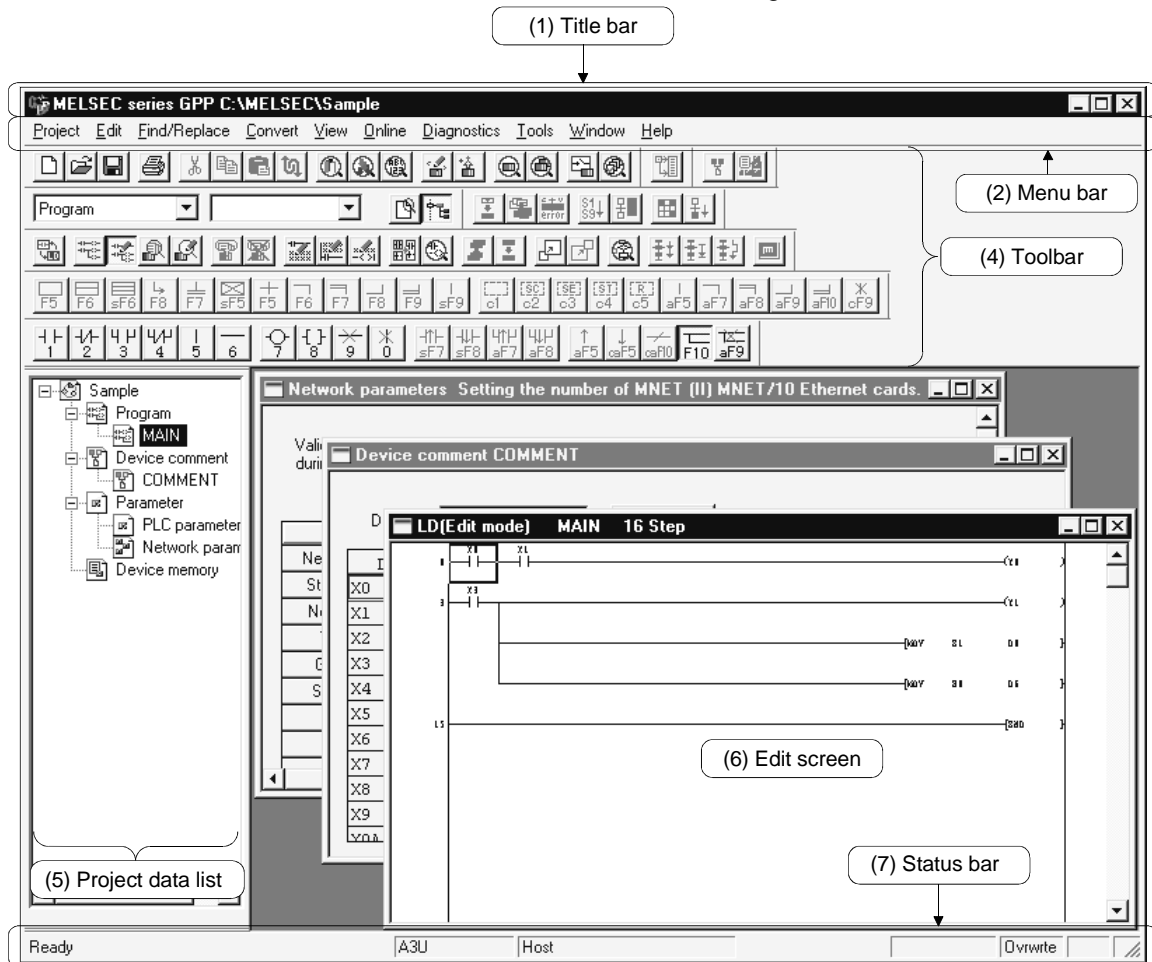


Clicking any contents item in the "bookmark section" with the mouse changes the screen in the "manual display section".

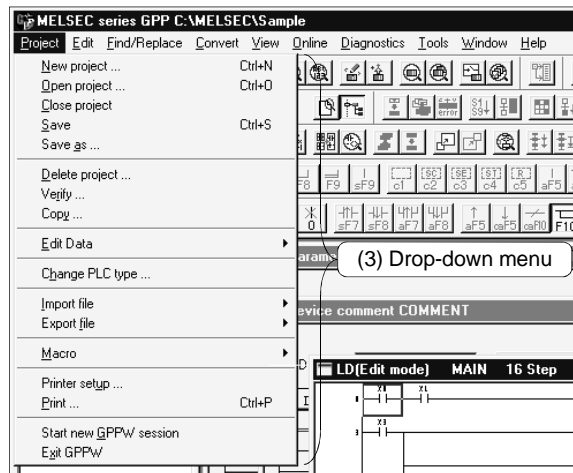
5. USING GPPW

5.1 GPPW Edit Window and Various Tools

This section describes the GPPW window configuration and various tools.

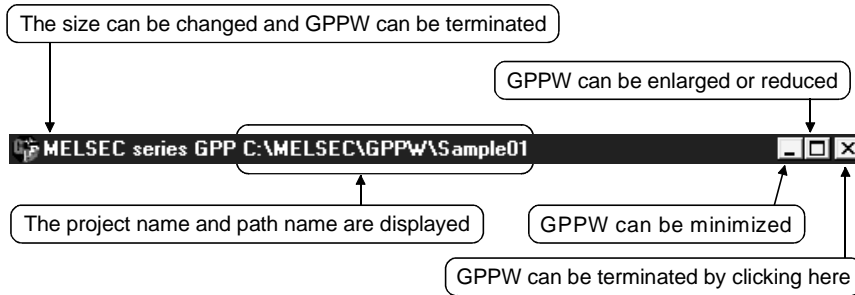


5



(1) Title bar

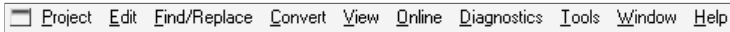
Indicates the name of the open project



(2) Menu bar

Displays the names of GPPW menus.

If a desired menu is selected, the drop-down menu is displayed so that various functions can be used.

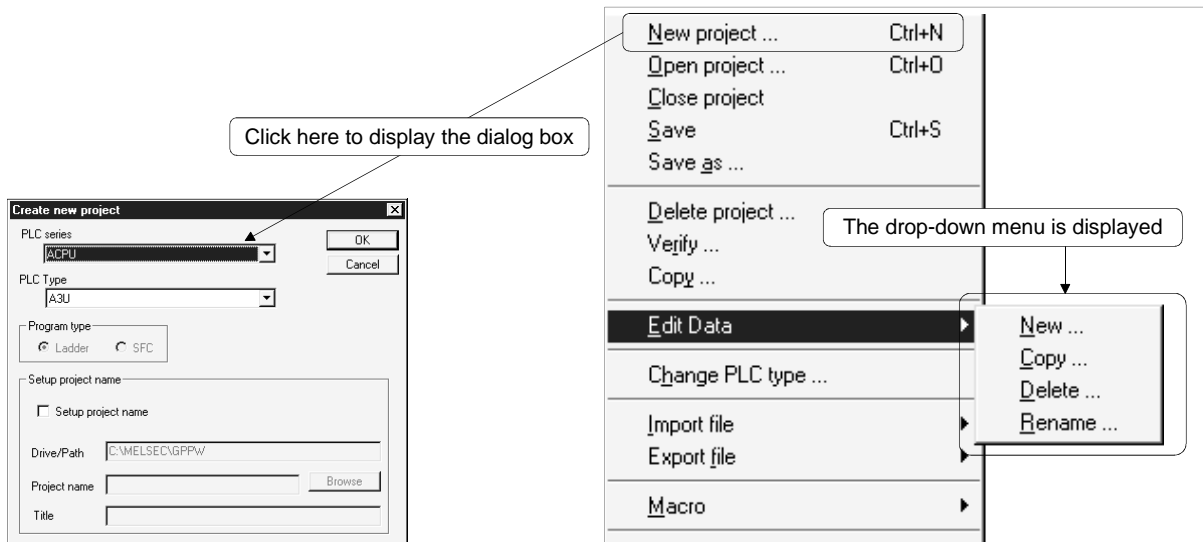


(3) Drop-down menu

Displays the names of GPPW functions.

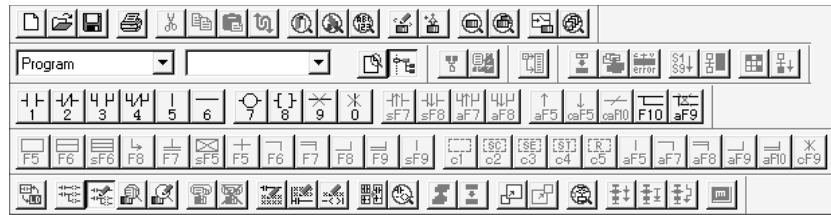
When "▶" is displayed at the rightmost end of the menu item, the drop-down menu of the selected item is displayed.

When "..." is displayed next to a function name, a setup dialog box is displayed by selecting the item.



(4) Toolbar

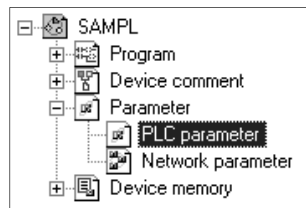
Displays the buttons for the frequently used functions assigned on the menu bar.



(5) Project data list

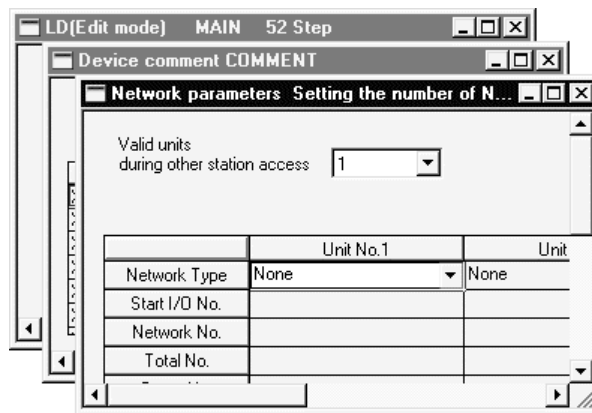
Lists project data by class.

The circuit creation dialog box and other dialog boxes can be directly called.



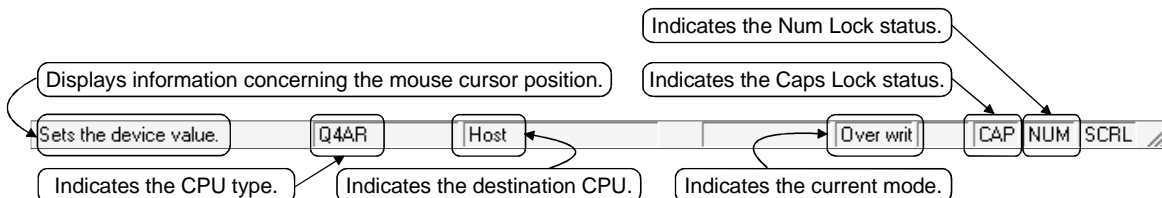
(6) Edit window

Displays the circuit creation dialog box and comment creation dialog box to make settings for circuits, comments, and parameters.

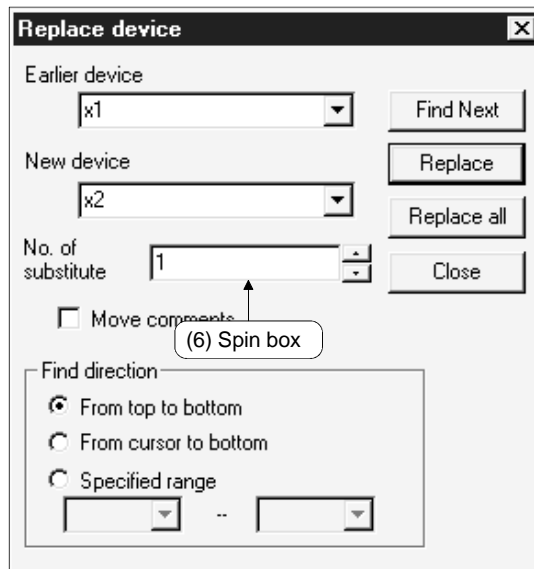
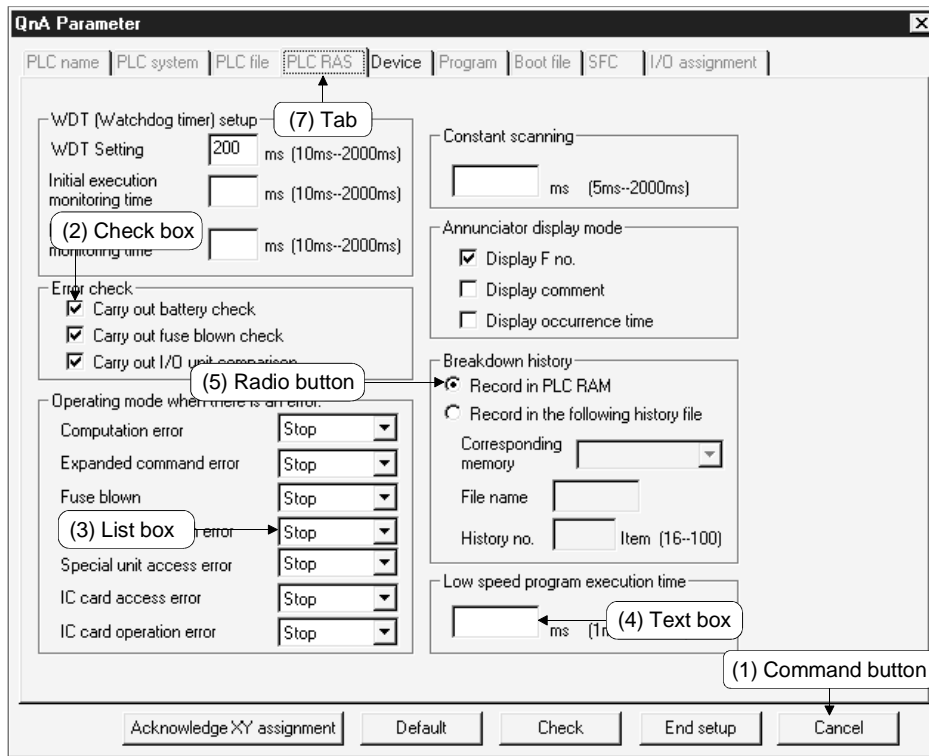


(7) Status bar

Displays the GPPW status information.



5.2 Dialog Box Basic Operations



(1) Command button

Buttons such as and .

Click the button to execute the item.

(2) Check box

Click a checkbox to select and execute an item.

(3) List box

Click to drop-down the list of the items, then click a desired item to select.

(4) Text box

Enter characters with the keyboard.

The text box may permit only numeric values or letters.

(5) Radio button

Click for the item to be selected.

(6) Spin box

Spin boxes may permit direct value input or selection of a value by clicking .

When inputting a value directly, click and enter a numeric value with the keyboard.

When clicking for selecting a value, clicking increments the value and clicking decrements the value.

(7) Tab

For tab switching, click the desired tab in the property pages dialog box.

APPENDICES

APPENDIX 1 Questions and Answers about Personal Computers

This section provides basic information in question & answer style for quick reference.

Q1. What happens when the monitor with a resolution of 800x600 pixels or lower is used?

A1. The icon near the edges of the screen may not be displayed entirely, so that the operations cannot be performed using that icon.
Read the manual and set the dedicated resolution high enough to display the entire icon.

Q2. What is the operating environment?

A2. The operating environment refers to a combination of the hardware and operating system (Window95/Windows98 or Windows NT Workstation4.0) that makes maximum use of the GPP function software package.
(Basically, the GPP function software package can be used so long as the operating environment specifications listed in the manual are satisfied.)

Q3. Is the GPP software package available under Windows 3.1?

A3. The GPP software package is not available under Windows 3.1.

Q4. What happens when the CPU is Pentium 133MHz or slower?

A4. When the clock speed of the CPU is slower than 133MHz, it takes longer for operations such as screen display.

APPENDIX 2 Notes on GPPW

This section lists the questions and answers to assist you in solving the problems encountered during GPPW operation.

Q1. Each circuit diagram is enclosed in white lines during circuit editing depending on the type of video card installed in the personal computer (card storing the characters, figures, and pictures to be displayed on the monitor as data). How can these white lines be deleted?

A1. Make necessary settings from the Windows95 "Control Panel".

Operating procedure

(1) Open "Control Panel".



(2) Open "System".



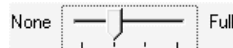
(3) Click the "Performance" tab.



(4) Click the "Graphics" button.



(5) Set "Hardware acceleration" to the entry (second entry) next to "None".



Q2. What action should be taken for the message "Can not allocate Share memory" or "Initialization failed" displayed at the start of the GPP software package?

A2. Restart the GPP function software package or restart Windows 95 and start the GPP function software package again.

Q3. Why does it take time to change screen after starting setup.exe on page 3-2?

A3. It takes time when the memory-resident program (such as Virus checker) is running.

Q4. Which method is recommended in upgrading the existing GPP function software package (overwriting the existing software package or uninstalling the existing package and installing the new software package)?

A4. Uninstall the existing GPP function software package, then install the new package.

However, do not uninstall the existing software package if you will install the updating product.

It cannot be installed unless the application of the old version has been installed.

- Q5 What points are to be noted in installing PC-cilling (commercially available software package) on the personal computer.
- A5 (a) At the start of PC-cilling
Because it takes time for initialization at the start of PC-cilling, other applications in "StartUp" group may not be started.
In addition, it may take time to accept the subsequent operations after storage into the task tray.
These phenomena vary depending on the specifications of the operating environment (CPU, memory, etc.).
It is well known that this problem occurs frequently when the CPU is Pentium 100 MHz or lower.
- (b) Effects on the system
When PC-cilling is already started, system load increases because PC-cilling checks the files.
For this reason, it may take extra time for starting the application depending on the operating environment.
These phenomena vary depending on the operating environment specifications (CPU, memory, etc.).
It is well known that this problem occurs frequently when the CPU is Pentium 100 MHz or lower.
- (c) Effects on applications
When applications cannot be started or run normally after PC-cilling has been installed, check the operations of the applications according to the following procedure:
- 1) Uninstall PC-cilling and restart the system to check the operations of the applications.
If the same problem recurs, the cause of the problem is not PC-cilling.
In such a case, contact our application support engineers.
 - 2) When the applications run normally after PC-cilling has been uninstalled, install PC-cilling again and change the monitor setting to "Custom Monitor." In addition, change the selection of the checkboxes for Extension Designation or Monitor Function.
- * When the system does not work well after the step 1) has been performed, install Windows 95 and/or applications again.
- Q6. Can the application (SW0D5C-GPPW-E, SW0D5C-LLT-E, etc.) run on the Windows NT 4.0 Workstation?
- A6. SW05C-GPPW-E and SW0D5C-LLT-E operations are not guaranteed. Be sure to use SW1D5C-GPPW-E, SW1D5C-LLT-E and the subsequent version.

- Q7. When a program is read from a floppy disk, it cannot be read from the floppy disk so long as the disk is write protected. Why not?
- A7. Because multiple GPPWs can be started, access to files in the same floppy disk may occur simultaneously. In such a case, an access flag is written to a floppy disk at the time of floppy disk access to prevent the files in the disk from being accessed from another GPPW.
Namely, no files can be read in this system so long as the floppy disk is write protected.
- Q8. What should I do if the personal computer or hard disk is broken?
- A8. 1) Insert the license key FD of GPPW and uninstall it (make the product invalid). You will get your installation right back.
Then, restore the personal computer, hard disk, Windows and so on to normal, and reinstall the FD in the same way as when you purchased.
- 2) If the personal computer or hard disk is broken so seriously that it cannot be restored in the above method 1), use the spare license.
Restore the personal computer, hard disk, Windows and so on to normal, and reinstall the FD in the same way as when you purchased.
To prepare for the unexpected, the license key FD is designed to be installable up to five times.
- Q9. If Windows is corrupted, what should I do?
- A9. Do as described in A8.
- Q10. If the personal computer went wrong, what should I do to format it?
- A10. Do as described in A8.
- Q11. What should I do if I formatted the personal computer?
- A11. Do as described in A8, 2).
- Q12. What should I do if I accidentally erased the software such as GPPW?
- A12. Do as described in A8.

- Q13. If GPPW went wrong (some of the files were lost), what should I do?
- A13. Do as described in A8.
- Q14. What should I do if the license key FD is corrupted?
- A14. Please contact your sales representative.
- Q15. What should I do if I lost the CD-ROM/FD product and/or license key FD?
- A15. We are sorry to tell you to please purchase them newly.
- Q16. What should I do if I am forced to change the personal computer where GPPW is used due to its renting or leasing expiration or the like.
- A16. 1) Insert the license key FD of GPPW into the personal computer whose renting or leasing will expire and uninstall it (make the product invalid). You will get your installation right back. Then, reinstall the FD into the new personal computer in the same way as when you purchased.
- 2) If you have already returned the personal computer whose renting or leasing will expire, use the spare license. The installation procedure is the same as when you purchased.
To prepare for the unexpected, the license key FD is designed to be installable up to five times.
- Q17. I bought a new personal computer and want to use GPPW on the new one. What should I do?
- A17. 1) Insert the license key FD of GPPW into the old personal computer and uninstall it (make the product invalid). You will get your installation right back. Then, reinstall the FD into the new personal computer in the same way as when you purchased.
- 2) If you do not already have the old personal computer, use the spare license. The installation procedure is the same as when you purchased.
To prepare for the unexpected, the license key FD is designed to be installable up to five times.

Q18. I bought new Windows and want to change the old one for the new. What should I do?

- A18. 1) To install new Windows over the old, exchange them as they are.
- 2) To install new Windows newly or install it after formatting the hard disk, insert the license key FD of GPPW into the personal computer and uninstall it (make the product invalid).
You will get your installation right back.
Then, format the personal computer, install new Windows, and reinstall the license key FD in the same way as when you purchased.
- 3) If you have already formatted the personal computer to change the old Windows for the new, use the spare license.
The installation procedure is the same as when you purchased.
To prepare for the unexpected, the license key FD is designed to be installable up to five times.

APPENDIX 3 How to Install GPPW after Copying It onto FDs

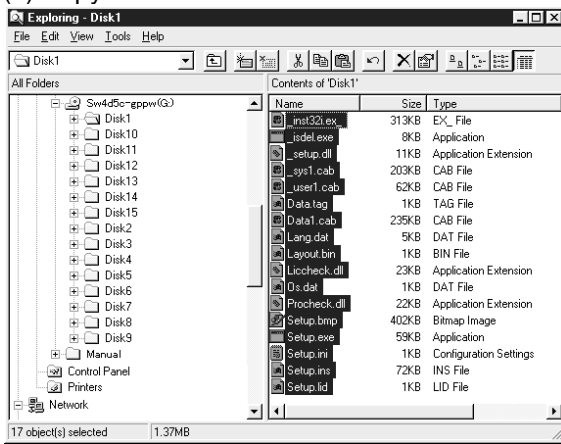
This section explains how to install GPPW when no CD-ROM drive is included in your peripherals.

(1) Preparations before copying

- Have formatted FDs (14 pcs.) on hand.
- Start Explorer.
Start from [Start]-[Program]-[Windows Explorer].



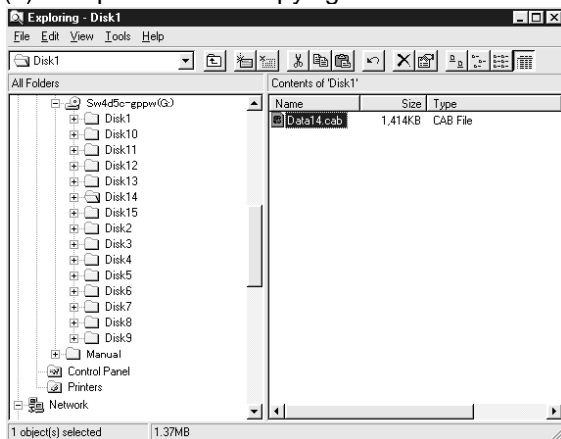
(2) Copy files onto FDs.



- 1) Choose the drive in which SW4D5C-GPPW-E has been placed.
Then choose all files on Disk 1 of SW4D5C-GPPW-E and copy them onto an FD.
When Disk 1 copying is complete, copy the files on Disk 2 to Disk 14 in the same method.
Since Setup.exe for FD is included in Disk 1, it need not be copied.



(3) Completion of file copying



- 2) After completion of file copying onto the FDs, insert the FDs (GPPW copied) into the corresponding peripheral to install GPPW.
Install GPPW in due FD order, starting with the one where Disk 1 was copied.

Refer to Section 3.1.2 for the installing operation.

**GPP Function software for Windows SW4D5C-GPPW-E(V),
Ladder Logic Test Function software for Windows SW4D5C-LLT-E(V)
Operating Manual(Startup)**