

MITSUBISHI ELECTRIC

GOT2000 Series
Protective Cover for Oil
for GT27/GT25/GT23

User's Manual

GT20-15PCO
GT20-12PCO
GT20-10PCO
GT20-08PCO
GT25-05PCO

Thank you for purchasing the GOT2000 Series.

Prior to use, please read both this manual and detailed manual thoroughly to fully understand the product.

MODEL	GT20/GT25-PCO-U-JE
MODEL CODE	1D7MH8
IB(NA)-0800498-C(1504)MEE	

GOT2000

SAFETY PRECAUTIONS
 (Always read these precautions before using this equipment.)

Before using this product, please read this manual and the relevant manuals introduced in this manual carefully and pay full attention to safety to handle the product correctly. The precautions given in this manual are concerned with this product. In this manual, the safety precautions are ranked as "WARNING" and "CAUTION".

WARNING Indicates that incorrect handling may cause hazardous conditions, resulting in death or severe injury.

CAUTION Indicates that incorrect handling may cause hazardous conditions, resulting in medium or slight personal injury or physical damage.

Note that the CAUTION level may lead to a serious accident according to the circumstances. Always follow the precautions of both levels because they are important to personal safety. Please save this manual to make it accessible when required and always forward it to the end user.

[INSTALLATION PRECAUTIONS]

WARNING

- Be sure to shut off all phases of the external power supply used by the system before mounting or removing the GOT main unit to/from the panel. Not doing so can cause the unit to fail or malfunction.

CAUTION

- When mounting the GOT to the control panel, tighten the mounting screws in the specified torque range. Undertightening can cause the GOT to drop, short circuit or malfunction. Overtightening can cause a drop, short circuit or malfunction due to the damage of the screws or the GOT.

4. INSTALLATION AND REMOVAL PROCEDURE

POINT

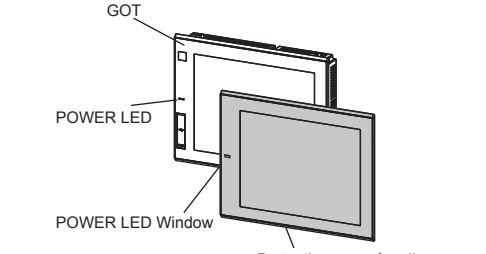
For attaching the protective cover for oil to the GOT already mounted on the control panel, follow the procedures as below.

- Remove the GOT from the control panel. Make sure to externally shut off all phases of the power supply and remove all cables from the GOT in advance.
- Clean dirt off surfaces of the GOT and control panel.

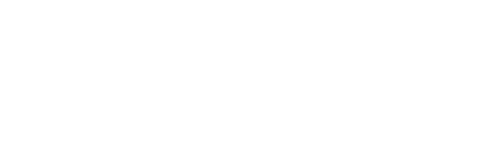
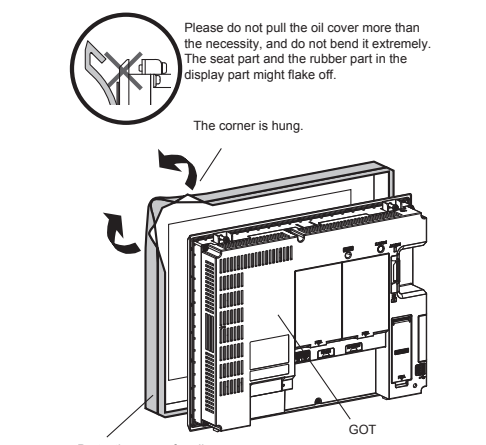
4.1 install the protective cover

For attaching the protective cover for oil, refer to the example of the GT2712.

1) Position the POWER LED frame of the cover to the POWER LED on the GOT front face, and the direction of the cover is decided



2) One corner of the cover is pulled outside, and it hangs it on the corner of the front panel of GOT.



[STARTUP AND MAINTENANCE PRECAUTIONS]

WARNING

- Daily check the protective cover for oil with eyes. When you find extreme dirt or scratches on the surface, immediately replace it with new one. Using the protective cover for oil with decreased visibility may cause malfunction.

[DISPOSAL PRECAUTIONS]

CAUTION

- Dispose of this product as industrial waste.

[TRANSPORTATION PRECAUTIONS]

CAUTION

- When fumigants that contain halogen materials such as fluorine, chlorine, bromine, and iodine are used for disinfecting and protecting wooden packaging from insects, they cause malfunction when entering our products. Please take necessary precautions to ensure that remaining materials from fumigant do not enter our products, or treat packaging with methods other than fumigation (heat method). Additionally, disinfect and protect wood from insects before packing products.

Manuals

The following shows manuals relevant to this product.

Manual name	Manual number (Model code)
GOT2000 Series User's Manual (Hardware) (Sold separately)	SH-081194ENG (1D7MJ5)

For detailed manuals, refer to the PDF manuals stored in the DVD-ROM for the drawing software used.

Relevant Manuals

For relevant manuals, refer to the Help or the .PDF manuals stored in the DVD-ROM for the drawing software used.

The latest manuals are also available from MITSUBISHI ELECTRIC FA Global Website (<http://www.MitsubishiElectric.co.jp/fa/>).

© 2013 MITSUBISHI ELECTRIC CORPORATION

Packing List

After unpacking the box, check that the following products are included.

Model	Product	Quantity
GT20-15PCO GT20-12PCO GT20-10PCO GT20-08PCO	GOT 2000 series protective cover for oil	1
GT25-05PCO	GOT2000 Series Protective Cover for Oil for GT27/GT25/GT23 User's Manual (This manual)	1

1. OVERVIEW

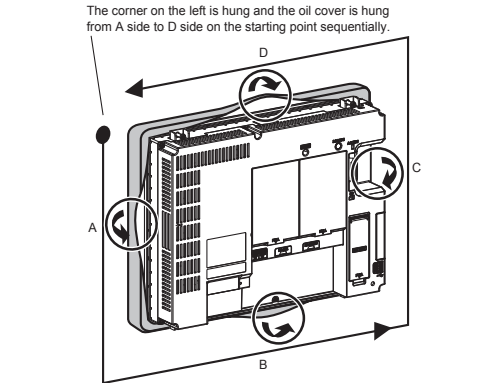
This user's manual explains GOT 2000 series protective cover for oil (hereinafter referred to as the protective cover for oil). Use of the protective cover for oil improves oil resistance and chemical resistance of the GOT.*1

*1: It is not the one to guarantee all customer's environments. Moreover, it is not likely to be able to use it in the environment to which oil or the medicine splashes for a long time and the environment with which Oilmist is filled.

The following table shows the protective covers for oil and the screen sizes for the applicable GOT

Model	Screen sizes for the applicable GOTs
GT20-15PCO	15"
GT20-12PCO	12.1"
GT20-10PCO	10.4"
GT20-08PCO	8.4"
GT25-05PCO	5.7"

3) From the place where the cover is hung, hang the corner of the cover sequentially and attach the entire edge of the cover to cover rubber packing parts in the back of the front panel of the GOT. (It is the order of the arrow from A side to D side.)

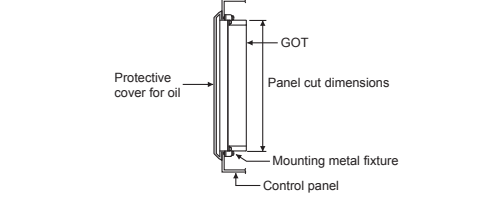


POINT

Please confirm all surroundings. Whether the rubber packing part is surely covered to prevent going into such as the liquids in the board.

Make sure that corners of protective cover for oil match those of GOT front.

4) Mount the GOT onto the control panel. When the control panel is dirty, clean the control panel. The panel cutting dimensions and mounting screw tightening torque with the protective cover for oil are the same as those without the cover. For mounting the GOT on the control panel, refer to the GOT2000 Series User's Manual (Hardware)



4.2 Removing the protective cover

Perform the reverse procedure to attaching the protective cover for oil.

2. SPECIFICATIONS

2.1 Performance specifications

The performance specifications of the protective cover for oil are indicated below. The general specifications of the protective cover for oil are the same as those of the GOT.

For the general specifications of the GOT, refer to the GOT2000 Series User's Manual (Hardware).

Item	GT20-15PCO	GT20-12PCO	GT20-10PCO	GT20-08PCO
Level of protection	IP67F Caution: Oil or the medicine might not be able to splash for a long time, and to use it in the environment with which Oilmist is filled.			
Material	Cover: Nitrile rubber, Display: PET sheet			
Weight	0.31kg	0.21kg	0.20kg	0.16kg

Item	GT25-05PCO
Level of protection	IP67F Caution: Oil or the medicine might not be able to splash for a long time, and to use it in the environment with which Oilmist is filled.
Material	Cover: Nitrile rubber, Display: PET sheet
Weight	0.09kg

POINT

For installing the GOT with the protective cover for oil, the control panel thickness must be 1.6 to 3mm because of the cover thickness. (Control panel thickness without the cover: 1.6 to 4mm)

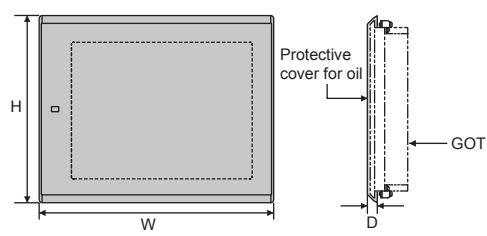
2.2 Oil resistance, chemical resistance

The protective cover for oil is made of materials with high oil and chemical resistance so that the cover can be used in various oil and chemical atmospheres. Because oils, including cutting oils, contain a small amount of additives depending on oil products, oil resistance of the cover cannot be stated. Prior to use the cover, test the cover in operating environments, and then check the oil and chemical resistance of the cover.

- Test contents and oil resistance of cover
- The protective cover for oil is soaked in the following oils for 2000 hours, and then oil resistance of the cover is checked.

Oil type	Product	Change in appearance and dimension	Adhesion between cover and sheet	Oil resistance
Water-insoluble cutting oil	Grinding oil (Yushiron oil CL35)	No change	No change	○
Water-soluble cutting oil	Grinding oil (Nortake cool CG-50P)	No change	No change	○

3. EXTERNAL DIMENSIONS



Dimensions	GT20-15PCO	GT20-12PCO	GT20-10PCO	GT20-08PCO
W	409 (16.10)	372 (14.65)	314 (12.36)	252 (9.92)
H	314.5 (12.38)	261 (10.28)	233 (9.96)	209 (9.18)
D	12.5 (0.49)	12 (0.47)	12 (0.47)	12 (0.47)

Dimensions	GT25-05PCO
W	178 (7.01)
H	154 (6.06)
D	12 (0.47)

Unit: mm (inch)

5. PRECAUTIONS FOR USE

- The protective cover for oil is a consumable product. Check the cover for scratch, damage or dirt at regular intervals, and replace with new one if necessary.
- Do not push the protective cover for oil with pointed tools, including mechanical pencils and screwdrivers. Doing so causes scratches and damages of the cover.
- Do not clean the protective cover for oil with bleaches, thinners, organic solvents, corrosive chemicals, and others. Doing so causes changes in shape and color of the cover.
- When the protective cover for oil is attached to the GOT, do not stretch and bend the cover too much. Doing so may cause a separation between the sheet and rubber.
- Do not place or use the protective cover for oil in direct sunshine. When the protective cover for oil gets dusts, wipe the dusts off with a damp cloth.
- When the protective cover for oil is used, the USB connector on the GOT front face cannot be used.
- When the protective cover for oil is used, the human sensor does not correctly operate. Disable the human sensor with the utility. For the human sensor setting, refer to the GOT2000 Series User's Manual (Hardware).
- Do not attach and remove the protective cover for oil frequently. Doing so reduces oil resistance and chemical resistance.
- It is not the one to guarantee all customer's environments. Moreover, it is not likely to be able to use it in the environment to which oil splashes for a long time and the environment with which Oilmist is filled.

Warranty

Mitsubishi will not be held liable for damage caused by factors found not to be the cause of Mitsubishi; machine damage or lost profits caused by faults in the Mitsubishi products; damage, secondary damage, accident compensation caused by special factors unpredictable by Mitsubishi; damages to products other than Mitsubishi products; and to other duties.

For safe use

- This product has been manufactured as a general-purpose part for general industries, and has not been designed or manufactured to be incorporated in a device or system used in purposes related to human life.
- Before using the product for special purposes such as nuclear power, electric power, aerospace, medicine or passenger movement vehicles, consult with Mitsubishi.
- This product has been manufactured under strict quality control. However, when installing the product where major accidents or losses could occur if the product fails, install appropriate backup or failsafe functions in the system.

Country/Region	Sales office/Tel
U.S.A	Mitsubishi Electric Automation Inc. 500 Corporate Woods Parkway Vernon Hills, IL 60061, U.S.A. Tel : +1-847-478-2100
Brazil	MELCO-TEC Rep. Com.e Assessoria Tecnica Ltda. Rua Correia Dias, 184, Edificio Paraiso Trade Center-8 andar Paraiso, Sao Paulo, SP Brazil Tel : +55-11-5908-8331
Germany	Mitsubishi Electric Europe B.V. German Branch Gothaer Strasse 8 D-40880 Ratingen, GERMANY Tel : +49-2102-486-0
U.K	Mitsubishi Electric Europe B.V. UK Branch Travellers Lane, Hatfield, Hertfordshire., AL 10 8XB, U.K. Tel : +44-1707-276100
Italy	Mitsubishi Electric Europe B.V. Italian Branch Centro Dir. Colleoni, Pal. Perseo-Ingr.2 Via Paracelso 12, I-20041 Agrate Brianza., Milano, Italy Tel : +39-039-60531
Spain	Mitsubishi Electric Europe B.V. Spanish Branch Carretera de Rubi 76-80, E-08190 Sant Cugat del Valles, Barcelona, Spain Tel : +34-93-565-3131
France	Mitsubishi Electric Europe B.V. French Branch 25, Boulevard des Bouvets, F-92741 Nanterre Cedex, France Tel : +33-1-5568-5568
South Africa	Circuit Breaker Industries Ltd. Private Bag 2016, ZA-1600 Isando, South Africa Tel : +27-11-928-2000
Hong Kong	Mitsubishi Electric Automation (Hong Kong) Ltd. 10th Floor, Manulife Tower, 169 Electric Road, North Point, Hong Kong Tel : +852-2887-8870
China	Mitsubishi Electric Automation (China) Ltd. 4/F Zhi Fu Plaza, No.80 Xin Chang Road, Shanghai 200003, China Tel : +86-21-6120-0808
Taiwan	Setsuyo Enterprise Co., Ltd. 6F No.105 Wu-Kung 3rd.Rd. Wu-Ku Hsiang, Taipei Hsine, Taiwan Tel : +886-2-2299-2499
Korea	Mitsubishi Electric Automation Korea Co., Ltd. 1480-6, Gayang-dong, Gangseo-ku Seoul 157-200, Korea Tel : +82-2-3660-9552
Singapore	Mitsubishi Electric Asia Pte. Ltd. 307 Alexandra Road #05-01/02, Mitsubishi Electric Building, Singapore 159943 Tel : +65-6470-2460
Thailand	Mitsubishi Electric Automation (Thailand) Co., Ltd. Bang-Chan Industrial Estate No.111 Moo 4, Serithai Rd, T.Kannayao, A.Kannayao, Bangkok 10230 Thailand Tel : +66-2-517-1326
Indonesia	P.T. Autoteknindo Sumber Makmur Muara Karang Selatan, Block A/Utara No.1 Kav. No.11 Kawasan Industri Pergudangan Jakarta - Utara 14440, P.O.Box 5045 Jakarta, 11050 Indonesia Tel : +62-21-6630833
India	Messung Systems Pvt. Ltd. Electronic Sadan NO:III Unit No15, M.I.D.C Bhosari, Pune-411026, India Tel : +91-20-2712-3130
Australia	Mitsubishi Electric Australia Pty. Ltd. 348 Victoria Road, Rydalmere, N.S.W 2116, Australia Tel : +61-2-9684-7777

MITSUBISHI ELECTRIC CORPORATION
 HEAD OFFICE : TOKYO BUILDING, 2-7-3 MARUNOUCHI, CHIYODA-KU, TOKYO 100-8310, JAPAN
 NAGOYA WORKS : 1-14, YADA-MINAMI 5-CHOME, HIGASHI-KU, NAGOYA, JAPAN

When exported from Japan, this manual does not require application to the Ministry of Economy, Trade and Industry for service transaction permission.
 Specifications subject to change without notice.
 Printed in Japan, April 2015.