



Installation Instructions

Introduction

Thank you for purchasing MITSUBISHI Integrated FA Software, MELSOFT series.  
This document explains how to install and uninstall MR Configurator2. Please read carefully before installing the product to your personal computer. See also Setup Guidance (PDF file) in the CD-ROM, which explains how to set up the product.

Product Makeup

Model name	Product name	Quantity
SW1DNC-MRC2-E (English version package)	MELSOFT MR Configurator2 product (1 license product) CD-ROM	1
	Installation Instructions (This document)	1
	How to register software	1
	License Certificate	1

Precautions

- We do not guarantee any commercially available Microsoft® Windows® Operating System products that are introduced in this manual.
- This software's copyright is owned by Mitsubishi Electric Corporation.
- This software requires one license per computer to be purchased.
- This product (including manual) can be used under the Software License Agreement only.
- We do not take any responsibilities for the consequences of operating this product (including manual).



Acknowledgements

- Reprinting or reproducing the part or all the contents of this document in any form for any purpose without the permission of Mitsubishi Electric Corporation is strictly forbidden.
- Although we have made the utmost effort to follow the revisions of the software and hardware, in some cases, unsynchronized matter may occur.
- The information in this document may be subject to change without notice.
- We do not take any responsibility for the virus infection and network failure caused by temporary deactivation of antivirus or security software.

Operating Environment

Item	Contents
Personal computer	Windows® supported personal computer
Personal computer main body	OS
	Microsoft® Windows® 8.1 Enterprise Operating System Microsoft® Windows® 8.1 Pro Operating System Microsoft® Windows® 8.1 Operating System Microsoft® Windows® 8 Enterprise Operating System Microsoft® Windows® 8 Pro Operating System Microsoft® Windows® 8 Operating System Microsoft® Windows® 7 Enterprise Operating System Microsoft® Windows® 7 Ultimate Operating System Microsoft® Windows® 7 Professional Operating System Microsoft® Windows® 7 Home Premium Operating System Microsoft® Windows® 7 Starter Operating System Microsoft® Windows Vista® Enterprise Operating System Microsoft® Windows Vista® Ultimate Operating System Microsoft® Windows Vista® Business Operating System Microsoft® Windows Vista® Home Premium Operating System Microsoft® Windows® XP Professional, Service Pack 2 or later Microsoft® Windows® XP Home Edition, Service Pack 2 or later
	CPU
	Desktop PC: Intel® Celeron® Processor 2.8GHz or higher Laptop PC : Intel® Pentium® M Processor 1.7GHz or higher
	Required memory
	512MB or more recommended (For 32-bit edition) 1GB or more recommended (For 64-bit edition)
Available hard disk space	When installing MR Configurator2: Available hard disk space : 1GB or more When operating MR Configurator2: Available virtual memory space : 512MB or more
Disk drive	CD-ROM supported disk drive
Monitor	Resolution 1024 x 768 pixels or higher
Communication interfaces	RS-232 port USB port Ethernet port

Precautions

- (1) If Microsoft® Windows® XP or later is used, the following functions cannot be used, this product may not operate normally.
- Activating the application with Windows compatible mode
  - Simplified user switch-over
  - Remote desktop
  - Large fonts (Detail settings of screen property)
  - DPI setting other than that of the normal size (Detail settings of screen property)
  - 64-bit edition<sup>(Note-1)</sup>
  - Windows XP Mode
  - Windows Touch<sup>(Note-1)</sup> : Supported by Windows® 7 or later.
- (2) In Windows Vista® or later is used, log in as a user having User authority or higher.
- (3) If Windows® 8 or later is used, the following functions cannot be used.
- Hyper-V
  - Modern UI Style

Installation

Install MR Configurator2 to a personal computer.

Confirm before installation

- Log on to a personal computer as a user having an attribute of "Administrator" (Computer administration).
- Terminate all the applications running under Microsoft® Windows® Operating System before installation.
- Install this product before mounting any interface devices for communicating with a personal computer or before connecting a personal computer and a motion CPU via USB interface.
- Deactivate temporarily antivirus or security software before installation.

Point

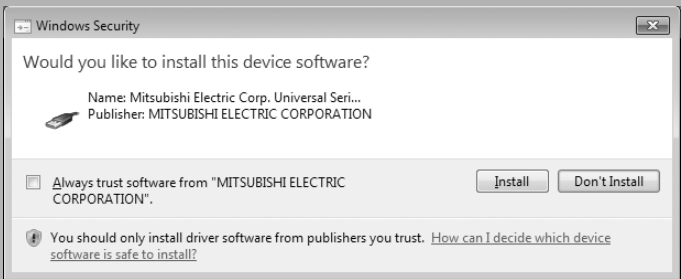
- A serial number is written on the "Software registration card" included with the product. Separate the 12 digit number into 3 and 9 digits and enter it.

1. Insert the CD-ROM to the CD-ROM drive. Double-click "Setup.exe" (Otherwise, it is displayed as "setup".) in the CD-ROM.
2. Following the onscreen instructions, select or enter the necessary information.

Precautions

- If the following messages are displayed before completing the installation of this product, the driver must be installed.
- If the driver is not installed, communication may be partly interrupted. In this case, reinstall MR Configurator2.

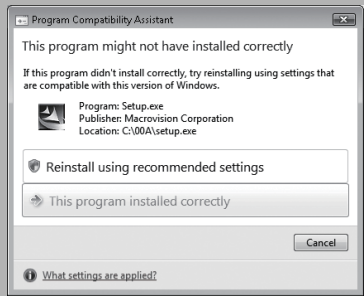
When using Windows Vista® or later



1. Select "Install" and install the driver.

- If an overwrite install has been done to upgrade the version of MR Configurator2 when Microsoft® Windows Vista® or later is used, the following message may be displayed. In this case, select "This program installed correctly".

When using Windows Vista® or later



1. Select "This program installed correctly"

When using Windows® XP

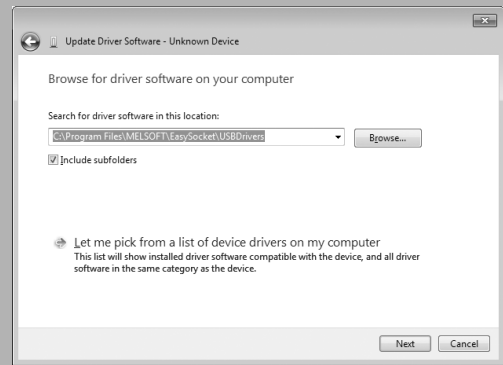


1. Select "Continue Anyway" and install the driver.

# Installing the USB driver

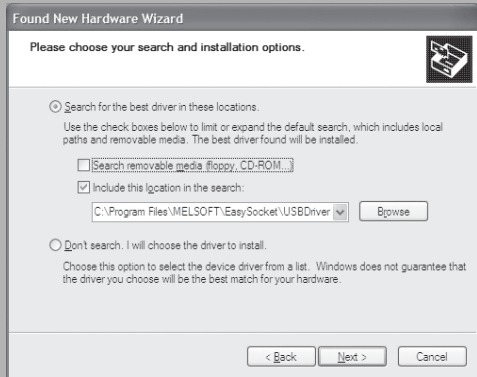
In order to commIn order to communicate with a servo amplifier via USB, the USB driver needs to be installed.

## When using Windows® 7 or later



1. Connect a personal computer and a servo amplifier with a USB cable, and hen turn on the servo amplifier.
2. “Device driver software was not successfully installed” popup window is displayed. Select [Control Panel] – [System and Security] – [Administrative Tools], and select “Update Driver Software” of [Unknown device] in the Device Manager.
3. The [Found New Hardware - Unknown Device] dialog is displayed. Select "Don't search online". Check "Browse my computer for driver software (advanced)", and then set "EZSocket\EZSocketSv" of the folder where MR Configurator2 has been installed. If multiple MELSOFT products are installed previously, refer to their installed location. ("\\Melsec\EZSocket\EZSocketSv" or "\\[Folder where this product is installed]\EZSocket\EZSocketSv")

## When using Windows® XP



1. Connect a personal computer and a servo amplifier with a USB cable, and then turn on the servo amplifier.
2. The [Welcome to the Found New Hardware Wizard] dialog box is displayed. Select "Install from a list or specific location (Advanced)".
3. The [Please choose your search and installation options] dialog box is displayed. Select "Search for the best driver in these locations". Check "Include this location in the search", and then set "EZSocket\EZSocketSv" of the folder where MR Configurator2 has been installed. If multiple MELSOFT products are installed previously, refer to their installed location. ("\\Melsec\EZSocket\EZSocketSv" or "\\[Folder where this product is installed]\EZSocket\EZSocketSv")

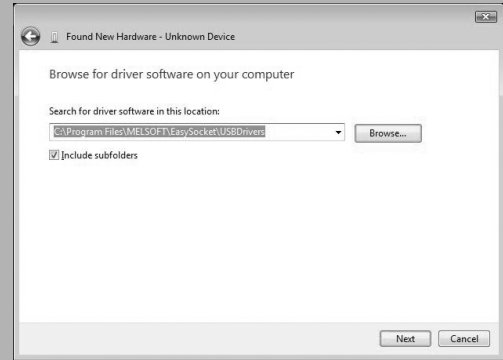
### Point

If the USB driver cannot be installed, confirm the following settings.

[Control Panel] - [System] - [Hardware] - [Driver Signing]

- In [Driver Signing], if "Block - Never install unsigned driver software" is selected, the USB driver may not be installed.
- In [Driver Signing], select "Ignore - Install the software anyway and don't ask for my approval", or "Warn - Prompt me each time to choose an action", and execute the USB driver installation.

## When using Windows Vista®



1. Connect a personal computer and a servo amplifier with a USB cable, and hen turn on the servo amplifier.
2. The [Found New Hardware] dialog box is displayed. Select "Locate and install driver software (recommended)".
3. The [Found New Hardware - Unknown Device] dialog is displayed. Select "Don't search online". Check "Browse my computer for driver software (advanced)", and then set "EZSocket\EZSocketSv" of the folder where MR Configurator2 has been installed. If multiple MELSOFT products are installed previously, refer to their installed location. ("\\Melsec\EZSocket\EZSocketSv" or "\\[Folder where this product is installed]\EZSocket\EZSocketSv")

# Uninstallation

Uninstall MR Configurator2 from a personal computer.

1. Execute the MR Configurator2 uninstallation from the control panel of Windows®.

Microsoft, Windows are registered trademarks of Microsoft Corporation in the United States and other countries.  
Intel, Celeron and Pentium M are registered trademarks of Intel Corporation in the United States and other countries.  
Ethernet is a trademark of Xerox Corporation.  
Setup Guidance in the CD-ROM is a PDF file. To view the PDF file, Adobe Reader is required. Download from the Adobe Systems website. Adobe Reader is a trademark or a registered trademark of Adobe Systems Incorporated.