

# Position Board Utility2

## Installation Instructions

### Introduction

Thank you for purchasing Position Board Utility2. This document explains how to install and uninstall Position Board Utility2<sup>(Note-1)</sup>. Please read carefully before installing the product to your personal computer.

(Note-1): Position Board Utility2 includes position board device driver, position board API library, and position board test tool that can execute the development of control application and operation confirmation for Mitsubishi position board MR-MC2□□.

### Product Makeup

Model name	Product name	Quantity
MRZJW3-MC2-UTL	Position Board Utility2 CD-ROM	1
	Installation Instructions (This manual)	1
	Software license agreement	1

### Precautions

- We do not guarantee any commercially available Microsoft<sup>®</sup> Windows<sup>®</sup> Operating System products that are introduced in this manual.
- This software's copyright is owned by Mitsubishi Electric Corporation.
- This software requires one license per computer to be purchased. However, only position board API library and position board device driver could be used for royalty free.
- This product (including manual) can be used under the Software License Agreement only.
- We do not take any responsibilities for the consequences of operating this product (including manual).
- User's Manual in the CD-ROM is a PDF file. To View the PDF file, Adobe Reader<sup>®</sup> is required. Download from the Adobe Systems Incorporated website.

### ⚠ Acknowledgements

- Reprinting or reproducing the part or all the contents of this document in any form for any purpose without the permission of Mitsubishi Electric Corporation is strictly forbidden.
- Although we have made the utmost effort to follow the revisions of the software and hardware, in some cases, unsynchronized matter may occur.
- The information in this document may be subject to change without notice.
- We do not take any responsibility for the virus infection and network failure caused by temporary deactivation of antivirus or security software.

### Operating Environment

Item	Contents	
Personal computer main body	Personal computer	Microsoft <sup>®</sup> Windows <sup>®</sup> supported personal computer
	OS	Microsoft <sup>®</sup> Windows <sup>®</sup> 8.1 English version (64-bit/32-bit) Microsoft <sup>®</sup> Windows <sup>®</sup> 8 English version (64-bit/32-bit) Microsoft <sup>®</sup> Windows <sup>®</sup> 7 English version (64-bit/32-bit) [Service Pack 1] Microsoft <sup>®</sup> Windows Vista <sup>®</sup> English version (32-bit) [Service Pack 2] Microsoft <sup>®</sup> Windows <sup>®</sup> XP English version (32-bit) [Service Pack 3]
	CPU	Desktop PC: Intel <sup>®</sup> Celeron <sup>®</sup> Processor 2.8GHz or higher Laptop PC : Intel <sup>®</sup> Pentium <sup>®</sup> M Processor 1.7GHz or higher
	Required memory	1GB or more recommended (For 32-bit edition) 2GB or more recommended (For 64-bit edition)
Available hard disk space	When installing Position Board Utility2: Available hard disk space : 1GB or more When operating Position Board Utility2: Available virtual memory space : 512MB or more	
Disk drive	CD-ROM supported disk drive	
Monitor	Resolution 1024 x 768 pixels or higher	
Communication interfaces	PCI/PCI Express <sup>®</sup> BUS USB port	

### Precautions

- The following functions cannot be used when the computer is running under Microsoft<sup>®</sup> Windows<sup>®</sup> 8.1, Microsoft<sup>®</sup> Windows<sup>®</sup> 8, Microsoft<sup>®</sup> Windows<sup>®</sup> 7, Microsoft<sup>®</sup> Windows Vista<sup>®</sup>, Microsoft<sup>®</sup> Windows<sup>®</sup> XP. This product may not perform properly when these functions are used.
  - Activating the application with Windows compatible mode
  - Simplified user switch-over
  - Remote desktop
  - Large fonts (Detail settings of screen property)
  - DPI setting other than that of the normal size (Detail settings of screen property)
- In Windows<sup>®</sup> 8.1/Windows<sup>®</sup> 8/Windows<sup>®</sup> 7/Windows Vista<sup>®</sup>, log in as a user having User authority or higher.
- The following functions cannot be used when the computer is running under Windows<sup>®</sup> 7.
  - Windows XP Mode, Touch
- The following functions cannot be used when the computer is running under Windows<sup>®</sup> 8.1/Windows<sup>®</sup> 8.
  - Hyper-V, Modern UI Style, Touch

## Installation

Install Position Board Utility2 to a personal computer.

### Confirm before installation

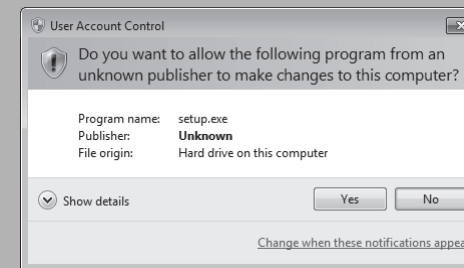
- Log on to a personal computer as a user having an attribute of "Administrator" (Computer administration).
- Terminate all the applications running under Windows<sup>®</sup> Operating System before installation.
- Install this product before connecting a personal computer and a position board via PCI/PCI Express<sup>®</sup> BUS interface or USB interface.
- When using antivirus or security software, the warn appears and you may not be able to install. Deactivate temporarily antivirus or security software before installation.

- Insert the CD-ROM to the CD-ROM drive. Double-click "Setup.exe" (Otherwise, it is displayed as "setup".) in the CD-ROM.
- Following the instructions on the screen, select or enter the necessary information.

### Precautions

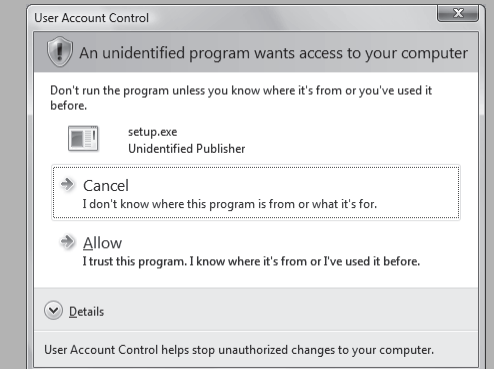
- When using Windows<sup>®</sup> 8.1/Windows<sup>®</sup> 8/Windows<sup>®</sup> 7/Windows Vista<sup>®</sup>, the User Account Control screen appears if user account control is enabled. Click "Yes" or "Allow".

### When using Windows<sup>®</sup> 8.1/Windows<sup>®</sup> 8/Windows<sup>®</sup> 7



- Select "Yes".

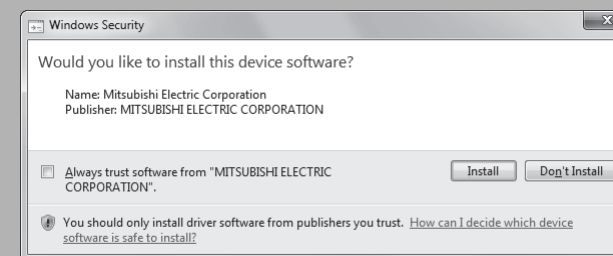
### When using Windows Vista<sup>®</sup>



- Select "Allow".

- If the following messages are displayed several times before completing the installation of this product, the device driver must be installed.
- If the device driver is not installed, connection may be partly interrupted. In this case, reinstall Position Board Utility2.

### When using Windows<sup>®</sup> 8.1/Windows<sup>®</sup> 8/Windows<sup>®</sup> 7/Windows Vista<sup>®</sup>



- Select "Install this driver software anyway" and install the device driver.

### When using Windows<sup>®</sup> XP

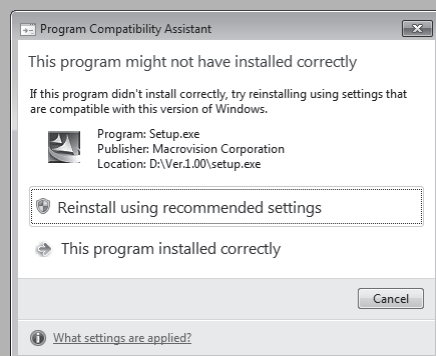


- Select "Continue Anyway" and install the device driver.

Continue to the Backside

- If an overwrite install has been done to upgrade the version of Position Board Utility2 when using Windows® 8.1/Windows® 8/Windows® 7/Windows Vista®, the following message may be displayed. In this case, select "This program installed correctly".

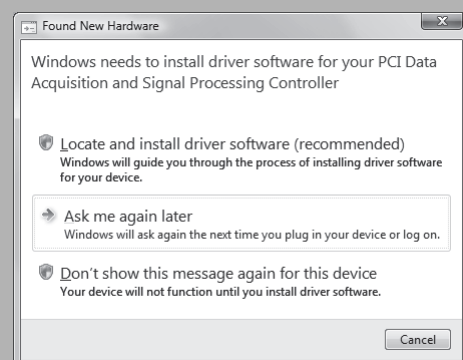
## When using Windows® 8.1/Windows® 8/Windows® 7/Windows Vista®



1. Select "This program installed correctly".

- The "Found New Hardware Wizard" may temporarily appear during the installation. This occurs for requesting a device registration to Windows®, and this screen will disappear automatically after the completion of the registration processing of Windows®. At this time, never execute any operation to the "Found New Hardware Wizard".
- When using Windows Vista® /Windows® XP, by not installed, the "Found New Hardware Wizard" may appear, when turning on the power supply of personal computer connecting a position board. In this case, select "Cancel" for all, although the screen appears only the number of the connected position boards that have not been recognized.

## When using Windows Vista®



1. Select "Cancel".

## When using Windows® XP

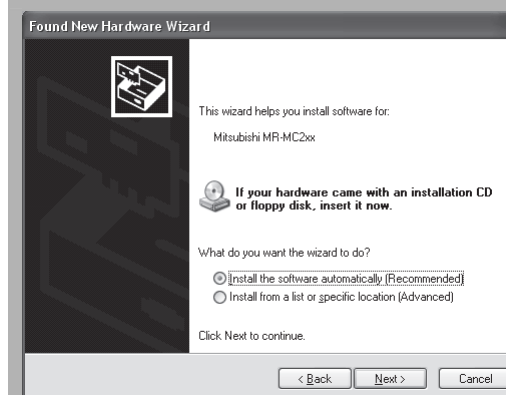


1. Select "Cancel".

## Installing the PCI/PCI Express® device driver

When using Windows® XP, in order to connect with a position board via PCI/PCI Express® BUS interface, the PCI/PCI Express® device driver needs to be installed. When using Windows® 8.1/Windows® 8/Windows® 7/Windows Vista®, the PCI/PCI Express® device driver is automatically installed.

### When using Windows® XP

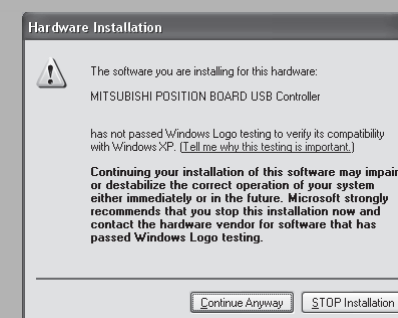


1. The "Found New Hardware Wizard" appears when connecting the position board to the personal computer only for the first time. The same screen appears when the slot to be connected is changed.
2. The "Welcome to the Found New Hardware Wizard" dialog may appear. In this case, select "No, not this time".
3. The "This wizard helps you install software for." dialog appears. Select "Install the software automatically [Recommended]".
4. The "The Wizard has finished installing the software for." dialog appears. The installing of the PCI/PCI Express® device driver completes by clicking "Finish".

## Installing the USB device driver

When using Windows® XP, in order to connect with a position board via USB interface, the USB device driver needs to be installed. When using Windows® 8.1/Windows® 8/Windows® 7/Windows Vista® the USB device driver is automatically installed.

### When using Windows® XP



1. The "Found New Hardware Wizard" appears when connecting the USB of the position board to the personal computer only for the first time. The same screen appears when the USB port to be connected is changed.
2. The "Welcome to the Found New Hardware Wizard" dialog may appear. In this case, select "No, not this time".
3. The "This wizard helps you install software for." dialog screen appears. Select "Install the software automatically [Recommended]".
4. The dialog of Windows Logo Test appears. The installing of the USB device driver completes by clicking "Continue Anyway".

## Uninstallation

Uninstall Position Board Utility2 from a personal computer.

1. Execute the Position Board Utility2 uninstallation from the control panel of Windows®.

Microsoft, Windows are registered trademarks of Microsoft Corporation in the United States and other countries.  
 Intel, Pentium and Celeron are trademarks or registered trademarks of Intel Corporation in the United States and other countries.  
 PCI Express is US registered trademarks and/or service marks of PCI-SID  
 Adobe Reader is a registered trademark of Adobe Systems Incorporated.  
 Other company names and product names herein are trademarks or registered trademarks of their respective owners.