



Sensors in SUS 316L Housing Survive Years of High-Pressure Chemical Washdown

- Reduce your replacement costs where sensors fail frequently due to high-pressure chemical washdown
- Use in meat, poultry and fish processing in cutting, weighing and packaging machinery
- Meets IP69K standards (1,450 psi washdown)
- Smooth shape allows easier cleansing: few seams and laser marked labels eliminate contamination
- RoHS compliant: contains no lead (Pb) or hazardous materials
- Models with 2m cable and M8 connector are available

Superior Chemical Resistance

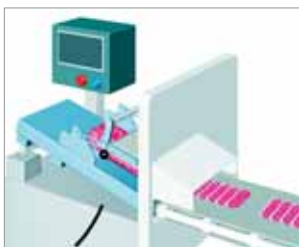
The E3ZM sensor was tested with TEK121, P3-oxonia and P3-topax for 240 hours and was 200 times more durable than other plastic sensors.

Category	Solution	Concentration	Temperature
Chemical	Sodium Hydroxide (NaOH)	1.5%	70°C
	Potassium Hydroxide (KOH)	1.5%	70°C
	Phosphoric Acid (H3PO4)	2.5%	70°C
	Sodium Hypochlorite (NaClO)	0.3%	25°C
	Hydrogen Peroxide (H2O2)	6.5%	25°C
Alkaline Foam Detergent	P3-Topax-66s (Ecolab)	3.0%	70°C
Acidic Foam Detergent	P3-Topax-56 (Ecolab)	5.0%	70°C
Disinfectant	P3-Oxonia Active 90 (Ecolab)	1.0%	25°C
	TEK121 (ABC Compounding)	1.1%	25°C

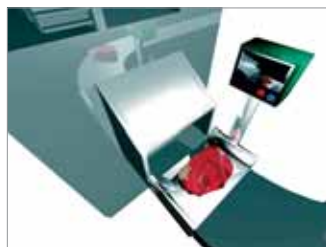
Specifications

- Voltage range: 12-30 VDC
- Load rating: 100 mA at 30 VDC max., separate NPN and PNP output models
- Current consumption: 25 mA max. (reflective); 20 mA, emitter and receiver (through-beam)
- Response time: 1 ms max.
- Circuit protection: Power source reverse polarity; Output reverse polarity; Short-circuit; Mutual interference (except through-beam)
- Operating ambient: -25° to 55°C, 35% to 85% RH
- Operation: Switch-selectable, Light-ON/Dark-ON
- Connection: 4-pin M8 connector or 2 m cable models
- Dimensions: 32.2 H x 10.8 W x 21 D mm

Applications



Meat slicing operations



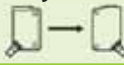
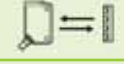
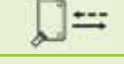
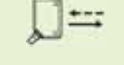
Meat weighing station



Tray wrapping raw foods

Ordering Information

316L Stainless Steel Photoelectric Sensors

Sensing method	Features	Light source	Sensing distance	Output type	Model	
					Cable	Connector
 Through-beam Detects 12 mm dia. objects		Infrared (870 nm)	15 m	NPN	E3ZM-T61 2M	E3ZM-T66
				PNP	E3ZM-T81 2M	E3ZM-T86
 Retro-reflective Polarized; Order reflector separately		Red (660 nm)	0.1 to 4 m with E39-R1S 0.1 to 3 m with E39-R1K	NPN	E3ZM-R61 2M	E3ZM-R66
				PNP	E3ZM-R81 2M	E3ZM-R86
 Diffuse reflective Detects 60 mm square min. object (300 mm, rated value)		Infrared (860 nm)	1 m	NPN	E3ZM-D62 2M	E3ZM-D67
				PNP	E3ZM-D82 2M	E3ZM-D87
 Distance settable Background suppression		Red (650 nm)	10 to 100 mm; 4 mm spot dia.	NPN	E3ZM-LS61H 2M	E3ZM-LS66H
				PNP	E3ZM-LS81H 2M	E3ZM-LS86H
		Red (660 nm)	10 to 150 mm; 12 mm spot dia.	NPN	E3ZM-LS62H 2M	E3ZM-LS67H
				PNP	E3ZM-LS82H 2M	E3ZM-LS87H
		Red (660 nm)	10 to 200 mm; 18 mm spot dia.	NPN	E3ZM-LS64H 2M	E3ZM-LS69H
				PNP	E3ZM-LS84H 2M	E3ZM-LS89H

Connector Cables

Compatible sensor	Connector size	Cable type	Enclosure rating	Connector shape	Cable length	Model
E3ZM-6	M8	Four-wire	IP69K	Straight	2 m	Y92E-S08PVC4S2M-L
					5 m	Y92E-S08PVC4S5M-L
			IP67	Right angle	2 m	Y92E-S08PVC4A2M-L
					5 m	Y92E-S08PVC4A5M-L

Reflectors for E3ZM-R Sensors

Application	Sensing distance	Dimensions (mm)	Model
For polarized light source	0.1 to 4 m	59.9 H x 40.3 W x 7.5 D	E39-R1S
Fog preventive coating	0.1 to 3 m	59.9 H x 40.3 W x 7.5 D	E39-R1K

Mounting Brackets

Description	L-bracket, horizontal	L-bracket, horizontal	L-bracket, vertical
Appearance			
Model	E39-L153	E39-L104	E39-L44

Note: Specifications are subject to change.

OMRON

OMRON ELECTRONICS LLC
877.486.6766
www.omron247.com

OMRON CANADA
416.286.6465
www.omron.ca

MEXICO SALES OFFICES

Mexico, D.F. 555.660.3144 Monterrey, N.L. 818.377.4281
Ciudad Juárez 656.623.7083 Querétaro 442.135.4510

OTHER LATIN AMERICAN SALES

Florida, EU 1.954.227.2121 www.espanol.omron.com

ARGENTINA SALES OFFICE

Cono Sur 54.114.787.1129

BRAZIL SALES OFFICE

Sao Paulo 55.11.2101.6310 www.omron.com.br

CHILE SALES OFFICE

Santiago 562.206.4592

