

Solid State Relays G3□-VD

G3F/G3FD

CSM_G3F_G3FD_DS_E_4_2

International Standards for G3F Series, Same Profile as MY Power Relays

- Shape-compatible with mechanical relays.
- Certified by UL, CSA, and VDE (model numbers with a suffix of “-VD”).
- Socket type, same size as MY Power Relays.
- Operation indicator provided to confirm input (model numbers with “N” before the suffix).



Refer to *Safety Precautions* on page 6.



Note: The socket is optional.

For the most recent information on models that have been certified for safety standards, refer to your OMRON website.

Model Number Structure

■ Model Number Legend

G3F-□□□□□-□
1 2 3 4 5 6 7

1. Basic Model Name

G3F: Solid State Relay

2. Rated Load Power Supply Voltage

2: 200 VAC

3. Rated Load Current

02: 2 A

03: 3 A

4. Terminal Type

S: Plug-in terminals

5. Zero Cross Function

Blank: Equipped with zero cross functions

L: Not equipped with zero cross function

6. Operation Indicator

Blank: Not equipped with operation indicator

N: Equipped with operation indicator

7. Certification

VD: Certified by UL, CSA, and VDE

G3FD-□□□□□-□
1 2 3 4 5 6 7

1. Basic Model Name

G3F: Solid State Relay

2. Load Power Supply Type

D: DC

3. Rated Load Power Supply Voltage

X: 50 VDC

1: 100 VDC

4. Rated Load Current

02: 2 A

03: 3 A

5. Terminal Type

S: Plug-in terminals

6. Operation Indicator

Blank: Not equipped with operation indicator

N: Equipped with operation indicator

7. Certification

VD: Certified by UL, CSA, and VDE

Ordering Information

■ List of Models

Isolation	Zero cross function	Indicator	Rated output load	Rated input voltage	Model
Photocoupler	Yes	Yes	3 A at 100 to 240 VAC (See note 1.)	5 to 24 VDC	G3F-203SN-VD
			2 A at 100 to 240 VAC (See note 1.)	100/110 VAC 200/220 VAC	G3F-202SN-VD
Phototriac coupler	No		3 A at 100 to 240 VAC (See note 1.)	5 VDC	G3F-203SLN-VD
				12 VDC	
				24 VDC	
Photocoupler	-		3 A at 4 to 48 VDC (See note 2.)	5 to 24 VDC	G3FD-X03SN-VD
		2 A at 5 to 110 VDC		100/110 VAC 200/220 VAC 5 to 24 VDC	G3FD-102SN-VD
Photocoupler	Yes	No	3 A at 100 to 240 VAC (See note 1.)	4 to 24 VDC	G3F-203S-VD
Phototriac coupler	No			5 VDC 12 VDC 24 VDC	G3F-203SL-VD
Photocoupler	-		3 A at 4 to 48 VDC (See note 2.)	4 to 24 VDC	G3FD-X03S-VD
					2 A at 5 to 110 VDC

- Note:** 1. Product is labelled "240 VAC".
 2. Product is labelled "48 VDC".
 3. When ordering, specify the rated input voltage.

■ Accessories (Order Separately)

Connecting Sockets

Item	PYF08A-E	PY08	PY08-02	PY08QN(2)
Connecting	Front connecting	Back connecting		
Mounting method/ Terminal type	Track mounted/ screw terminals	Solder terminals	PCB terminals	Wrapping terminals
Hold-down clip	PYC-A1	PYC-P		

Specifications

■ Ratings (at an Ambient Temperature of 25°C)

Input

Model	Rated voltage	Operating voltage	Impedance	Voltage level	
				Must operate voltage	Must release voltage
G3F-203SN-VD	5 to 24 VDC	4 to 28 VDC	15 mA max. (See note.)	4 VDC max.	1 VDC min.
G3F-202SN-VD	100/110 VAC	75 to 125 VAC	41 kΩ±20%	75 VAC max.	20 VAC min.
	200/220 VAC	150 to 250 VAC	72 kΩ±20%	150 VAC max.	40 VAC min.
G3F-203SLN-VD	5 VDC	4 to 6 VDC	390 Ω±20%	4 VDC max.	1 VDC min.
	12 VDC	9.6 to 14.4 VDC	900 Ω±20%	9.6 VDC max.	
	24 VDC	19.2 to 28.8 VDC	2 kΩ±20%	19.2 VDC max.	
G3FD-X03SN-VD	5 to 24 VDC	4 to 28 VDC	1.5 kΩ ^{+20%} / _{-10%}	4 VDC max.	
G3FD-102SN-VD	5 to 24 VDC	4 to 28 VDC	1.5 kΩ ^{+20%} / _{-10%}	4 VDC max.	
	100/110 VAC	75 to 125 VAC	41 kΩ±20%	75 VAC max.	20 VAC min.
	200/220 VAC	150 to 250 VAC	72 kΩ±20%	150 VAC max.	40 VAC min.
G3F-203S-VD	4 to 24 VDC	3 to 28 VDC	15 mA max. (See note.)	3 VDC max.	1 VDC min.
G3F-203SL-VD	5 VDC	4 to 6 VDC	390 Ω±20%	4 VDC max.	
	12 VDC	9.6 to 14.4 VDC	900 Ω±20%	9.6 VDC max.	
	24 VDC	19.2 to 28.8 VDC	2 kΩ±20%	19.2 VDC max.	
G3FD-X03S-VD	4 to 24 VDC	3 to 28 VDC	1.5 kΩ ^{+20%} / _{-10%}	3 VDC max.	
G3FD-102S-VD					

Note: 1. The input impedance is given for the maximum operating range. For details, refer to the *Technical Guide for Solid State Relays*.
2. Constant-current input circuit.

Output

Model	Rated load voltage	Applicable load		
		Load voltage range	Load current	Inrush current
G3F-203SN-VD G3F-203SLN-VD G3F-203S-VD G3F-203SL-VD	100 to 240 VAC	75 to 264 VAC	0.1 to 3 A at 40°C	45 A (60 Hz, 1 cycle)
G3F-203SN-VD	100 to 240 VAC	75 to 264 VAC	0.1 to 2 A at 40°C	45 A (60 Hz, 1 cycle)
G3FD-X03SN-VD G3FD-X03S-VD	4 to 48 VDC	3 to 52.8 VDC	0.1 to 3 A at 40°C	18 A (10 ms)
G3FD-102SN-VD G3FD-102S-VD	5 to 110 VDC	3 to 125 VDC	0.1 to 2 A at 40°C	10 A (10 ms)

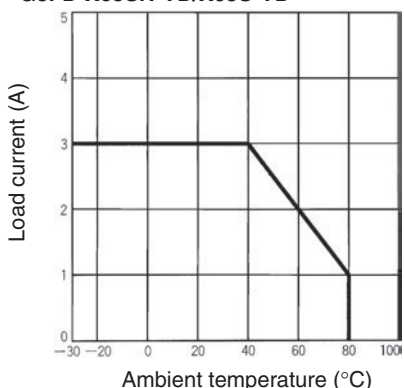
■ Characteristics

Item	G3F-203SN-VD G3F-202SN-VD G3F-203S-VD	G3F-203SLN-VD G3F-203SL-VD	G3FD-X03SN-VD G3FD-X03S-VD	G3FD-102SN-VD	G3FD-102S-VD
Operate time	1/2 of load power source cycle + 1 ms max. (DC input) 3/2 of load power source cycle + 1 ms max. (AC input)	1 ms max.	0.5 ms max.	0.5 ms max. (DC input) 20 ms max. (AC input)	0.5 ms max.
Release time	1/2 of load power source cycle + 1 ms max. (DC input) 3/2 of load power source cycle + 1 ms max. (AC input)	1/2 of load power source cycle + 1 ms max.	2 ms max.	2.5 ms max. (DC input) 20 ms max. (AC input)	2.5 ms max.
Output ON voltage drop	1.6 V (RMS) max.		1.5 V max.		
Leakage current	5 mA max. (at 100 VAC) 10 mA max. (at 200 VAC)	2.5 mA max. (at 100 VAC) 5 mA max. (at 200 VAC)	5 mA max. (at 50 VDC)	0.1 mA max. (at 100 VDC)	0.1 mA max. (at 100 VDC)
Insulation resistance	100 MΩ min. (at 500 VDC)				
Dielectric strength	2,000 VAC, 50/60 Hz for 1 min		1,500 VAC, 50/60 Hz for 1 min		
Vibration resistance	Destruction: 10 to 55 to 10 Hz, 0.75-mm single amplitude				
Shock resistance	Destruction: 1,000 m/s ²				
Ambient temperature	Operating: -30°C to 80°C (with no icing or condensation) Storage: -30°C to 100°C (with no icing or condensation)				
Ambient humidity	Operating: 45% to 85%				
Certified standards	G3F: UL508, CSA C22.2 No. 14, EN60947-4-3 G3FD: UL508, CSA C22.2 No. 14, EN60950-1				
EMC	Emission: EN55011 Group 1 Class B Immunity: EN61000-6-2				
Weight	Approx. 50 g				

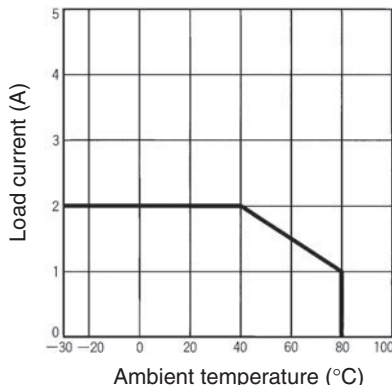
Engineering Data

Load Current vs. Ambient Temperature Characteristics

G3F-203SN-VD/203S-VD/203SLN-VD/
203SL-VD
G3FD-X03SN-VD/X03S-VD



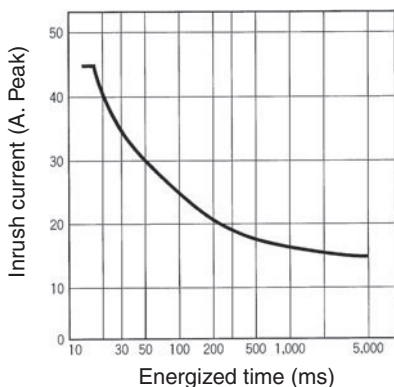
G3F-202SN-VD
G3FD-102SN-VD/102S-VD



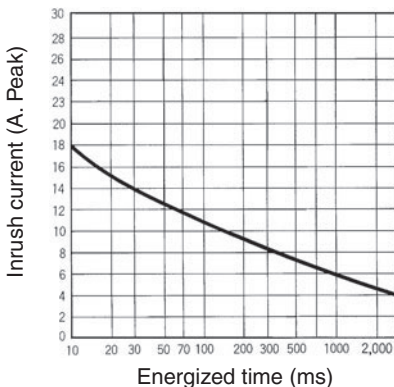
One Cycle Surge Current: Non-repetitive

Non-repetitive (Keep the inrush current to half the rated value if it occurs repetitively.)

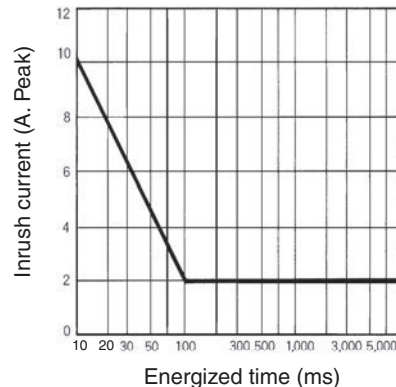
G3F-203SN-VD/203S-VD/202SN-VD/
203SLN-VD/203SL-VD



G3FD-X03SN-VD/X03S-VD

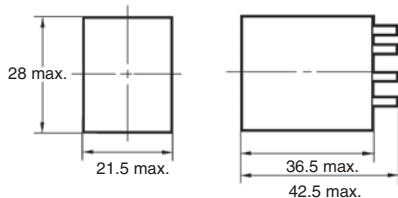


G3FD-102SN-VD/102S-VD

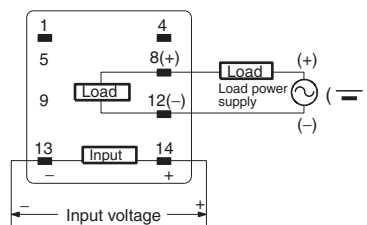


Dimensions

Note: All units are in millimeters unless otherwise indicated.



Terminal Arrangement/ Internal Connections



Note: The plus and minus symbols shown in parentheses are for DC loads. The load is possible to connect either + side or - side.

Safety Precautions

Refer to *Safety Precautions for All Solid State Relays*.

■ Precautions for Correct Use

Please observe the following precautions to prevent failure to operate, malfunction, or undesirable effect on product performance.

Connection

The SSR for DC switching use can connect to a load regardless of the polarity of the positive and negative output terminals.

Close Mounting of Multiple Relays

If multiple Relays are mounted side by side, be aware that the outer wall of each SSR works as a heat sink.

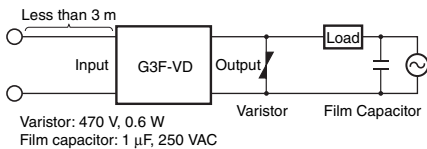
The SSR casing serves to dissipate heat. Install the Relays so that they are adequately ventilated. If poor ventilation is unavoidable, reduce the load current by half.

Protective Terminal

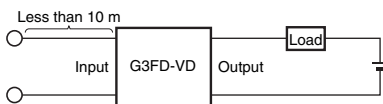
When using for AC inductive loads, connect the load terminals of the SSR to an inrush absorber (varistor).

EMC Directive Compliance

1. AC-switching models comply with EMC Directives under the following conditions ("-VD" models only).



- Connect a varistor between the output terminals.
 - Connect a film capacitor to the load power supply.
 - The input cable must be less than 3 m.
2. DC-switching models comply with EMC Directives under the following conditions ("-VD" models only).



- The input cable must be less than 10 m.

ALL DIMENSIONS SHOWN ARE IN MILLIMETERS.

To convert millimeters into inches, multiply by 0.03937. To convert grams into ounces, multiply by 0.03527.

In the interest of product improvement, specifications are subject to change without notice.

Read and Understand This Catalog

Please read and understand this catalog before purchasing the products. Please consult your OMRON representative if you have any questions or comments.

Warranty and Limitations of Liability

WARRANTY

OMRON's exclusive warranty is that the products are free from defects in materials and workmanship for a period of one year (or other period if specified) from date of sale by OMRON.

OMRON MAKES NO WARRANTY OR REPRESENTATION, EXPRESS OR IMPLIED, REGARDING NON-INFRINGEMENT, MERCHANTABILITY, OR FITNESS FOR PARTICULAR PURPOSE OF THE PRODUCTS. ANY BUYER OR USER ACKNOWLEDGES THAT THE BUYER OR USER ALONE HAS DETERMINED THAT THE PRODUCTS WILL SUITABLY MEET THE REQUIREMENTS OF THEIR INTENDED USE. OMRON DISCLAIMS ALL OTHER WARRANTIES, EXPRESS OR IMPLIED.

LIMITATIONS OF LIABILITY

OMRON SHALL NOT BE RESPONSIBLE FOR SPECIAL, INDIRECT, OR CONSEQUENTIAL DAMAGES, LOSS OF PROFITS OR COMMERCIAL LOSS IN ANY WAY CONNECTED WITH THE PRODUCTS, WHETHER SUCH CLAIM IS BASED ON CONTRACT, WARRANTY, NEGLIGENCE, OR STRICT LIABILITY.

In no event shall the responsibility of OMRON for any act exceed the individual price of the product on which liability is asserted.

IN NO EVENT SHALL OMRON BE RESPONSIBLE FOR WARRANTY, REPAIR, OR OTHER CLAIMS REGARDING THE PRODUCTS UNLESS OMRON'S ANALYSIS CONFIRMS THAT THE PRODUCTS WERE PROPERLY HANDLED, STORED, INSTALLED, AND MAINTAINED AND NOT SUBJECT TO CONTAMINATION, ABUSE, MISUSE, OR INAPPROPRIATE MODIFICATION OR REPAIR.

Application Considerations

SUITABILITY FOR USE

OMRON shall not be responsible for conformity with any standards, codes, or regulations that apply to the combination of products in the customer's application or use of the products.

At the customer's request, OMRON will provide applicable third party certification documents identifying ratings and limitations of use that apply to the products. This information by itself is not sufficient for a complete determination of the suitability of the products in combination with the end product, machine, system, or other application or use.

The following are some examples of applications for which particular attention must be given. This is not intended to be an exhaustive list of all possible uses of the products, nor is it intended to imply that the uses listed may be suitable for the products:

- Outdoor use, uses involving potential chemical contamination or electrical interference, or conditions or uses not described in this catalog.
- Nuclear energy control systems, combustion systems, railroad systems, aviation systems, medical equipment, amusement machines, vehicles, safety equipment, and installations subject to separate industry or government regulations.
- Systems, machines, and equipment that could present a risk to life or property.

Please know and observe all prohibitions of use applicable to the products.

NEVER USE THE PRODUCTS FOR AN APPLICATION INVOLVING SERIOUS RISK TO LIFE OR PROPERTY WITHOUT ENSURING THAT THE SYSTEM AS A WHOLE HAS BEEN DESIGNED TO ADDRESS THE RISKS, AND THAT THE OMRON PRODUCTS ARE PROPERLY RATED AND INSTALLED FOR THE INTENDED USE WITHIN THE OVERALL EQUIPMENT OR SYSTEM.

PROGRAMMABLE PRODUCTS

OMRON shall not be responsible for the user's programming of a programmable product, or any consequence thereof.

Disclaimers

CHANGE IN SPECIFICATIONS

Product specifications and accessories may be changed at any time based on improvements and other reasons.

It is our practice to change model numbers when published ratings or features are changed, or when significant construction changes are made. However, some specifications of the products may be changed without any notice. When in doubt, special model numbers may be assigned to fix or establish key specifications for your application on your request. Please consult with your OMRON representative at any time to confirm actual specifications of purchased products.

DIMENSIONS AND WEIGHTS

Dimensions and weights are nominal and are not to be used for manufacturing purposes, even when tolerances are shown.

PERFORMANCE DATA

Performance data given in this catalog is provided as a guide for the user in determining suitability and does not constitute a warranty. It may represent the result of OMRON's test conditions, and the users must correlate it to actual application requirements. Actual performance is subject to the OMRON Warranty and Limitations of Liability.

ERRORS AND OMISSIONS

The information in this document has been carefully checked and is believed to be accurate; however, no responsibility is assumed for clerical, typographical, or proofreading errors, or omissions.

2012.8

In the interest of product improvement, specifications are subject to change without notice.

OMRON Corporation
Industrial Automation Company

<http://www.ia.omron.com/>

(c)Copyright OMRON Corporation 2012 All Right Reserved.