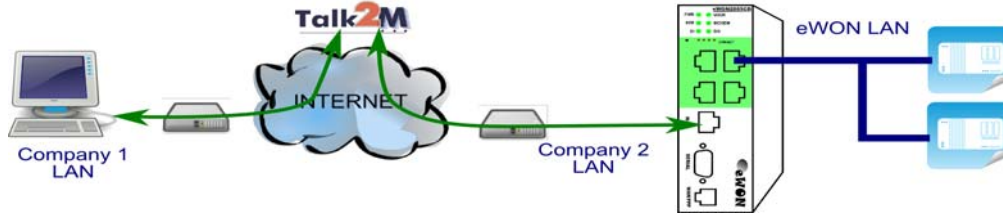


Remotely connect from an eWON Flexy to Omron CJ2 PLC and also send an email when there is an alarm

Installing eWON & Talk2M - Customer check list

Objective: This checklist allows you to prepare the installation of an eWON unit. This checklist should be used in conjunction with the Installation and Getting Started guides for your eWON and for Talk2M. These guides are available at <http://wiki.ewon.biz/Support>



1) eWON unit configuration

a) Download eBuddy.

The software companion tool eBuddy, will allow you to easily change your eWON's IP address, update the firmware, and create backups. eBuddy is available at http://wiki.ewon.biz/Support/01_Getting_Started

b) Upgrade the firmware.

It is recommended to upgrade the eWON unit to the latest firmware. Firmware 8.0s2 or higher is required for Talk2MFree+. Use eBuddy to upgrade the firmware.

2) Network configuration

The eWON must be configured properly to integrate into your existing networking scheme and to allow proper routing through the eWON. Use the following tables to review your networking decisions.

NOTE: The eWON's LAN and machine devices **MUST** be within the same subnet.

The eWON's LAN address and WAN address **MUST NOT** be within the same subnet.

The eWON's LAN address and the remote PC subnet **MUST NOT** overlap.

eWON LAN Interface (green port(s)) configuration

LAN IP Address	
Subnet Mask	
PLC IP Address(es)	

eWON WAN configuration

WAN Interface (Second Ethernet)

Static IP or DHCP?	
WAN IP address	
WAN Subnet Mask	
WAN Gateway IP	
WAN DNS	
HTTP Proxy settings	

GSM Modem

SIM Phone number	
Network Carrier	
APN	
Signal Strength > 14	
Username	
Password	

3) eCatcher Connection

a) Download eCatcher.

eCatcher is available at http://wiki.ewon.biz/Support/07_Download/10_EWON_Softwares

b) Install eCatcher with administrator rights.

c) Confirm any needed proxy settings.

If you reach the Internet through an NTLM proxy, the login must include the domain name: DOMAIN\user

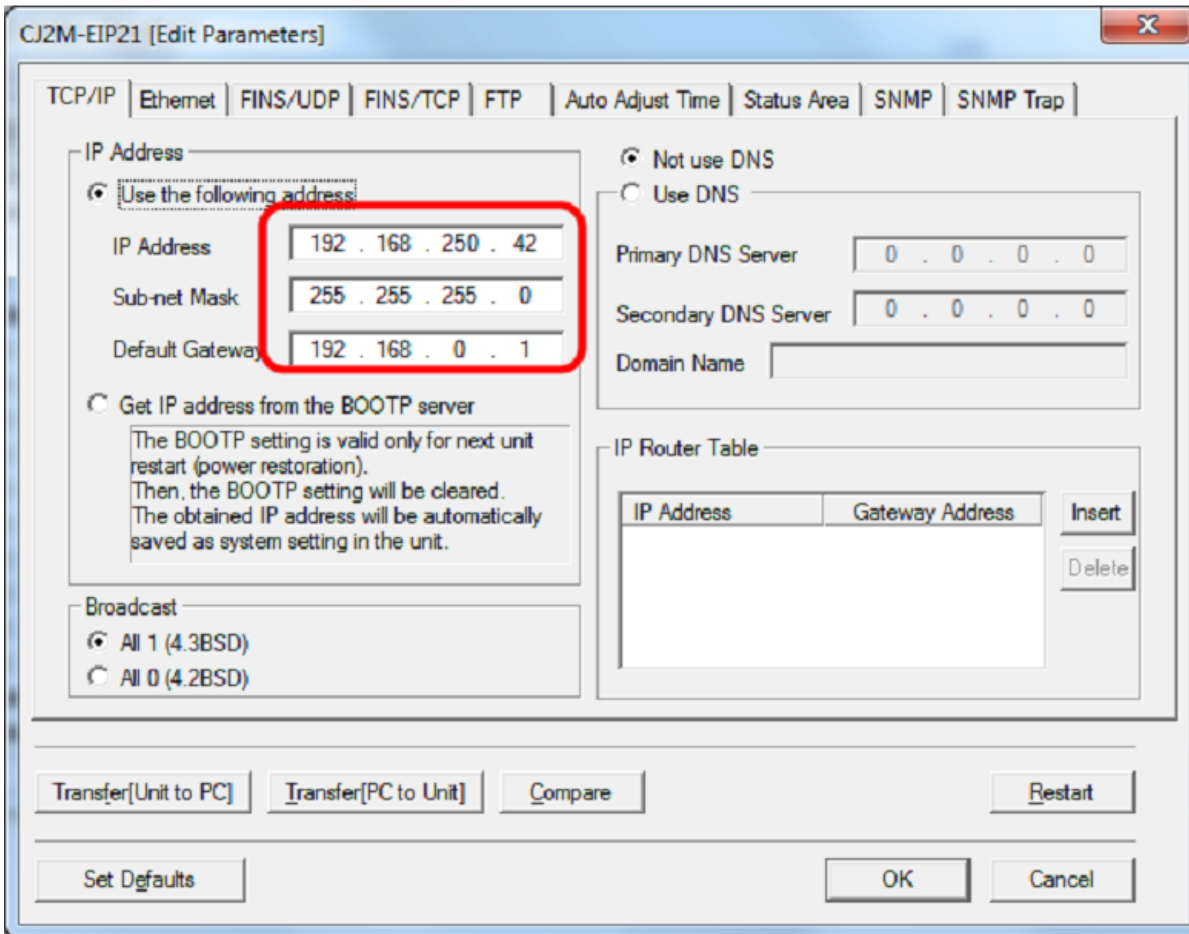
d) Confirm required ports are open.

The Talk2MConnection Checker will make sure that you can successfully reach the Talk2M servers through either UDP (port 1194) or TCP (port 443). The Talk2M Connection Checker is available at

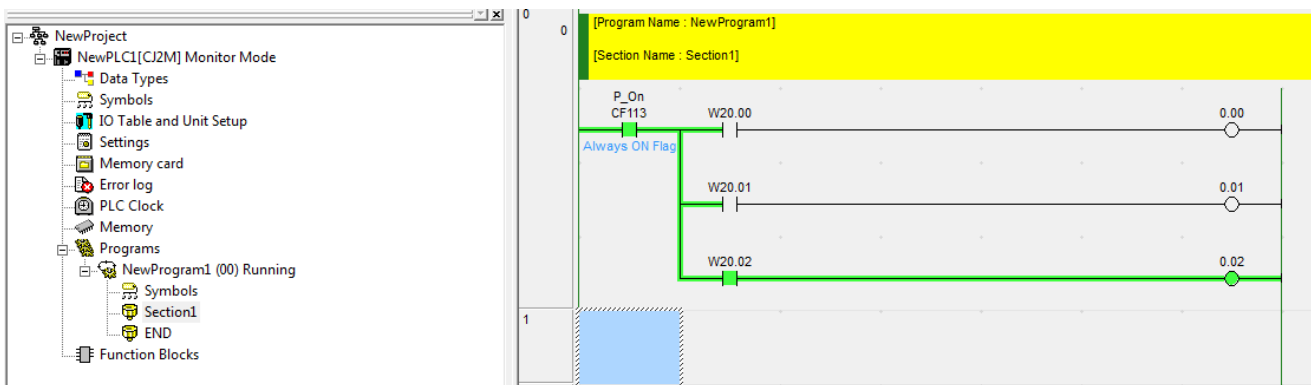
http://wiki.ewon.biz/Support/06_Knowledge_Base/Questions_and_Answers/Talk2M_connection_checker

CJ2 Setup

CJ2 Ethernet Setup:

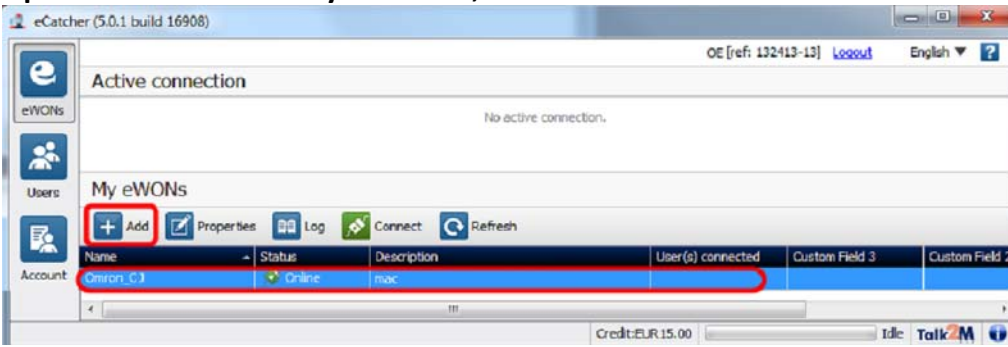


CJ2 PLC Program: (When bit W20.02 turns on an email is sent from the eWon Flexy to the user)

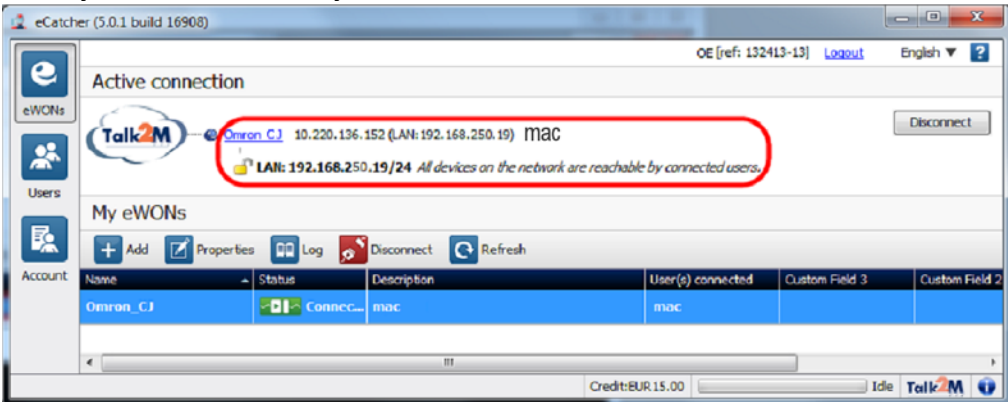


To remotely access your MAC/PLC/HMI through the eWon Flexy or Cosy

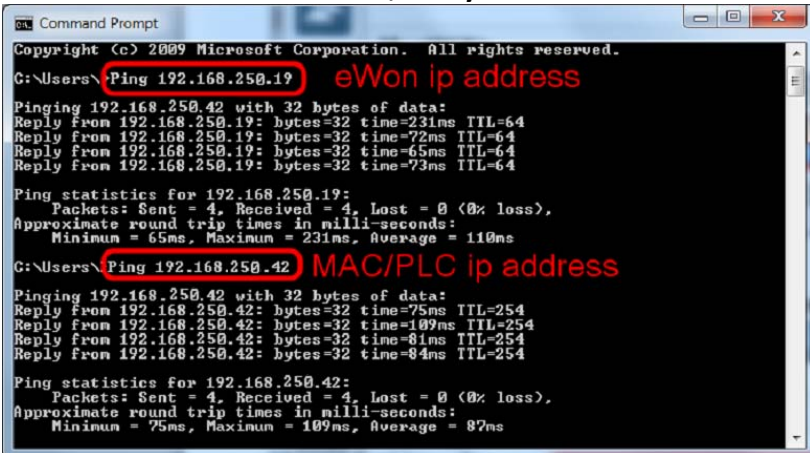
Open eCatcher and Add your eWon, then double click on the connection name



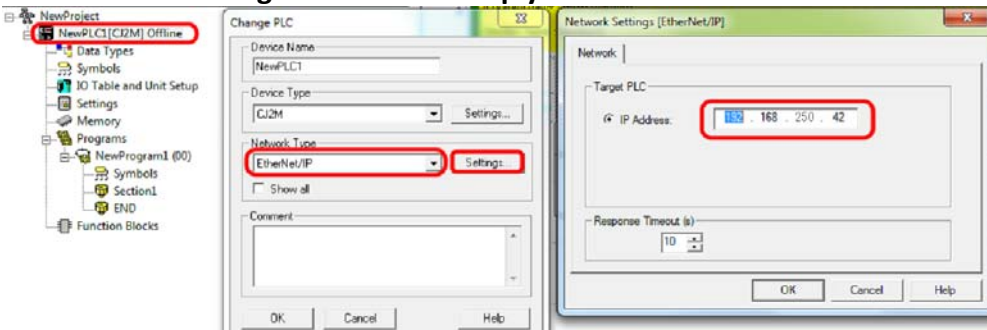
Once you are connected you will see a connection like below



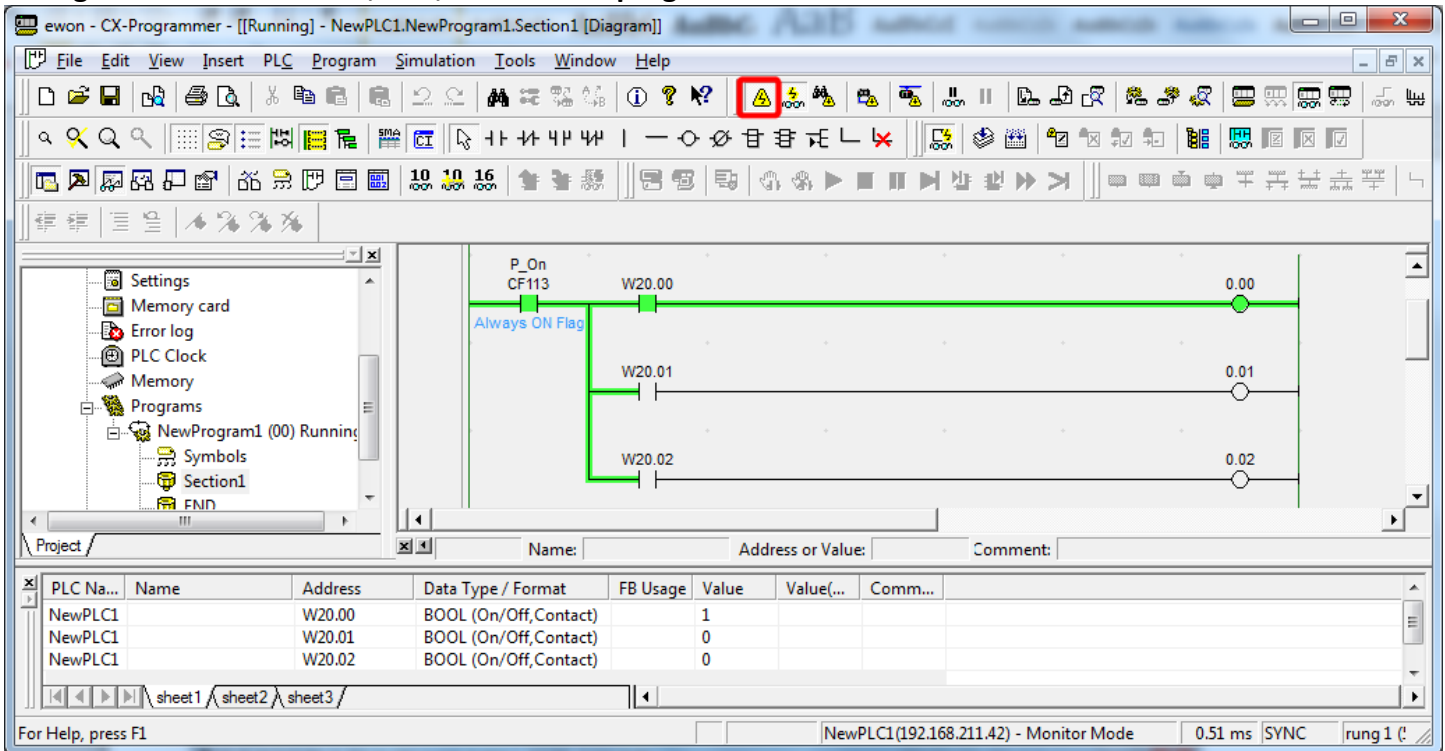
The VPN tunnel is now active, test your connection to the eWon and MAC/PLC by pinging it



Now launch CX-Programmer and setup your communications as if it was an EtherNet/IP connection

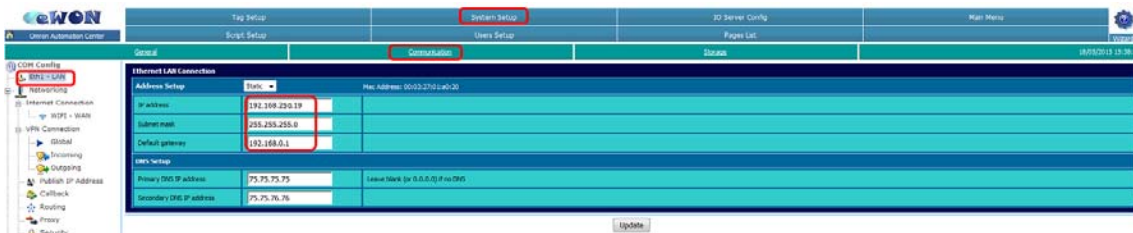


Now go online and monitor, edit, transfer the program:

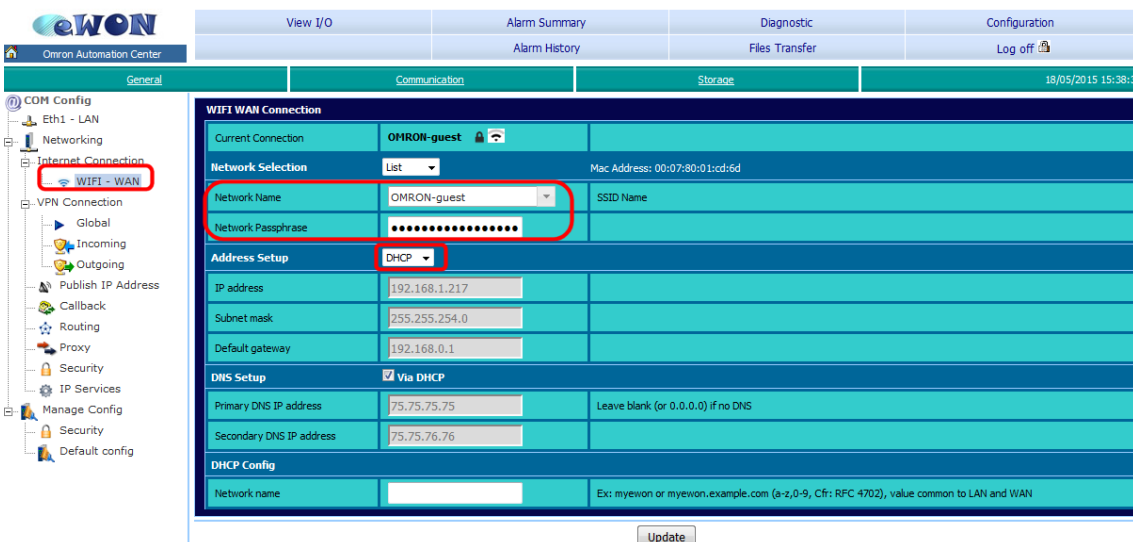


eWON Flexy Configuration Setup

System Setup:



Wifi Setup:



General/Alarms (for Email Server address):

General

Identification

eWON Identification:
 General Information:
 User defined home page: (Click for eWON default home page)
 Enable user pages security:

Alarms

Action retry interval: sec. Action occurs again if condition is still true
 Retry action: (times) Number of times the action is retried in case of error (>=1)
 Action retry interval: sec. Interval before retry in case of error (>=10)
 Email Alarm Template:
 SMS Alarm Template:

SMTP Configure Mail Transfer

SMTP Server Address: Usually something like smtp.domain.com or mail.domain.com (can be an IP address)
 SMTP Server Port: The default value is 25. It must only be changed in very special cases.
 Mail From User name: This will be used to send HTMLs, it must be compatible with your account name on the SMTP server.
 User name: Fill this only if SMTP requires authentication, otherwise leave empty.
 Password: Password for SMTP authentication (only if above field used).

I/O Server Configuration (for setting up alarms):

I/O Server Config

I/O Server & Gateway settings

COM Setup

Reply Timeout: ms. 30...3000, default: 3000
 Ethernet FMS network: 0...127, default: 0
 Ethernet FMS node: 0...254, default: 0

Topic A: Enabled
 Topic Name:
 Protocol:
 Global Device Address: No Help
 Poll Rate: ms. Default: 2000

Topic B: Enabled
 Topic Name:
 Protocol: Default: SERIAL
 Global Device Address: No Help
 Poll Rate: ms. Default: 2000

Topic C: Enabled
 Topic Name:
 Protocol: Default: SERIAL
 Global Device Address: No Help
 Poll Rate: ms. Default: 2000

Tag Setup (for setting up alarms):

Tag Setup

Identification

Tag Name:
 Tag Description:

I/O Server Setup

Server Name: Topic Name:
 Address: No Help
 Type: Force Read Only: eWON value = I/O Server Value + 0

Tag Visibility

Global settings

Published value: eWON value: 0 SERIAL; value published is unsigned 16bits for ModbusTCP and signed 32 bits for SHIP
 Modbus TCP: Enabled
 Register: Use 32-bit format (not available for booleans)
 SHIP: Enabled
 COI: Value published: 1, 3, 6, 1, 4, 1, 82H+2, 1, 3, 1, 1, 1, 4 COI (Hex value: 32767)

Instant Value

Group A: Group B: Group C: Group D:

Alarm Setup Alarm Enabled

Alarm Level Low: Alarm Level High: Value Deadband:
 Alarm Level LowLow: Alarm Level HighHigh: Leave empty if unused and Low-F unused
 Boolean Alarm Level:
 Activation Delay: sec. Auto acknowledge: (Auto ACK on RTN)
 Alarm Hint:

Alarm Setup (for setting up email address(es) used for alarms):

(the # followed by @vtext.com in the email section allows you to send a text message to a Verizon phone)

The screenshot shows the 'Alarm Notification for Tag: Alarm0' configuration page. The 'Email upon' section is highlighted with a red box. It includes a 'Short Message' checkbox (checked), an 'Email to' field containing 'ron@omron.com, 8473339938@vtext.com', and an 'Email Subject' field containing 'Panel Alarm (Input Section)'. Below this are sections for 'SMS upon', 'File FTP upon', and 'SNMP Trap upon', each with its own set of checkboxes and input fields.

I/O Monitor (for monitoring alarms or I/O):

Tag Name	Value	New Value	Description
Alarm0	0	0	W20.00 On
Alarm1	0	0	W20.01 On
Alarm2	1	1	W20.02 On

The screenshot shows the 'I/O Monitor' page with a 'Historical Logging Table'. The table has columns for 'Tag Name', 'Value', 'New Value', and 'Description'. It lists three alarms: Alarm0, Alarm1, and Alarm2. Alarm0 and Alarm1 have a value of 0, while Alarm2 has a value of 1. The description for all is 'W20.00 On', 'W20.01 On', and 'W20.02 On' respectively.

Email Sent from eWON Flexy and received in email Inbox:



Panel Alarm

To:  ron.com, 8473339938@vtext.com.

```
Event on Tagname: Alarm0
Status: ALM, Level: LVL
*** Tagname Description:
W20.00 On
```