

## MA Series

### Operating Instructions for MA-11 Safety Switches

#### KEEP THIS GUIDE FOR FUTURE REFERENCE

This information is designed to help suitably qualified personnel install and operate Omron Scientific Technologies, Inc. safety switch equipment.

Before using this product, read this guide thoroughly along with any relevant European and/or National Standards e.g. Machinery Directive 89/392/EEC and it's Amendments, Provision and Use of Work Equipment Regulations.

**Further information can be obtained from**  
Omron Scientific Technologies, Inc.

#### Description

The MA-11 safety switches are magnetically operated non-contact safety switch for use in machine guarding applications.

The non-contact operation makes the MA-11 easy to install and tolerant to misalignment, providing a simple and reliable solution to machine guard interlocking.

The MA-11 is manufactured in a robust ABS housing, and both switch and actuator are fully sealed to IP67 and suitable for use in wet or dusty environments

With correct installation, the MA-11 safety switches comply with the guidelines given in EN1088.

#### Operation

When the MA-11 safety switch and actuator are within the specified operating range (See table on page 3 for switching distances), the **Safety Contacts** will be closed and the **Auxiliary Contact** will be open.

When the actuator moves out of the operating range, the **Safety Contacts** will open and the **Auxiliary Contact** will close for indication.

The MA-11 safety switch and actuator are designed to approach each other from most angles. When the switch is closed the targets on the printed face of the switch must be aligned.

#### Applications

Machine guards where door locking is not required.  
Food and Beverage packing/filling systems  
Dairy  
Pharmaceutical  
Paper Industry  
Can Forming and Filling, (Aluminum, Steel, Plastic)  
Semiconductor Manufacture/Assembly.



#### Approvals

CE	Complies with the relevant sections of the CE marking directive.
UL	UL 508, Industrial Control Equipment

#### EUROPEAN DIRECTIVES

Machinery Directive 98/37/EC
Low Voltage Directive 73/23/EC
Electromagnetic Compatibility Directive 89/336/EC

#### EUROPEAN STANDARDS

EN292	Safety of Machinery Basic concepts, general principles for design.
EN 60204	Safety of Machinery Electrical equipment of machines.
EN 954-1	Safety of Machinery Safety related parts of controls systems
EN 1088	Interlocking devices associated with guards.
EN 60947-5-3	Safety of Machinery Specification for low voltage switchgear and control gear.

#### Declaration of Conformity

A Declaration of Conformity can be obtained from the Omron Scientific Technologies, Inc. web Site: [www.sti.com](http://www.sti.com)

## Mounting

The MA-11 safety switches can approach each other from most angles. When the guard is closed the targets on the printed face of the switch and actuator must be aligned.

Mount the switch on to the machine frame and the actuator on to the opening edge of the door. Always try to mount the switch on non-ferrous material. (*Ferrous materials may reduce the switching distance.*)

Use the tamper proof screws provided to make more secure.

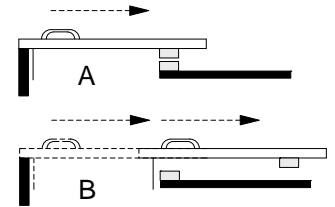
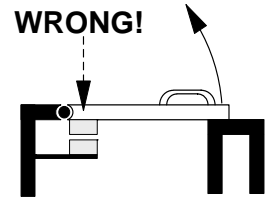
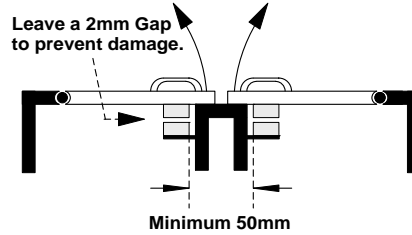
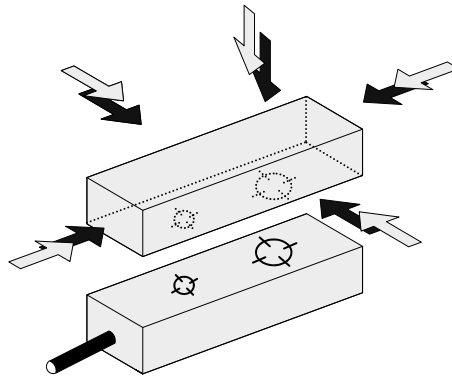
Do not use the safety switch as a door stop.

Leave a minimum of 50 mm between any adjacent switches.

EN 1088

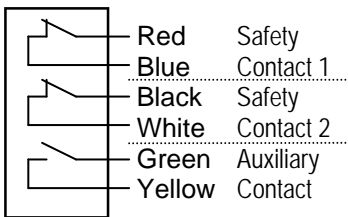
Provides some mounting suggestions, see example opposite.

When fixing the safety switch to a sliding door (A), ensure that when the door is opened (B) it is not easily accessible, helping prevent the system being overridden.

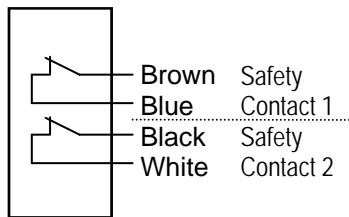


## Contacts & Connections

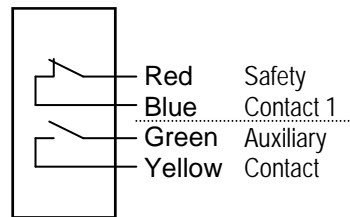
**MA-11AP21**  
**MA-11DP21**



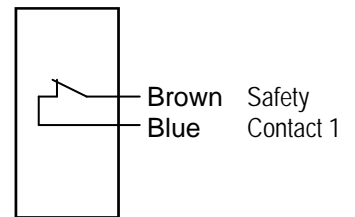
**MA-11AP20**  
**MA-11DP20**



**MA-11AP11**  
**MA-11DP11**



**MA-11AP10**  
**MA-11DP10**



**All contacts shown when actuator is in place.**

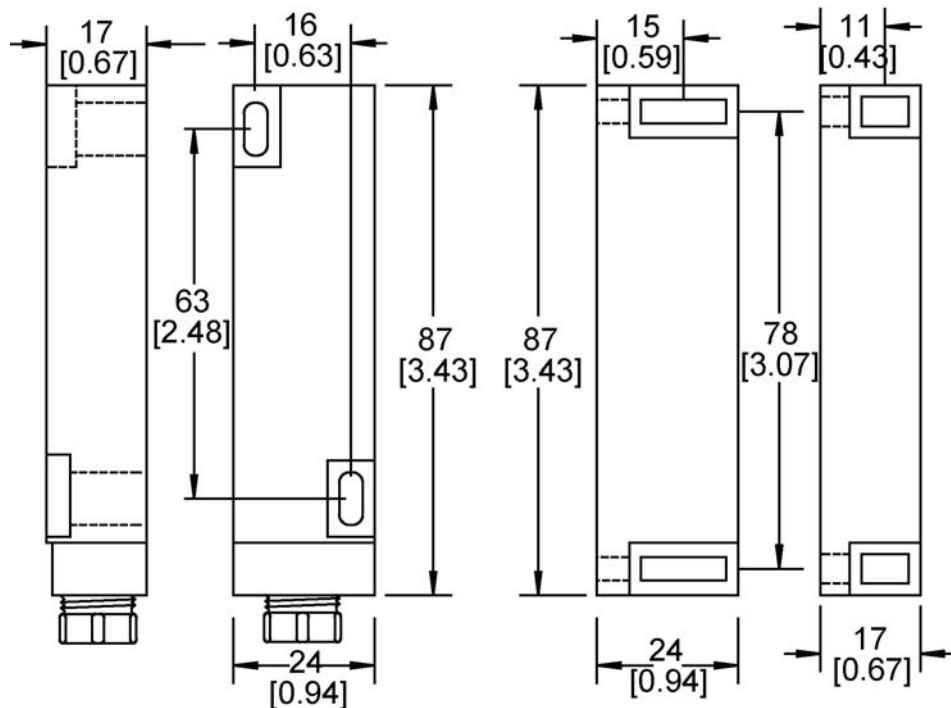
**All Safety Contacts require an external fuse.**

	Safety Contact External Fuse AC	Safety Contact External Fuse DC
<b>MA-11</b>	1.6 Amps quick blow	0.8 Amps Quick Blow

## Dimensions

### MA-11 RED ABS HOUSING

Dimensions in mm and [inches in brackets]



**SWITCH**

**ACTUATOR**

## Technical Specifications

Type		AC	DC
Contact Options	2 x N/C Safety & 1 x N/O Aux. 2 x N/C Safety 1 x N/C Safety & 1 x N/O Aux. 1 x N/C Safety	MA-11AP21 MA-11AP20 MA-11AP11 MA-11AP10	MA-11DP21 MA-11DP20 MA-11DP11 MA-11DP10
Safety Contact Rating		230Vac/2Amps	30Vdc / 1Amp Inductive/Resistive
Safety Contact Operating Distance		10mm ON / 25mm OFF	10mm ON / 25mm OFF
Safety Contact Close/Drop/Bounce		3ms / 2.1ms / 0.7ms	3ms / 2.1ms / 0.7ms
Auxiliary Contact Rating		15W / 10VA	15W / 10VA
Auxiliary Contact Operating Distance		8mm OFF / 10mm ON	8mm OFF / 10mm ON
Auxiliary Contact Close/Drop/Bounce		0.5ms / 0.3ms / 0.7ms	0.5ms / 0.3ms / 0.7ms
Internal Fuse		2Amp Fast Acting	1Amp Fast Acting
External Fuse (Customer Supplied)		1.6 Amps Fast Acting	0.8 Amp Fast Acting
IP Rating		IP67	IP67
Vibration / Shock		50—100Hz / 10g	50—100Hz / 10g
Operating Temperature		-10 to +55C	-10 to +55C
Mounting & Fixture		Target to Target	Target to Target
Connection		Pre-wired	Pre-wired
Construction		Red ABS Resin Filled	Red ABS Resin Filled

## Specification Changes

In the interest of product development, specifications are subject to change without notice.

## Note

The safety contacts of the Omron Scientific Technologies, Inc switches are described as normally closed (N/C)  
i.e. With the guard closed, actuator in place, and the machine able to be started.

**OMRON**



**OMRON SCIENTIFIC TECHNOLOGIES, INC.**

6550 Dumbarton Circle, Fremont CA 94555-3605 USA

Tel: 1/510/608-3400

Fax: 1/510/744-1442

E-mail: [sales@sti.com](mailto:sales@sti.com)

[www.sti.com](http://www.sti.com)

*European Tech Support*

Tel: +49 (0) 52 58 93 87 76

Fax: +49 (0) 52 58 93 56 90

*UK Sales Office*

Tel: +44 (0) 1395-273-209

Fax: +44 (0) 1395-276-183

**OMRON AUTOMATION AND SAFETY • THE AMERICAS HEADQUARTERS** • Chicago, IL USA • 847.843.7900 • 800.556.6766 • [www.omron247.com](http://www.omron247.com)

**OMRON CANADA, INC. • HEAD OFFICE**

Toronto, ON, Canada • 416.286.6465 • 866.986.6766 • [www.omron247.com](http://www.omron247.com)

**OMRON ELECTRONICS DE MEXICO • HEAD OFFICE**

México DF • 52.55.59.01.43.00 • 01-800-226-6766 • [mela@omron.com](mailto:mela@omron.com)

**OMRON ELECTRONICS DE MEXICO • SALES OFFICE**

Apodaca, N.L. • 52.81.11.56.99.20 • 01-800-226-6766 • [mela@omron.com](mailto:mela@omron.com)

**OMRON ELETRÔNICA DO BRASIL LTDA • HEAD OFFICE**

São Paulo, SP, Brasil • 55.11.2101.6300 • [www.omron.com.br](http://www.omron.com.br)

**OMRON ARGENTINA • SALES OFFICE**

Cono Sur • 54.11.4783.5300

**OMRON CHILE • SALES OFFICE**

Santiago • 56.9.9917.3920

**OTHER OMRON LATIN AMERICA SALES**

54.11.4783.5300

**OMRON EUROPE B.V.** • Wegalaan 67-69, NL-2132 JD, Hoofddorp, The Netherlands. • +31 (0) 23 568 13 00 • [www.industrial.omron.eu](http://www.industrial.omron.eu)

*Authorized Distributor:*

**Automation Control Systems**

- Machine Automation Controllers (MAC) • Programmable Controllers (PLC)
- Operator interfaces (HMI) • Distributed I/O • Software

**Drives & Motion Controls**

- Servo & AC Drives • Motion Controllers & Encoders

**Temperature & Process Controllers**

- Single and Multi-loop Controllers

**Sensors & Vision**

- Proximity Sensors • Photoelectric Sensors • Fiber-Optic Sensors
- Amplified Photomicrosensors • Measurement Sensors
- Ultrasonic Sensors • Vision Sensors

**Industrial Components**

- RFID/Code Readers • Relays • Pushbuttons & Indicators
- Limit and Basic Switches • Timers • Counters • Metering Devices
- Power Supplies

**Safety**

- Laser Scanners • Safety Mats • Edges and Bumpers • Programmable Safety Controllers • Light Curtains • Safety Relays • Safety Interlock Switches