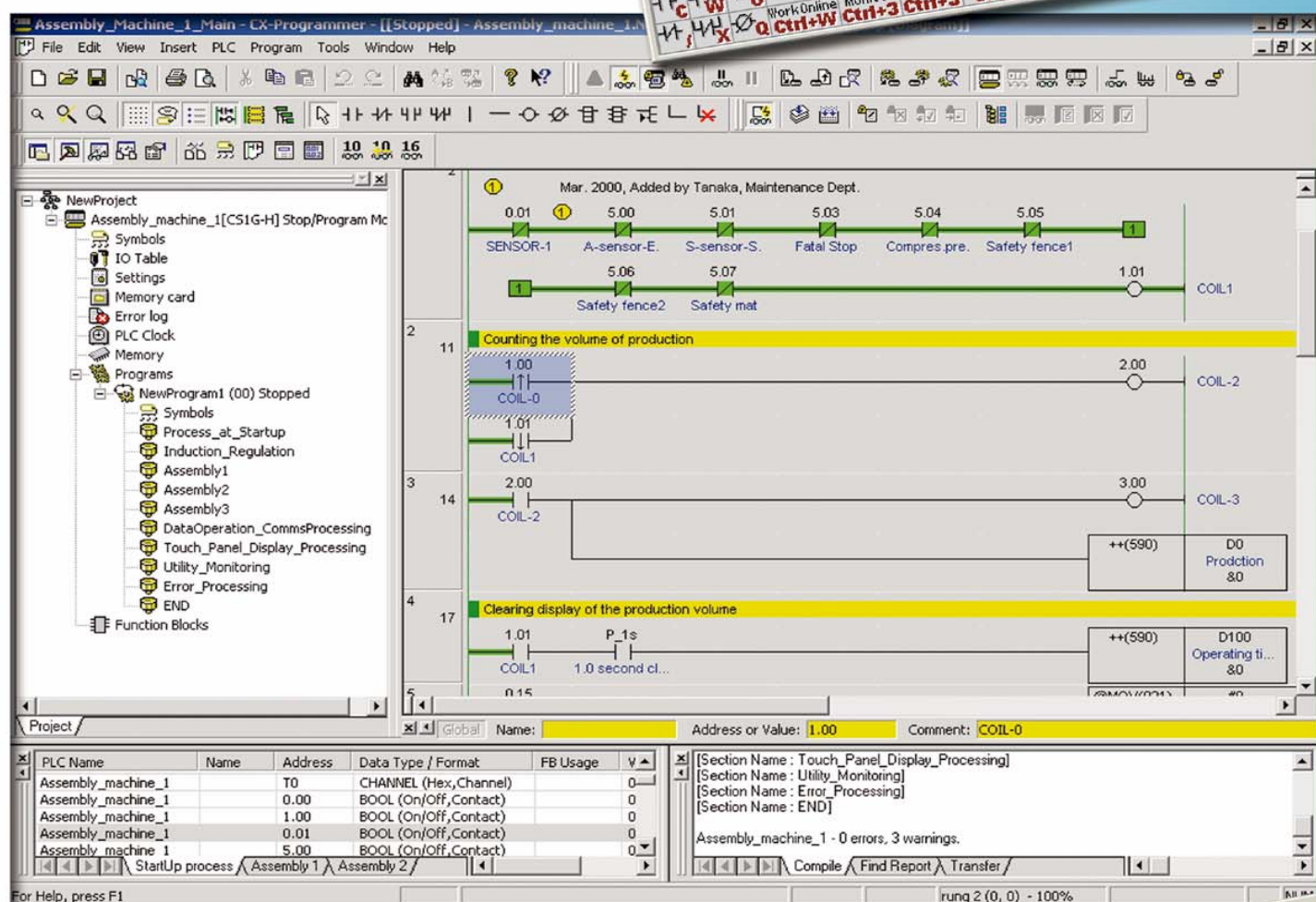


CX-Programmer

Introduction Guide



	F1	F2	F3	F4	F5	F6	F7	F8	F9	F10	F11	F12
DMRDN	Help	OpenProj	SaveProj	Print	SelectNet	Ins Row	Del Row	ProgCheck	Connect	CNT	Workspace	Ins Rung
Shift	ContextHlp		Set/Reset		BlockEdit		RungEdit	SL Edit	AdtSynEdit		AddRefTool	NextDocked
Ctrl	Help	Force Set	ForceReset	Close	Canc Force		CancAllFrc	Annotation	SymbolCmt	Focus	Monitoring	Watch
Alt										MonitorHEX		

Introduction

- Please be sure to read and understand Precautions and Introductions in *CX-Programmer Operation Manual* before using the product.
- This Guide describes the basic operation procedure of CX-Programmer. Refer to the Help or the Operation Manual of the PDF file for detailed descriptions.
- Acrobat Reader 5.0 or later is required to read the PDF files.
- You can display the PDF files from the [Start] menu on your desktop after installing the CX-Programmer.
- The screen views used in this guide may be different from the actual view, and be subject to change without notice.
- The product names, service names, function names, and logos described in this guide are trademarks or registered trademarks of their respective companies.
- The symbols (R) and TM are not marked with trademarks and registered trademarks in this guide respectively
- The product names of the other companies may be abbreviated in this guide.

Contents

Available PC

Available Device Types

Chapter 1 Installation - Startup

1. Installation	1-1
1-1. Installation of CX-Programmer	1-1
1-2. Online Registration	1-5
2. Startup of CX-Programmer	1-7
3. New Project Opening and Device Type Settings	1-8
4. Main Window	1-9
4-1. Compatible SYSWIN Key Allocation	1-10
4-2. Section	1-11
4-3. Deletion and Display of Unnecessary Windows	1-13
5. Program Creation	1-14
5-1. Entry of Normally Open Contact	1-15
5-2. Entry of Coil	1-16
5-3. Edit of Symbol Comment	1-18
5-4. Entry of Rung Comment	1-19
5-5. Entry of Normally Closed Contact	1-19
5-6. Entry of Attached Comments	1-20
5-7. Entry of Differential Contact...Up	1-21
5-8. Entry of Differential Contact...Down	1-21
5-9. Entry of Vertical...Up	1-22
5-10. Entry of Vertical...Down	1-22
5-11. Entry of Advanced Instructions 1 - Entry of Strings	1-23
5-12. Entry of Advanced Instructions 1 - Useful Functions	1-24
5-13. Entry of Auxiliary Relay - 1.0 Second Clock Pulse Bit	1-25
5-14. Entry of Advanced Instructions 2 - Entry of Differential	1-26
5-15. Entry of OR Rung	1-27
5-16. Entry of Advanced Instructions 3 - Entry by Fun No.	1-28
5-17. Entry of Timer Instructions	1-29
5-18. Entry of Counter Instructions	1-30
5-19. Edit of Rungs...Copy & Paste	1-31
5-20. Entry of END Instruction	1-31

Chapter 2 Online Operation

1. Program Error Check (Compile)	2-1
2. Going Online	2-2
3. Monitoring	2-3
4. Monitoring - 2 Monitoring Many Locations in Program at Once	2-4
5. Monitoring - 3 Monitoring in Hex	2-4
6. Monitoring - 4 Watch Window	2-5
7. Monitoring - 5 Present Value Change and Binary Monitoring in Watch Window	2-6
8. Useful Functions of Watch Window	2-7
9. Monitoring - 6 Watch Window - 2	2-8
10. Monitoring - 7 Rung-wrap of Long Rung on Display	2-9
11. Monitoring - 8 Differential Monitor	2-10
12. Force On/Off	2-11
13. Displaying List of Forced-on/off Bits	2-11
14. Changing Set Value of Timer	2-12
15. Changing Present Value of Timer	2-12
16. Find Function - 1 Find from Address Reference Tool	2-13
17. Find Function - 2 Retrace Find of Ladders	2-14
18. Find Function - 3 Find by Keyword in Comment	2-16
19. Find Function - 4 Go To Rung Comment	2-17
20. Find Function - 5 Find Bit Addresses	2-18
21. Online Edit	2-19
Useful Functions	Appendix

Available PC

Hardware Requirements

Item \ OS	Windows 2000 Service Pack 2 or later /Windows XP	Windows Vista *1
PC	IBM PC/AT Compatible	IBM PC/AT or compatible with a processor recommended by Microsoft.
CPU	DOS/V (IBM AT compatible) computer with a Pentium II 333 MHz processor or higher. Pentium III 1GHz or higher is recommended.	Processor recommended by Microsoft. 1 GB or higher is recommended.
Memory *2	256MB or higher required. 512MB or higher is recommended.	512MB or higher required. 1GB or higher is recommended.
Hard disk space	550MB or more free space	
Display	800X600 SVGA or grater	
CD-ROM /DVD-ROM drive	At least one drive	
Communications Port	At least one USB Port or RS-232C Port	

*1: The following restrictions apply when CX-Programmer is used with Windows Vista.

Help files with an HLP file name extension cannot be accessed. These help files can be accessed if the program distributed by Microsoft for Windows Vista is installed. Refer to the Microsoft homepage listed below or contact Microsoft for details on installing the file. The download page is automatically displayed if an HLP help file is opened while the user is connected to the Internet.
<http://support.microsoft.com/kb/917607/en-us>

*2: Required memory (RAM) size depends on the size of your programs to be created. If the required memory (RAM) size is larger than your PC's memory (RAM) size, operation of CX-Programmer might be slowed down.

For details of PC in which CX-One can be installed, refer to "CX-One Setup Manual", Section 2 "Installation and Uninstallation".

Available Device Types

CX-Programmer supports the following PLC (Programmable Logic Controller) types.

Series	CPU Unit Type
CS	CS1H-CPU67/66/65/64/63 (-V1) CS1G-CPU45/44/43/42 (-V1) CS1G-CPU45H/44H/43H/42H CS1H-CPU67H/66H/65H/64H/63H CS1D-CPU67H/65H/CPU67S/65S/44S/42S
CJ	CJ2H-CPU68-EIP/67-EIP/66-EIP/65-EIP/64-EIP CJ1G-CPU45/44 CJ1M-CPU23/22/21/13/12/11 CJ1G- CPU45H/44H/43H/42H CJ1H-CPU66H/65H CJ1H-CPU67H-R/66H-R/65H-R/64H-R
C1000H	C1000H-CPU01 (-V1)
C2000H	C2000H-CPU01 (-V1) (Simplex system only)
C200H	C200H-CPU01/02/03/11/21/22/23/31
C200HX C200HG C200HE	C200HX-CPU34/44/54/64 C200HG-CPU33/43/53/63 C200HE-CPU11/32/42
C200HX-Z C200HG-Z C200HE-Z	C200HX-CPU34-Z/CPU44-Z/CPU54-Z/CPU64-Z/CPU65-Z/CPU85-Z C200HG-CPU33-Z/CPU43-Z/CPU53-Z/CPU63-Z C200HE-CPU11-Z/CPU32-Z/CPU42-Z
C200HS	C200HS-CPU01/03/21/23/31/33
CP1H/CP1L	CP1H-X□/XA□/Y□ CP1L-M□/L□
CPM2□(*1)	CPM2A-20CD/30CD/40CD/60CD CPM2C-10CD/10C1D/20CD/20C1D
CPM2C-S1□ (*1)	CPM2C-S100C/110C CPM2C-S110C-DRT
CPM1/CPM1A (*1)	CPM1(A)-10CDR/20CDR/30CDR/40CDR (-V1)
CQM1H	CQM1H-CPU11/21/51/61
CQM1	CQM1-CPU11/21/41/42/43/44/45
CV1000 (*2)	CV1000-CPU01 (-V1)
CV2000 (*2)	CV2000-CPU01 (-V1)
CV500 (*2)	CV500-CPU01 (-V1)
CVM1	CVM1-CPU01/11 (-V1) (-V2)/CPU21-V2
IDSC	IDSC-C1DR-A/C1DT-A
SRM1 (*1)	SRM1-C01/C02 (-V1) (-V2)
SYSMAC Board, or SYSMAC CS1 Board (Internal connection of a PC with the SYSMAC board that is built-in the PC where CX-Programmer is installed)	C200PC-ISA01 (C200HG-CPU43 *3) C200PC-ISA02-DRM (C200HG-CPU43 *3) C200PC-ISA02-SRM (C200HG-CPU43 *3) C200PC-ISA03 (C200HG-CPU43 *3) C200PC-ISA03-DRM (C200HG-CPU43 *3) C200PC-ISA03-SRM (C200HG-CPU43 *3) C200PC-ISA13-DRM (C200HX-CPU64 *3) C200PC-ISA13-SRM (C200HX-CPU64 *3) CS1PC-PCI01-DRM (CS1G-CPU45 *4) CS1PC-PCI01H-DRM (CS1G-CPU45H *4)
FQM1 Series Flexible Motion Controller	FQM1-CM001/MMA21 / MMP21

*1: For WS02-CXPC2-V□ (one license (limited to micro PLCs)), only these PLC types are available.

*2: CX-Programmer does not support SFC.

*3: To connect with SYSMAC Board, specify the PLC types in parentheses. Only when selecting these PLC types, you can select "SYSMAC Board" as a network type.

*4: To connect with SYSMAC CS1 Board, specify PLC types in parentheses. Only when selecting these PLC types, you can select "CS1 Board" as a network type.

Chapter 1

Installation to Startup

CX-Programmer



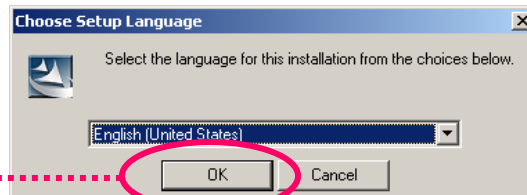
1. Installation procedure of CX-Programmer

Before installation of CX-Programmer, you must:

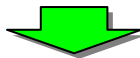
- terminate all Windows programs, and
- uninstall older version of CX-Programmer and peripheral tools (such as CX-Protocol) if they are already installed.
- Installation takes about 5 to 20 minutes depending on your PC. (5 minutes for a PC with CPU: Celeron2.2GHz, main memory: 512MB, and CD-ROM drive: 48x)
- To change/modify/delete CX-Programmer after installation, refer to the PDF manual "CX-Programmer Operation Manual", Chapter 2 "Installation and Uninstallation".

1-1. Installing CX-Programmer

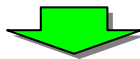
Insert the CX-Programmer installation disk (CD-ROM) to your PC's CD-ROM drive. [Choose Setup Language] dialog box is displayed. Default language of the OS on your PC is automatically selected. Check if the language is appropriate, then click [OK].



Click [OK].



CX-Programmer splash screen is displayed, then CX-Programmer installation is started.



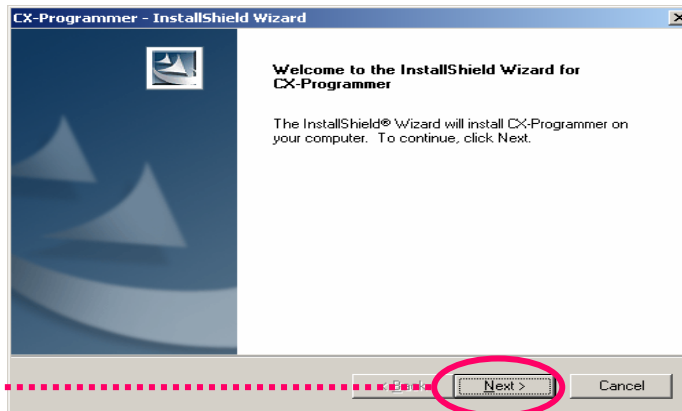
Installation
to Startup

Opening a
new project

Device type
settings

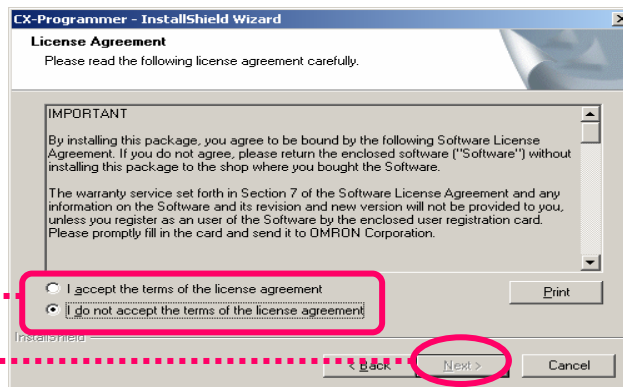
Creating a
program

CX-Programmer setup wizard is started.



Click [Next].

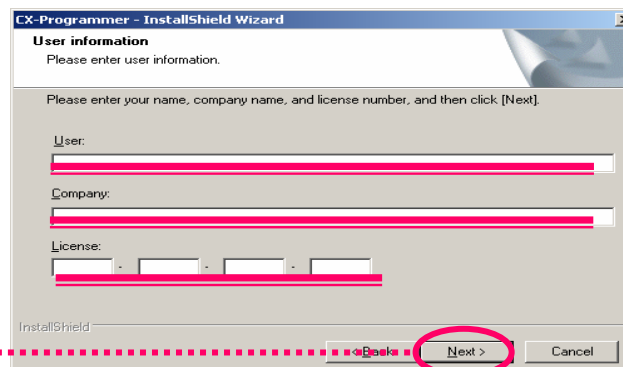
[License Agreement] dialog box is displayed.
Read the software license agreement carefully. If you agree with all items, select [I accept the terms of the license agreement] radio button and click [Next] button.



Select the radio button.

Click [Next].

[User information] dialog box is displayed.



Enter [User], [Company],
[License] (product serial
number of CX-
Programmer).

Click [Next].

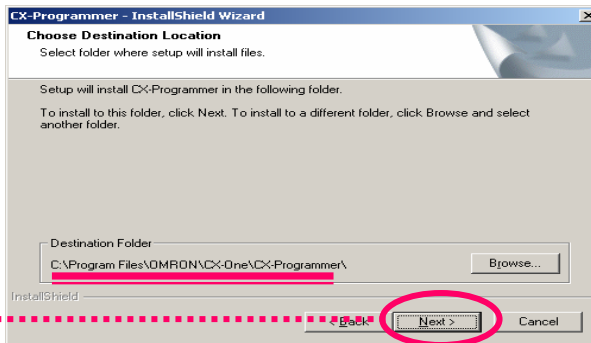
Installation
to Startup

Opening a
new project

Device type
settings

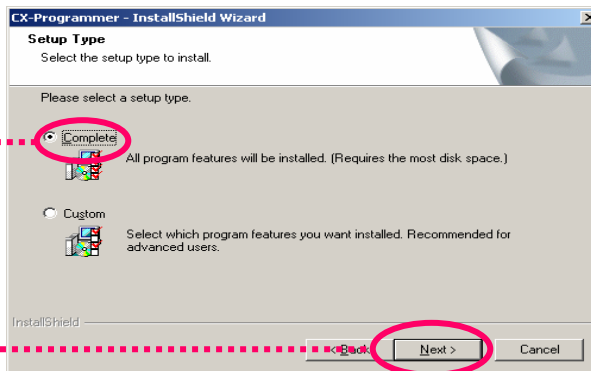
Creating a
program

[Choose Destination Location] dialog box is displayed.



Select an installation
folder, then click [Next].

[Setup Type] dialog box is displayed.

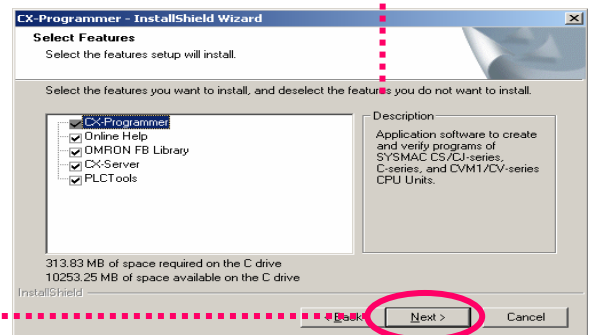


Select the radio button
[Complete].

Click [Next].

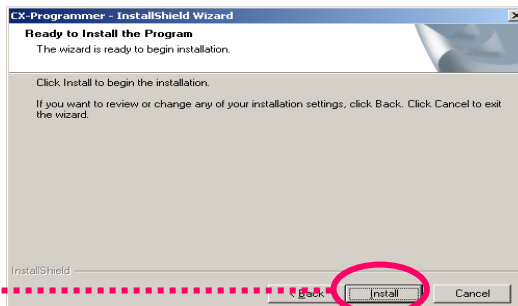
By selecting [Custom], you can
individually select and install a
peripheral tool.

Read the message and
click [Next].



If OMRON FB Library is selected, [Choose Destination Location] dialog box of OMRON FB Library is displayed.

[Ready to Install the Program] dialog box is displayed.



Click [Install].

CX-Programmer installation is started.

Installation
to Startup



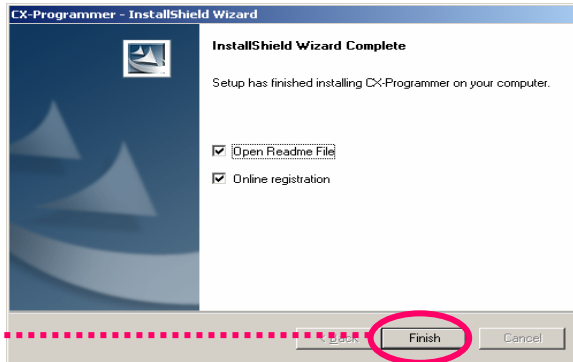
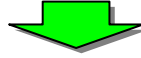
Opening a
new project



Device type
settings



Creating a
program



Click [Finish].

A dialog box (left) is displayed.
Click [Finish] button to finish the
installation wizard.
Now installation is completed.

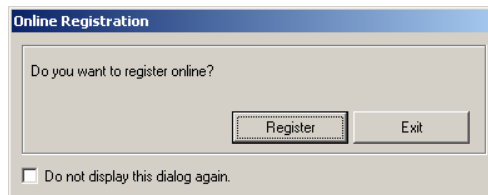
By checking [Online registration]
check box, you can proceed to
online registration.



1-2. Online Registration

If you have Internet environment for the installed PC, you can perform online user registration.

After installation is completed, [Online Registration] dialog box is displayed.



If you click [Register] button, your Web browser is started to connect to “Omron’s CX-One Web site”.(*1) (*2)

*1: If you click [Exit] button to cancel online registration, [Online Registration] dialog box is displayed every time CX-Programmer is started.

*2: If you do not have Internet environment, or you do not want to register online, fill and send the user registration card that comes with the product.

MEMO

Use to record license No. etc.

Installation
to Startup



Opening a
new project



Device type
settings

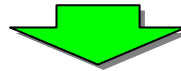
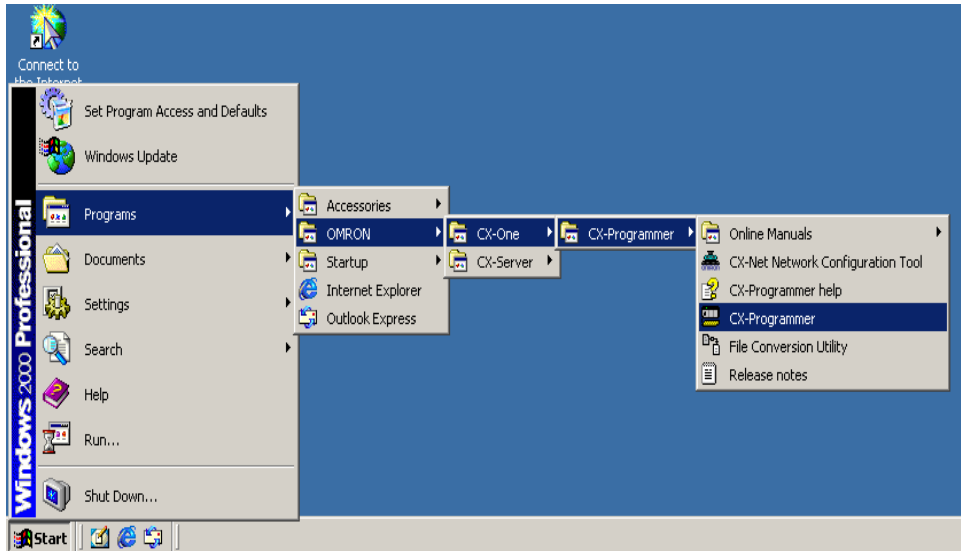


Creating a
program

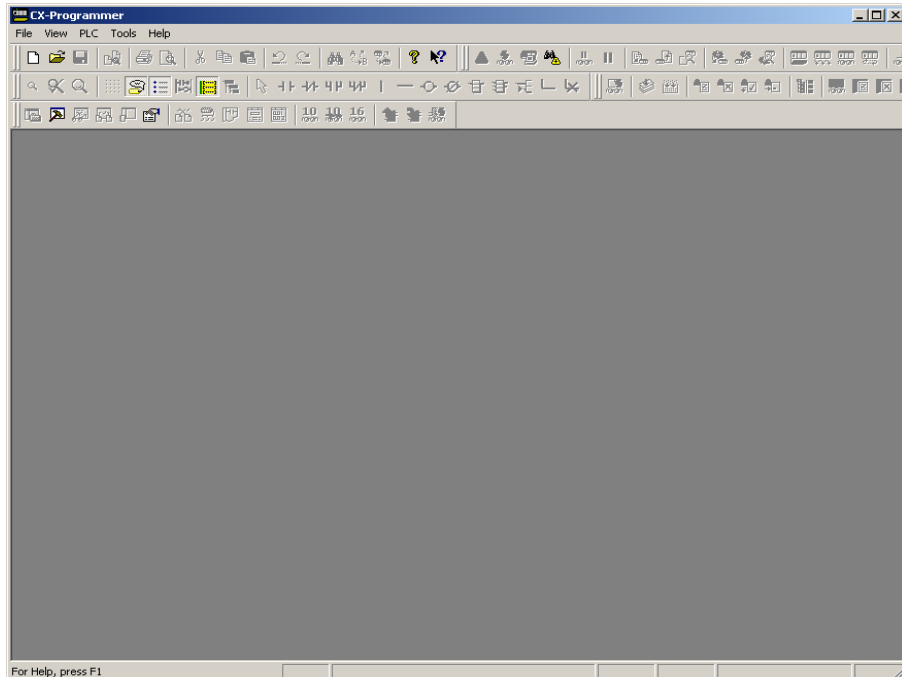
Windows task bar

[Start]
↓
[Programs]
↓
[OMRON]
↓
[CX-One]
↓
[CX-Programmer]
↓
[CX-Programmer]

2. Startup of CX-Programmer



The initial screen when starting up CX-Programmer is displayed.



Installation
to Startup

Opening a
new project

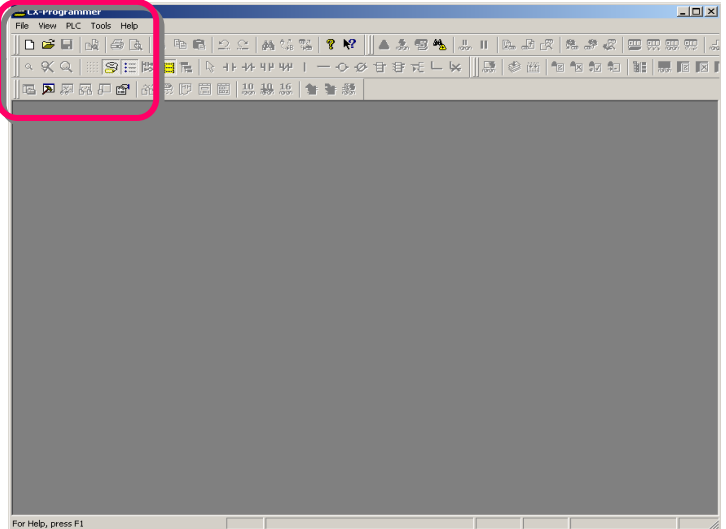
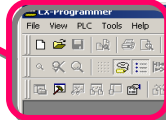
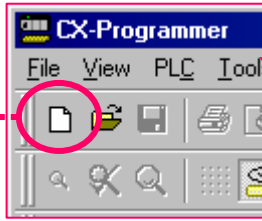
Device type
settings

Creating a
program

3. New Project Opening and Device Type Settings

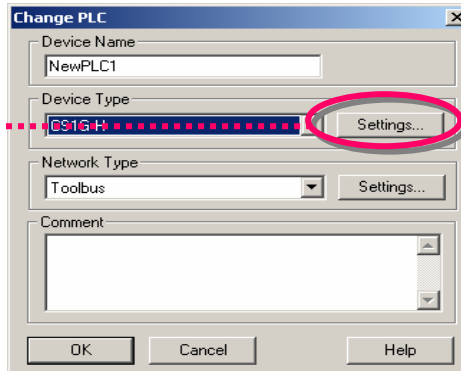
Click the toolbar button [New] in CX-Programmer.

Click

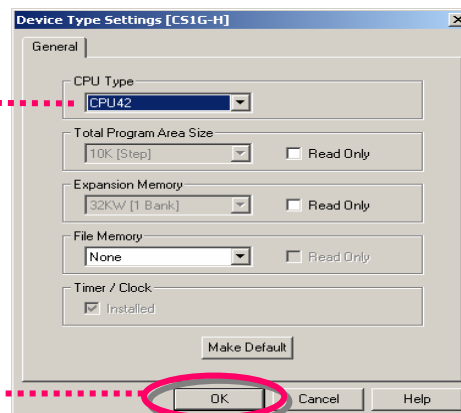


Click the left mouse
button.

Settings...



Click the left mouse
button on the "Settings"
button to show the
[Device Type Settings]
dialog.



Click the left mouse button on
[CPU Type] and select a CPU type.

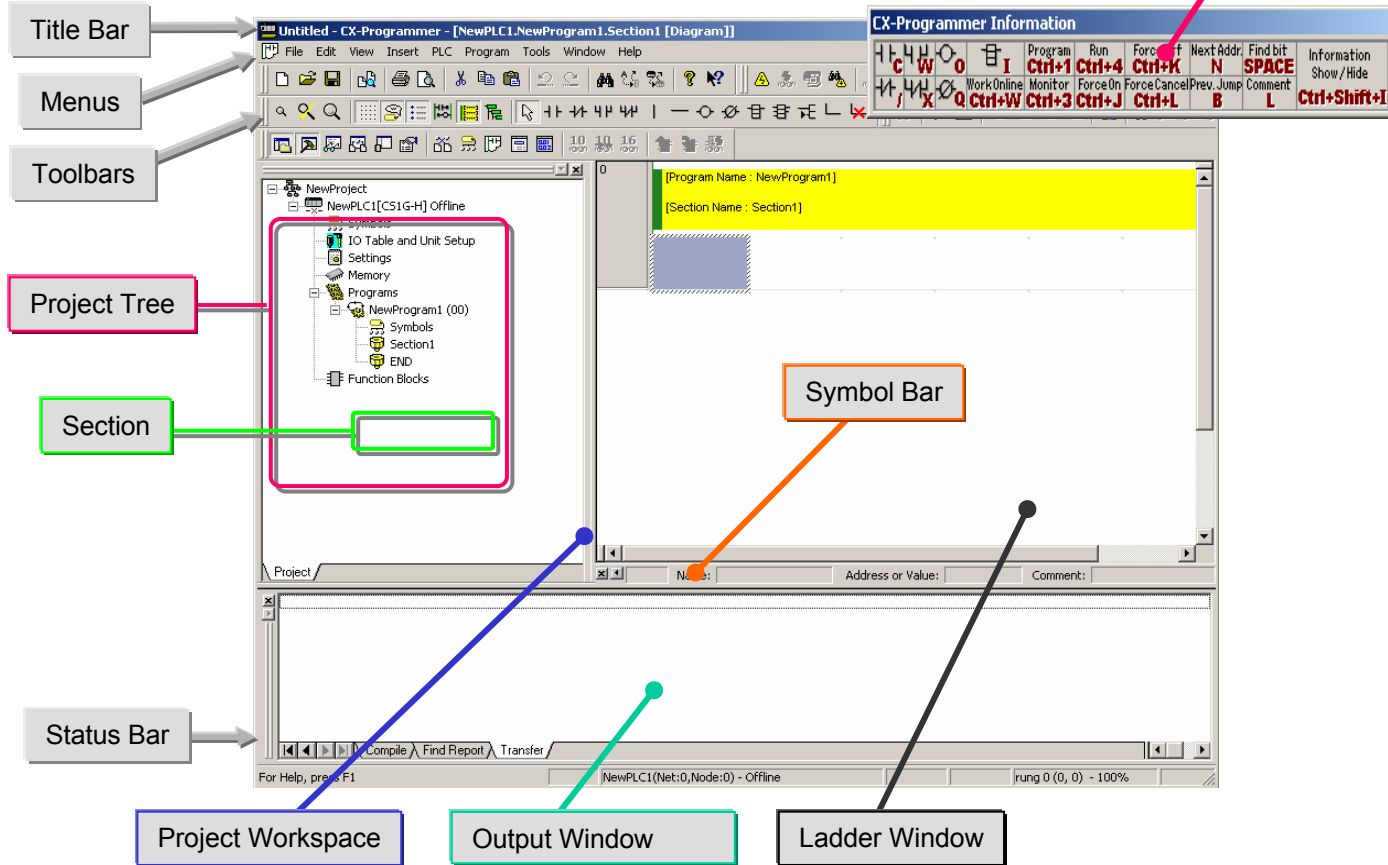
Click [OK] to decide the
selected CPU type.

OK

4. Main Window

Each function of the main window is explained here.

Information Window



Name	Contents/Function
Title Bar	Shows the file name of saved data created in CX-Programmer.
Menus	Enable you to select menu items.
Toolbars	Enable you to select functions by clicking icons. Select [View] -> [Toolbars], and you can select toolbars to be displayed. Dragging toolbars enables you to change the display positions by the group.
Section	Enables you to divide one program into a given number of blocks. Each can be created and displayed.
Project Workspace Project Tree	Controls programs and data. Enables you to copy data by the element by executing Drag and Drop between different projects or within a project.
Ladder Window	A screen for creating and editing a ladder program.
Output Window	<ul style="list-style-type: none"> Shows error information in compiling (error check). Shows the results of searching for contacts/coils in the list form. Shows error details when errors occurred while loading a project file.
Status Bar	Shows information such as a PLC name, online/offline, location of an active cell.
Information Window	Displays a small window to show the basic shortcut keys used in CX-Programmer. Select [View] -> [Information Window] to show or hide the Information window.
Symbol Bar	Displays the name, address or value, and comment of the symbol presently selected by the cursor.

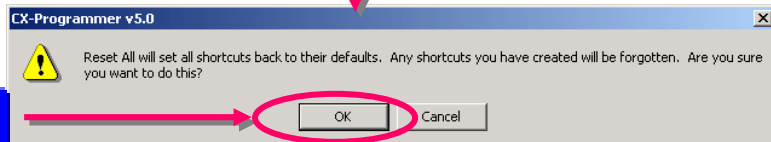
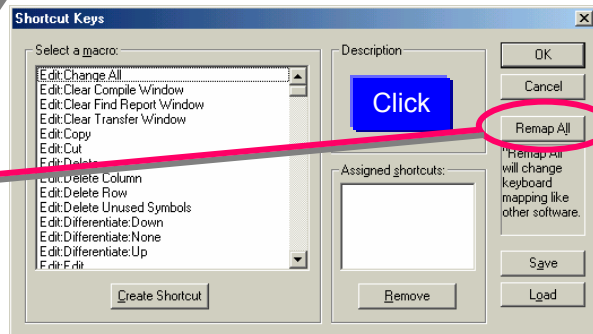
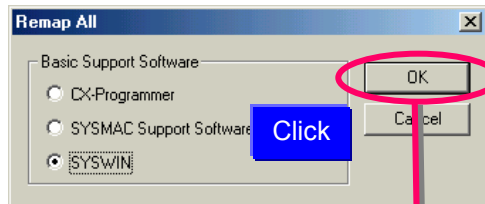
4-1. Compatible SYSWIN Key Allocation

The keyboard mapping function allows the function keys to operate like SYSWIN.

Select the [Tools] -> [Keyboard Mapping...] menu.



Function keys will be available for entering ladder programs.

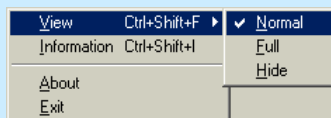


After the above operations, the key allocations will be changed and become compatible with SYSWIN.

When SYSWIN key allocation is selected, a key operation guide will be displayed at the bottom of the display.



Click the icon shown in the task bar on the right-bottom of the display.



Display in Normal View

OMRON	F1	F2	F3	F4	F5	F6	F7	F8	F9	F10	F11	F12
	Help	-1 / -	-1 / -	--	I	-1 / H	-1 / H	Inst	TIM	CNT	Workspace	Ins Rung

When **Shift** is pressed

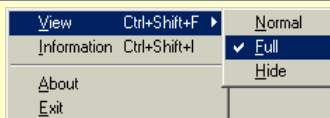
OMRON	F1	F2	F3	F4	F5	F6	F7	F8	F9	F10	F11	F12
Shift	ContextHlp	OpenProj	SaveProj	Print	SelectNet	Ins Row	Del Row	ProgCheck	Connect		AddRefTool	NextDocked

When **Ctrl** is pressed

OMRON	F1	F2	F3	F4	F5	F6	F7	F8	F9	F10	F11	F12
Ctrl	Help		Set/Reset		BlockEdit		RungEdit	SL Edit	AdtSymEdit	Focus	Monitoring	Watch

When **Alt** is pressed

OMRON	F1	F2	F3	F4	F5	F6	F7	F8	F9	F10	F11	F12
Alt		Force Set	ForceReset	Close	Canc Force		CancAllFrc	Annotation	SymbolCmt	MonitorHEX		



Display in Full View

OMRON	F1	F2	F3	F4	F5	F6	F7	F8	F9	F10	F11	F12
	Help	-1 / -	-1 / -	--	I	-1 / H	-1 / H	Inst	TIM	CNT	Workspace	Ins Rung
Shift	ContextHlp	OpenProj	SaveProj	Print	SelectNet	Ins Row	Del Row	ProgCheck	Connect		AddRefTool	NextDocked
Ctrl	Help		Set/Reset		BlockEdit		RungEdit	SL Edit	AdtSymEdit	Focus	Monitoring	Watch
Alt		Force Set	ForceReset	Close	Canc Force		CancAllFrc	Annotation	SymbolCmt	MonitorHEX		

4-2. Section

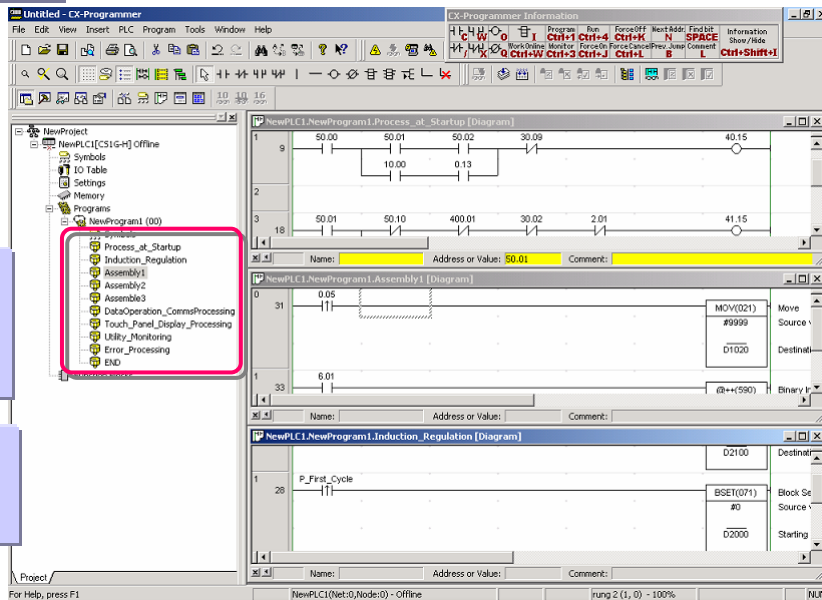
Section is a function to create/display a “block” of a program divided per function. It improves not only the visibility of a program but also the development productivity by reusing components if the program consists of similar controls, because copy and paste on the program tree are available. Moreover, program upload by section is possible and it enables you to do online operation smoothly.

Example

Giving names indicating the contents of processing or controls is possible.

Changing the order of sections and copy & paste are possible by drag & drop with a mouse.

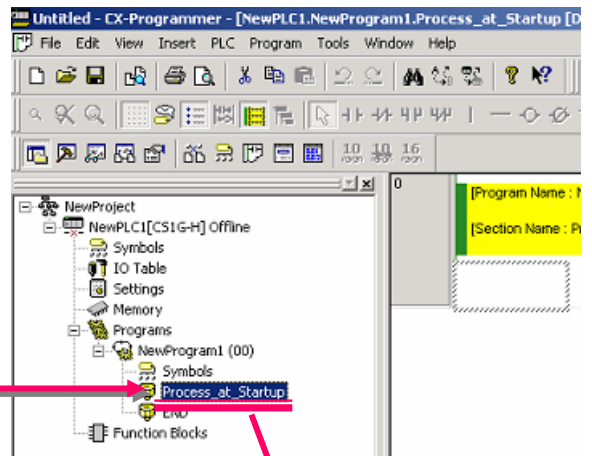
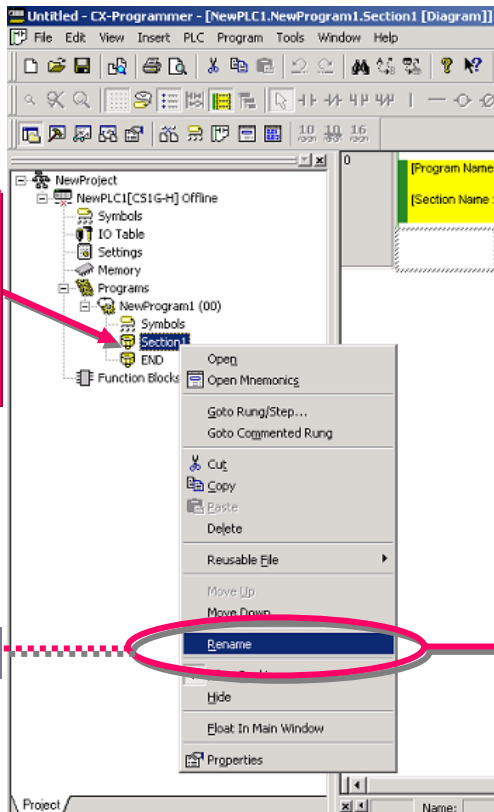
There is no limit on the number of sections per program.



Changing a section name

Click the right button of the mouse on the section whose name is to be changed.

Select [Rename].

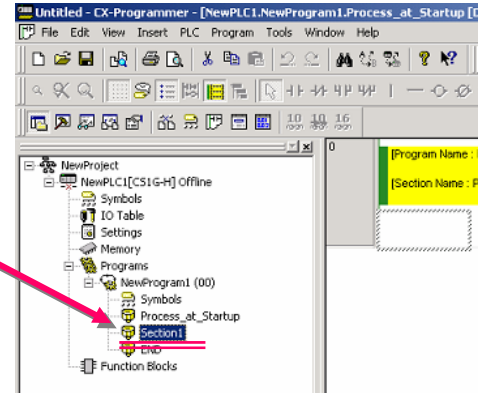
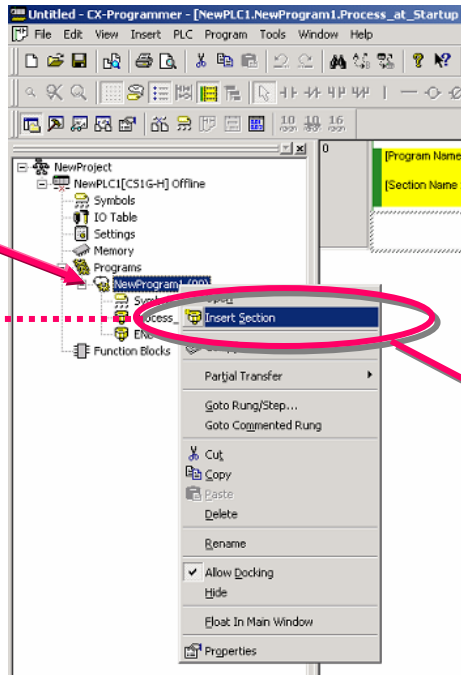


Enter a given name.

Addition of a section

Click the right mouse button on [NewProgram1].

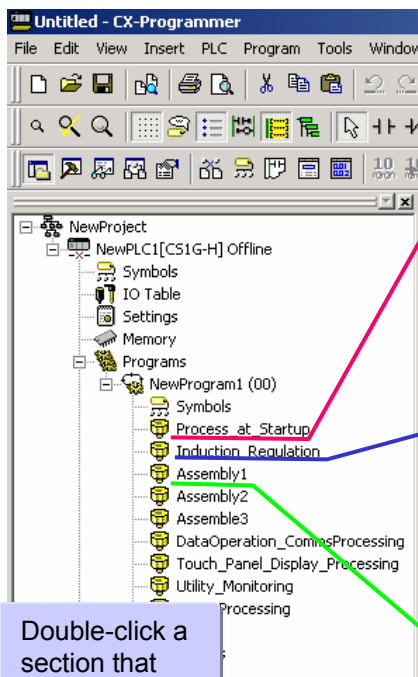
Select [Insert Section].



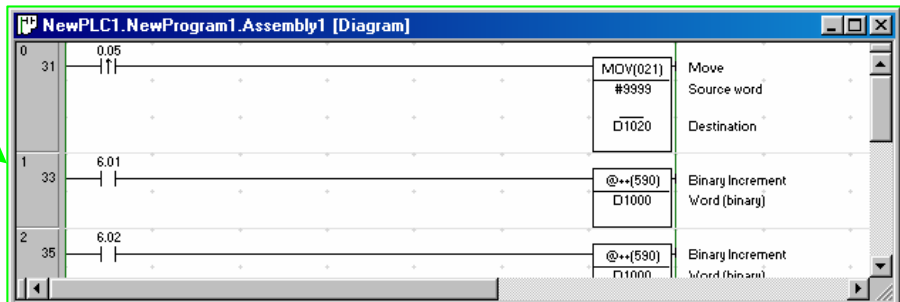
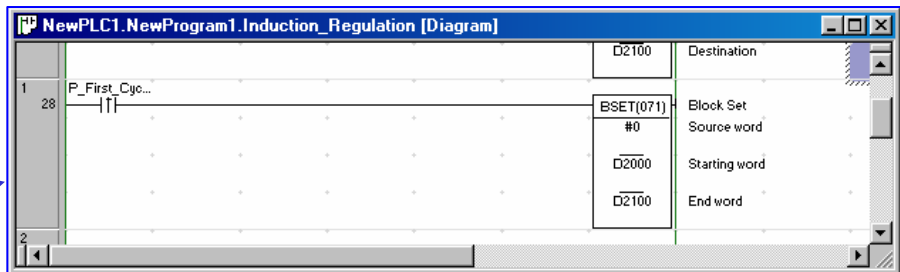
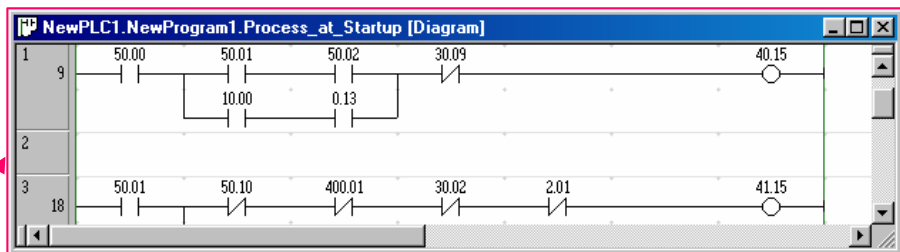
Perform the same operation as the previous page to name the inserted section.

It is possible to go to each section (a ladder block) from a section list.

As checking the global image (control flow) of a program on the section list, you can go to a specified section.

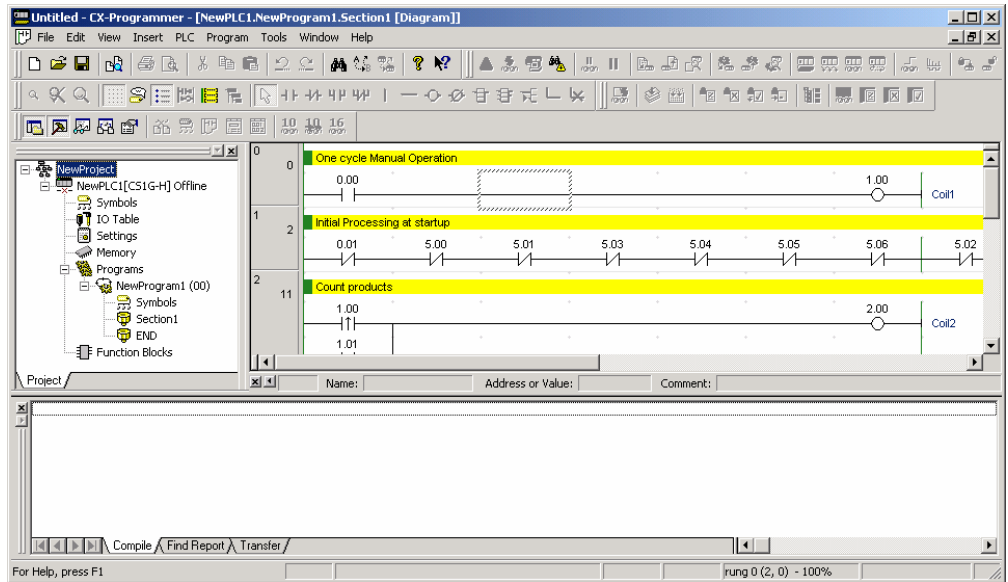


Double-click a section that you want to check its ladder.



4-3. Deletion and Display of Unnecessary Windows

Normal screen

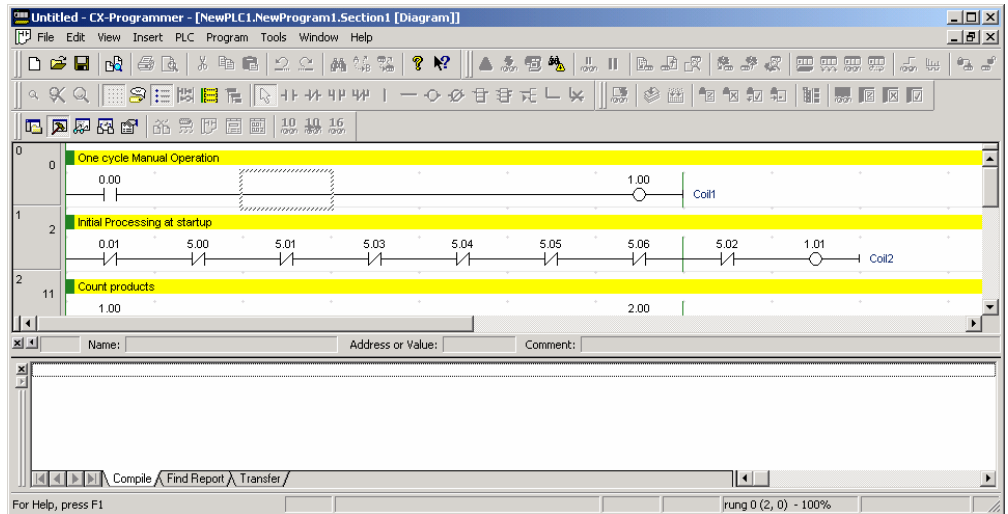


To delete Project Workspace,

Press from a keyboard

Alt + 1

Press [Alt]+[1] to show Project Workspace again.

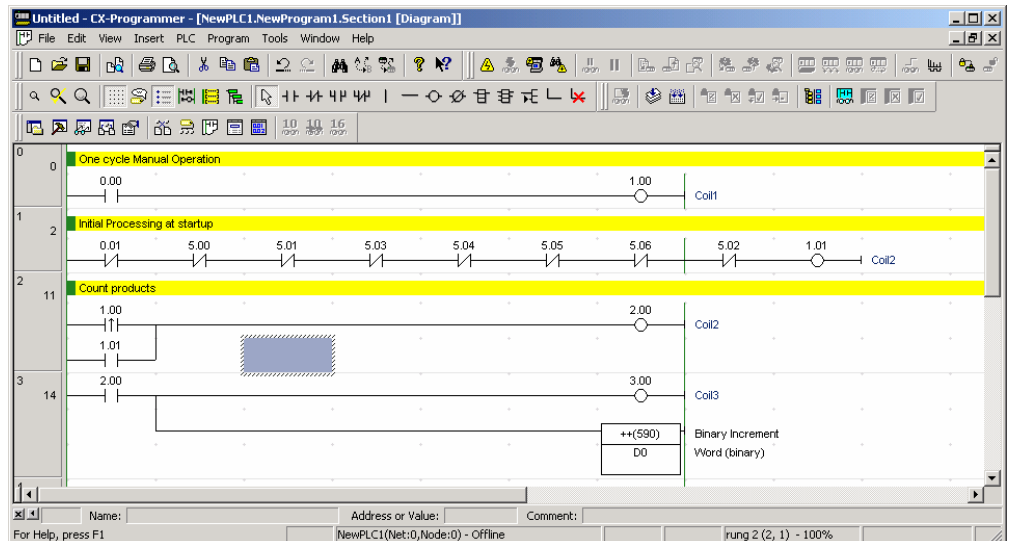


To delete Output Window,

Press from a keyboard [ESC] or

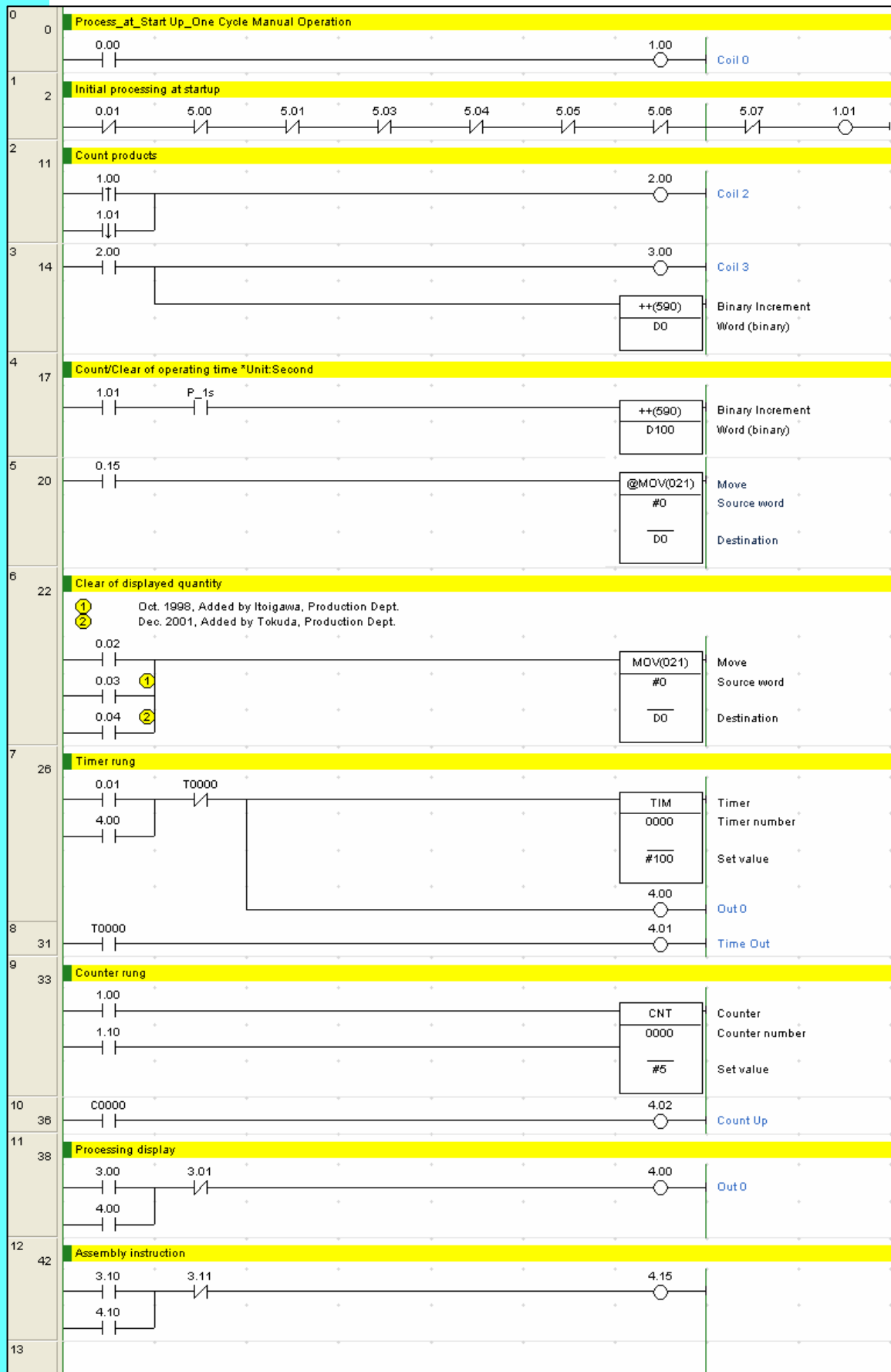
Alt + 2

Press [Alt]+[2] to show Output Window again.

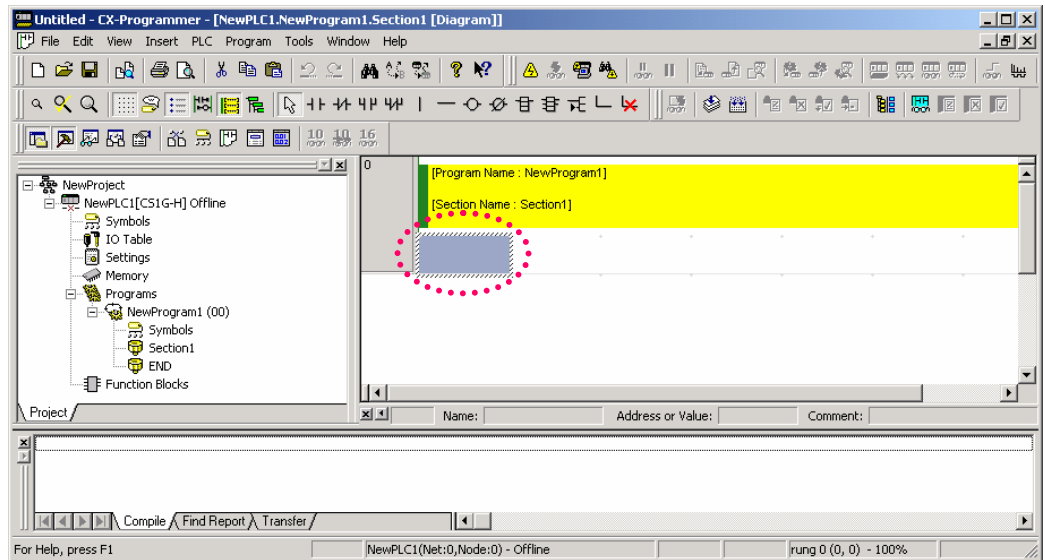


5. Program Creation

Coding of a simple program is explained here.



After checking the cursor position at the upper left of Ladder Window, start programming.



5-1. Entry of Normally Open Contact

C

..... Press [C] from a keyboard to open the [New Contact] dialog.

0

..... 0 of the upper digit of an address can be omitted.



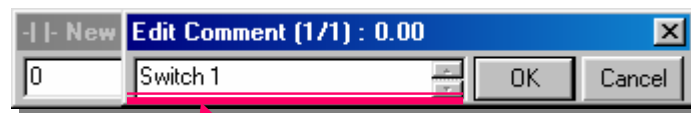
ENT

ENT

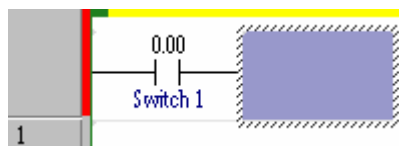
Switch 1

ENT

ENT



Enter a symbol comment.



Deletion of instructions

- Move the cursor to the instruction and then press the DEL key.
- Move the cursor to the right cell of the instruction and press the BS key.

0 of the upper digit of an address is omitted when shown.

[.] (period) is displayed between a channel number and a relay number.

5-2. Entry of Coil

O

..... Press [O] from a keyboard to open the [New Coil] dialog.

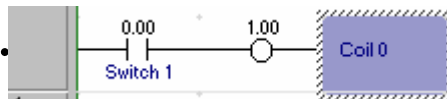
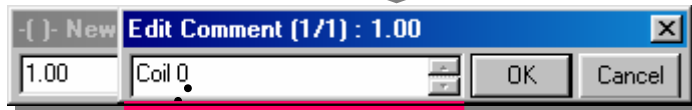
100

ENT

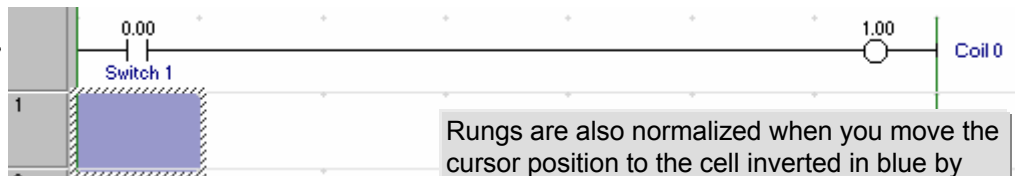
Coil 0

ENT

R



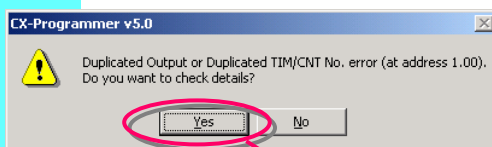
Press [R] to normalize a rung.



Rungs are also normalized when you move the cursor position to the cell inverted in blue by pressing the arrow keys from a keyboard or using a mouse.

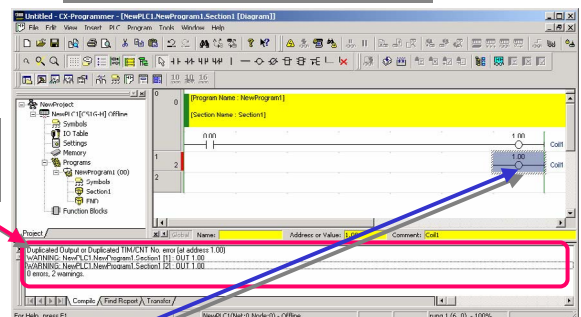
Useful Function: Automatic check of duplicated coils

If a duplicated coil is entered during program creation, the following message is displayed and you can notice that the coil is duplicated right away.



Output Window
automatically opens.

Press the [ESC] key to close
the open Output Window.



Double-click by using a mouse (or press F4). The cursor
moves to the place of the applicable coil on Ladder Window.

Duplicated Output or Duplicated TIM/CNT No. error (at address 1.00)
WARNING: NewPLC1.NewProgram1.Section1 [1]: OUT 1.00
WARNING: NewPLC1.NewProgram1.Section1 [2]: OUT 1.00
0 errors, 2 warnings.

Double-click

The place of a duplicated coil in the program is displayed.

Installation
to Startup

Opening a
new project

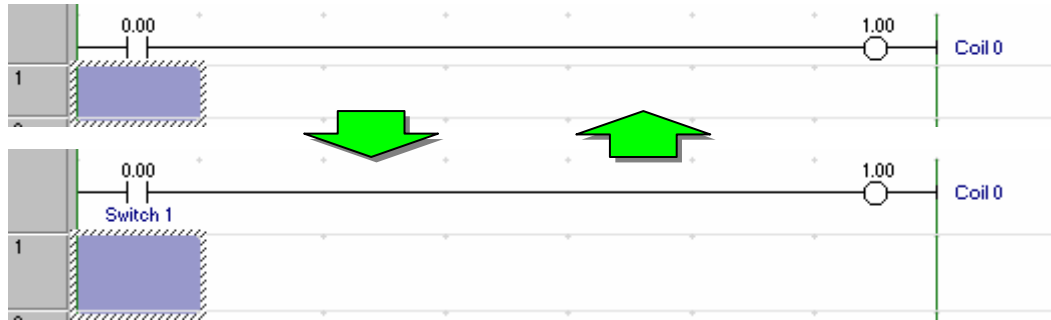
Device type
settings

Creating a
program

Alt + Y

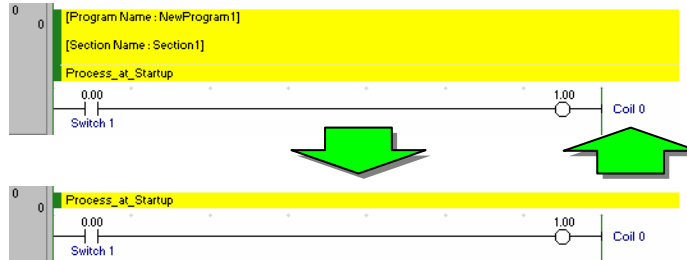
[Reference]

1. Press [Alt]+[Y]. You can switch showing/hiding of Symbol Comment.



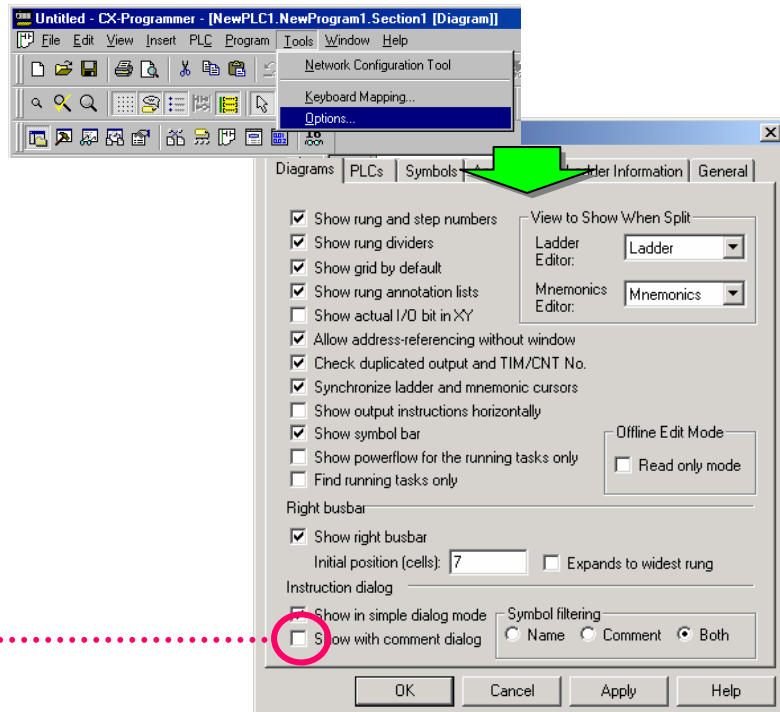
2. Click the toolbar button [Show Program/Section Comments] to switch the display of the comments shown in the head row.

Click



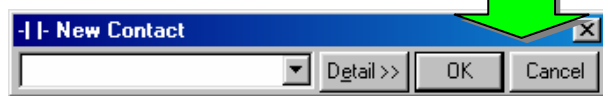
3. Select [Tools] | [Options] from the CX-Programmer menu. You can set hiding of the comment entry dialog.

[Tools] -> [Options]



Click the check box
to remove the check
mark.

The comment entry
dialog is not displayed
anymore.



Installation
to Startup

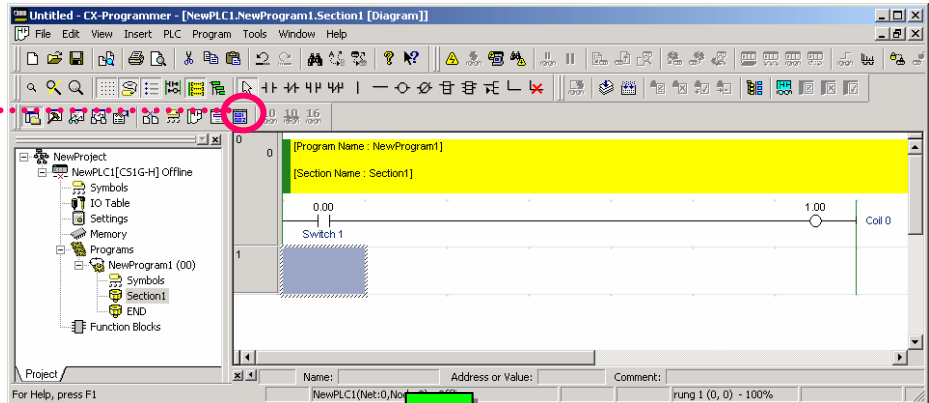
Opening a
new project

Device type
settings

Creating a
program

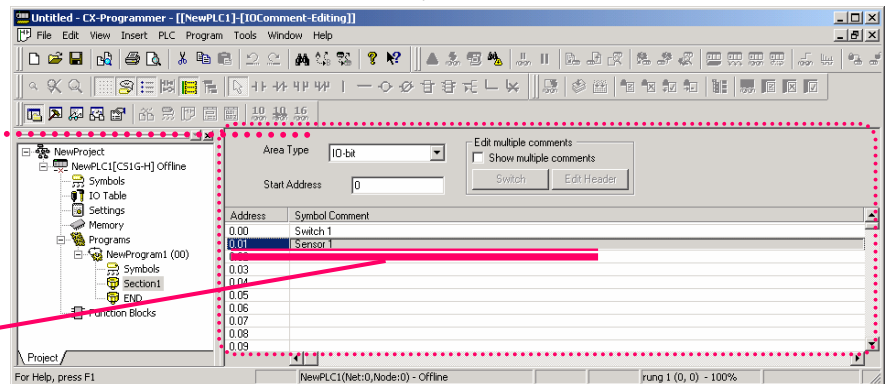
5-3. Edit of Symbol Comment

Click



Ladder Window is
switched to the Symbol
Comment Editing
window.

Double-click the left
mouse button on a bit
number that you want
to enter a symbol comment,
and you will be able to enter
a symbol comment.



Copy&Paste and deletion of one or more comments are possible by the cell.

Drag the mouse with the
right mouse button
pressed to invert the
source bits of copy in
blue.

Example of copying & pasting comments of two bits

Address	Symbol Comment
0.00	Switch 1
0.01	Sensor 1
0.02	
0.03	
0.04	
0.05	
0.06	
0.07	
0.08	
...	

Click the right
mouse button on
the range, and
select [Copy] from
the popup menu.

Copy&Paste of symbol
comments is possible
between
Excel and CX-Programmer too.

Click the right mouse button
on the bit number of the copy
destination, and select [Paste].

Address	Symbol Comment
0.00	Switch 1
0.01	Sensor 1
0.02	
0.03	
0.04	
0.05	
0.06	
0.07	
0.08	
0.09	
0.10	
0.11	

Address	Symbol Comment
0.00	Switch 1
0.01	Sensor 1
0.02	
0.03	Switch 1
0.04	Sensor 1
0.05	

The comments of the selected
two bits are copied.

Installation to Startup

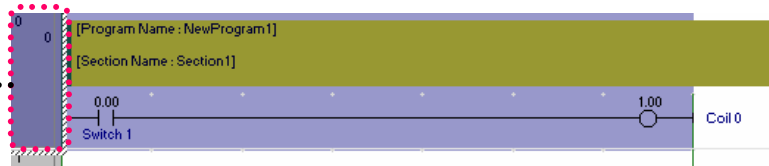
Opening a new project

Device type settings

Creating a program

5-4. Entry of Rung Comment

Move the cursor to this position. (The rung is inverted in blue.)

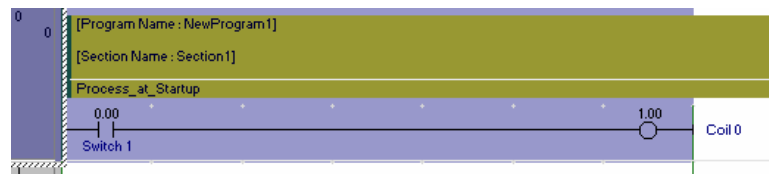


The entry screen shows up.

ENT

[Process_at_Startup]
Enter a rung comment.

ENT



5-5. Entry of Normally Closed Contact

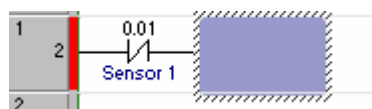
Press "/" from a keyboard to show the [New Closed Contact] dialog.

1

ENT

Sensor 1

ENT



Installation to Startup

Opening a new project

Device type settings

Creating a program

O 101

ENT Coil 1

ENT R



5-6. Entry of Attached Comments

This function is very useful for keeping change histories at maintenance and notes of debug bits at startup.

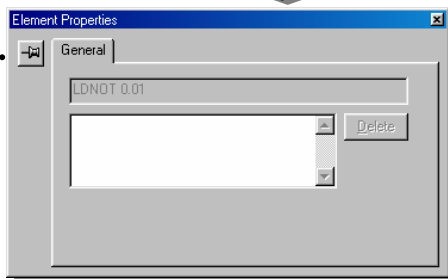
Move the cursor to the contact to which you want to write an annotation.



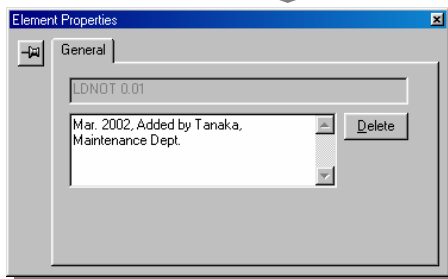
Alt + ENT

Or click the right mouse button.
-> [Properties]

The entry screen shows up.



Enter [Mar. 2002
Added by Tanaka,
Maintenance Dept.]



Press [Alt] + [A] to switch showing/hiding of attached comments.

ENT



Installation
to Startup

Opening a
new project

Device type
settings

Creating a
program

5-7. Entry of Differential Contact...Up

C

100

Click **Detail >>**

Click [Up].

ENT

ENT

100

1.00

Coil 0

This entry method is available only for CS/CJ and CV series PLCs.
For the other series PLCs, use DIFU (13).

5-8. Entry of Differential Contact...Down

C

101

Click **Detail >>**

Click [Down].

ENT

101

1.01

Coil 1

This entry method is available only for CS/CJ and CV series PLCs.
For the other series PLCs, use DIFD (14).



Ctrl + **↑**
Or
U

O **200**
ENT **Coil 2**

ENT **R**

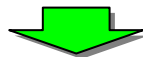
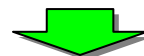
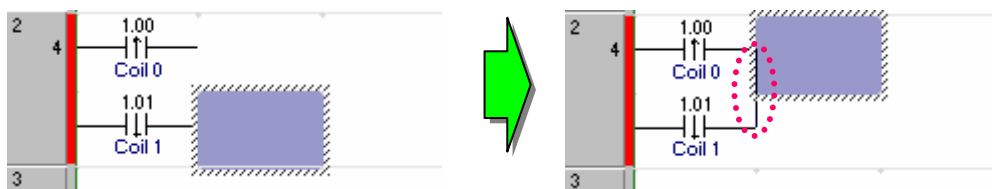
C **200**
ENT **ENT**

O **300**
ENT **Coil 3**
ENT

←

Ctrl + **↓**
Or
V

5-9. Entry of Vertical...Up



5-10. Entry of Vertical...Down



5-11. Entry of Advanced Instructions 1 - Entry of Strings

I

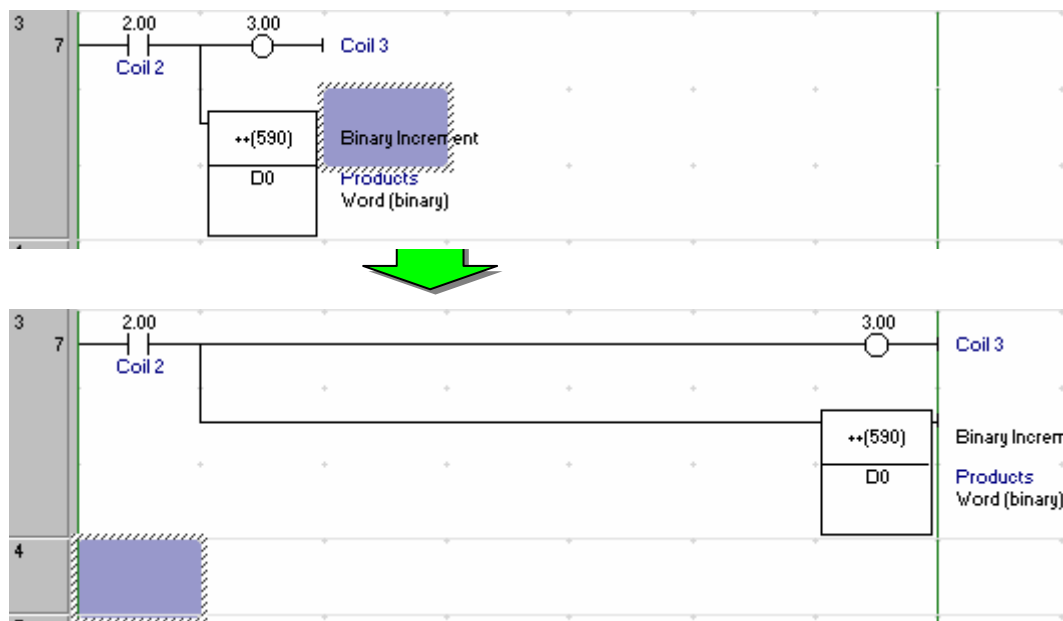
..... Show the [New Instruction] dialog.



Enter an instruction and its operand.



Enter a comment.

See the next page for
the contents of
instructions.

Installation
to Startup

Opening a
new project

Device type
settings

Creating a
program

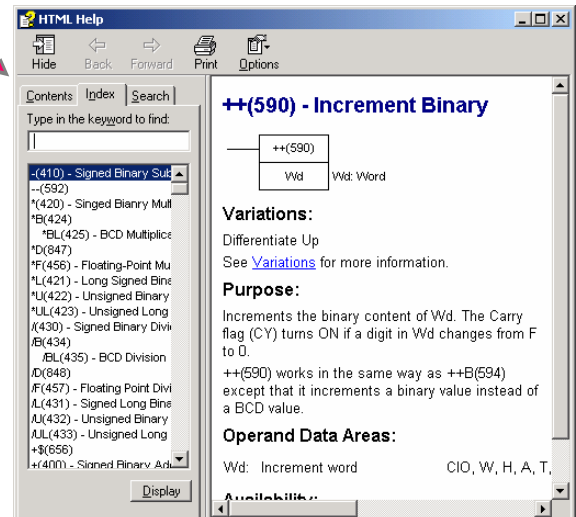
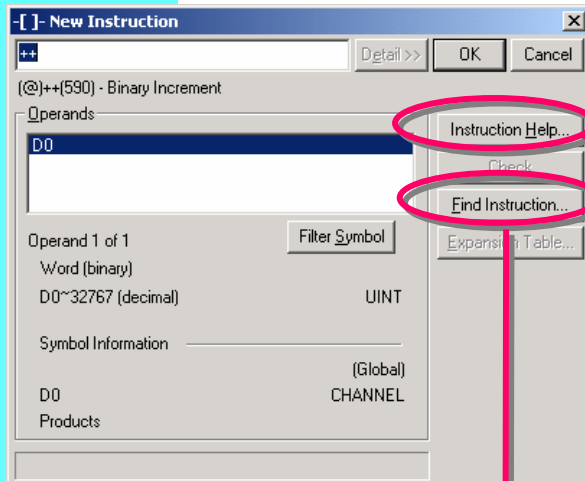
5-12. Entry of Advanced Instructions 1 - Useful Functions

Click **Detail >>**



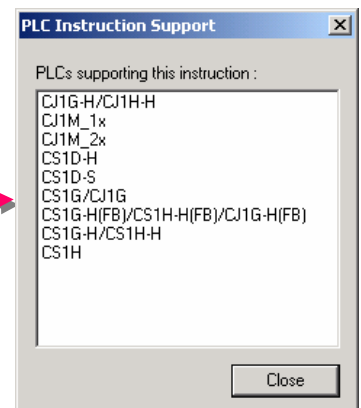
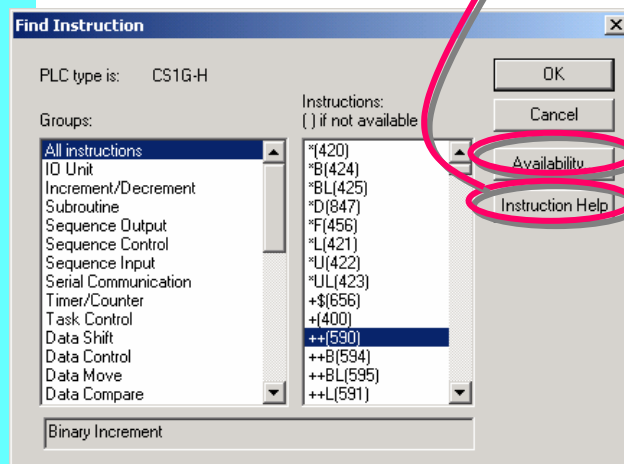
Instruction Help Function

Click **Instruction Help...**
The reference guide screen of the instruction shows up.



Find Instruction Function

Click **Find Instruction...**
The list of advanced instructions per function shows up.



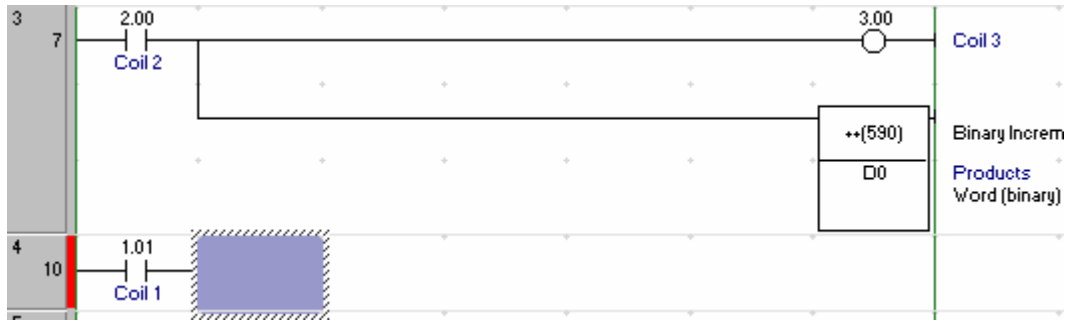
PLCs supporting the applicable instruction are listed.

Installation
to Startup

Opening a
new project

Device type
settings

Creating a
program



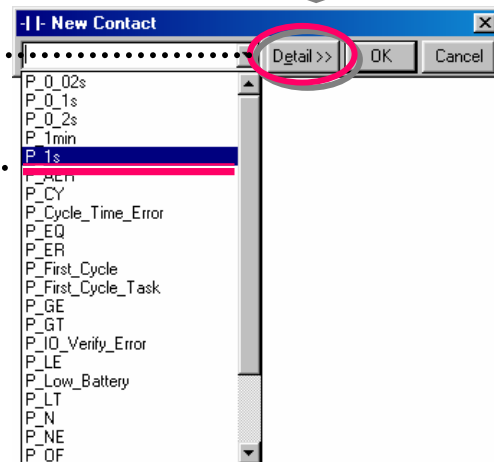
5-13. Entry of Auxiliary Relay - 1.0 Second Clock Pulse Bit

Show the [New Contact] dialog.

C



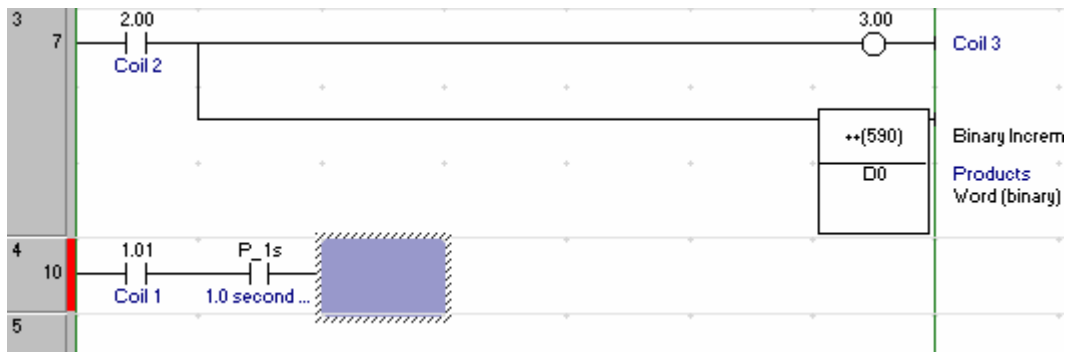
Click



Select [P_1s] from the
pull-down menu.



ENT





Refer to the former
pages to execute
coding.



5-14. Entry of Advanced Instructions 2

- Entry of Differential Instructions

Differential Instructions...Instructions executed
in only one scan when running a program.

Show the [New Instruction] dialog.



Enter

@MOV_#0
D100

Attach @ (at mark)
before instructions. It
makes the instructions
differential.



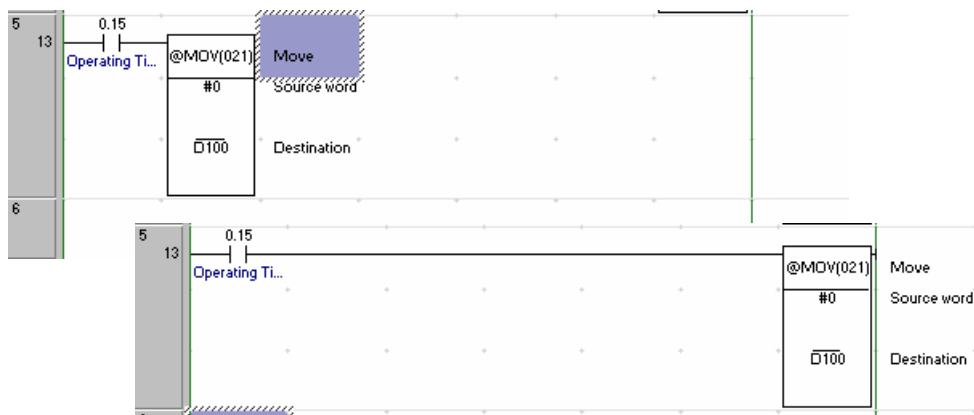
Enter a comment if necessary.



ENT

ENT

R



Installation
to Startup



Opening a
new project



Device type
settings

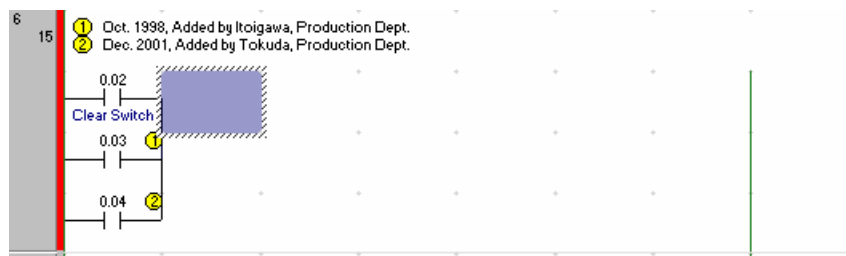
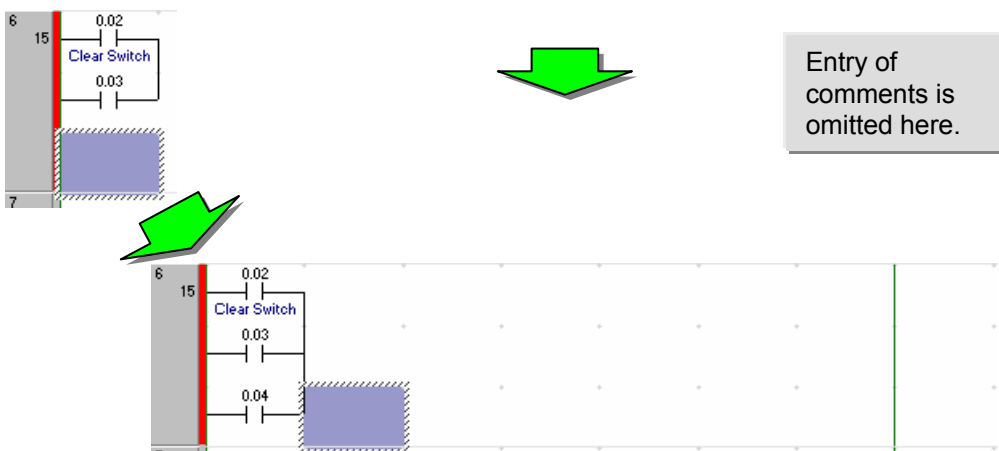
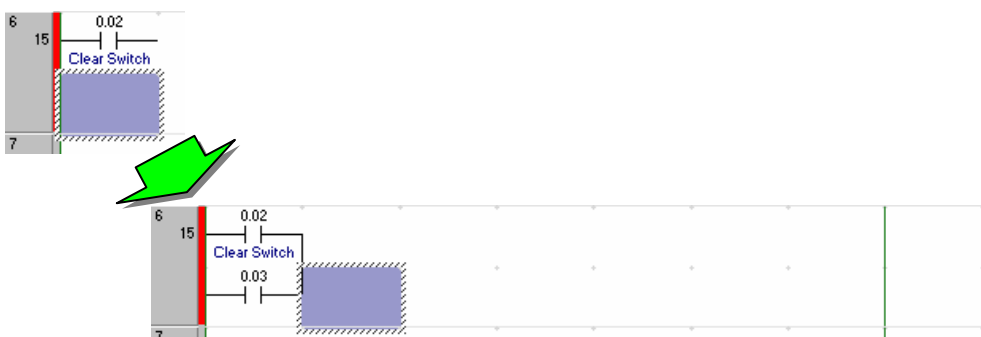


Creating a
program

Refer to the former pages to execute coding.

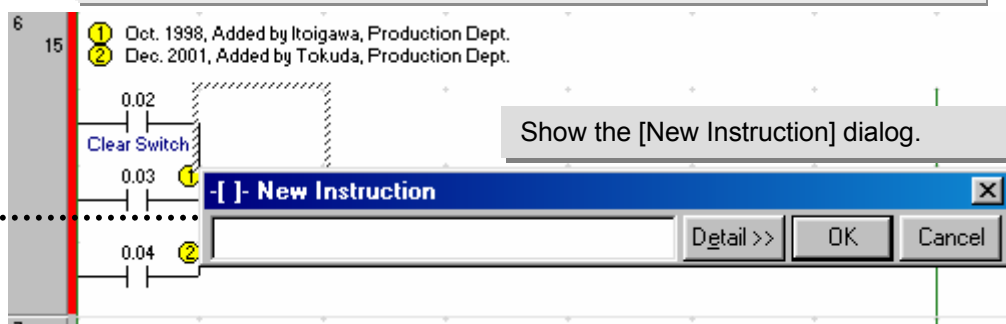


5-15. Entry of OR Rung



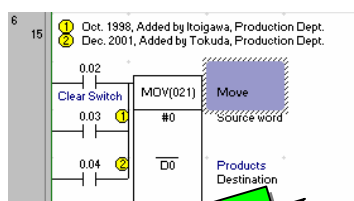
Refer to the section 5-6 to enter annotations.

5-16. Entry of Advanced Instructions 3 - Entry by Fun No.

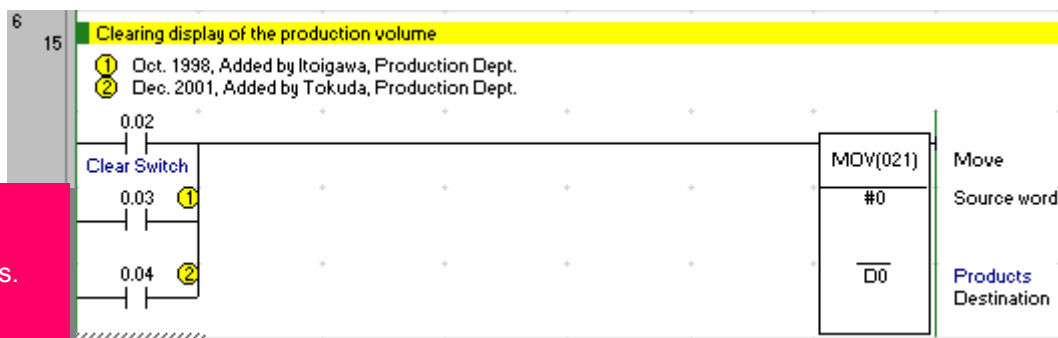


021

The instruction corresponding to the entered Fun No. is displayed.



Refer to the section 5-4 to enter a rung comment.



Note:
The Fun No. of MOV depends on PLC types.
CS-series -> 021
CJ-series -> 021
CV-series -> 030
C-series -> 21

I

M

Enter #0 D0 ENT

M

ENT

R

Installation
to Startup



Opening a
new project



Device type
settings



Creating a
program

Refer to the former
pages to enter
rungs and
comments.



5-17. Entry of Timer Instructions

Entry of a Timer bit

-[/]- New Closed Contact

T0

Detail >> OK Cancel

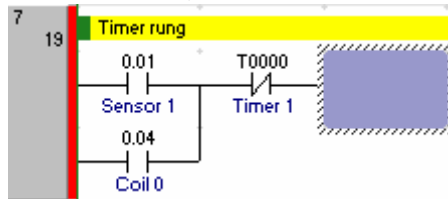


-[/]- New Edit Comment (1/1) : T0000

T0

Timer 1

OK Cancel

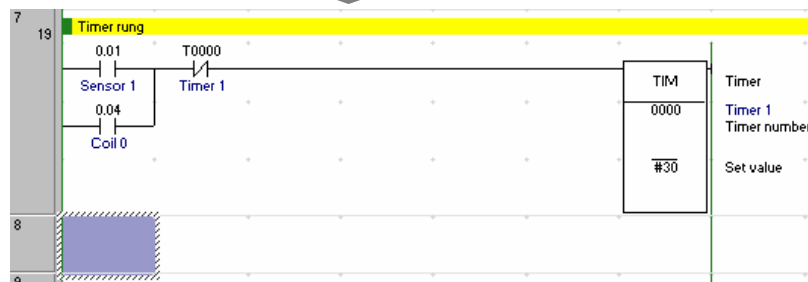
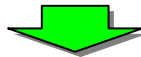
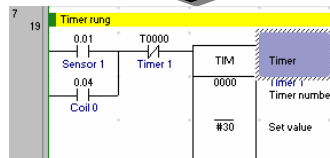


Entry of a Timer instruction

[] - New Instruction

TIM 0 #30

Detail >> OK Cancel



/ T0 ENT

*T0: Indicates TIM0.



Enter a comment.

Timer 1 ENT

I TIM_0_#30



ENT



R

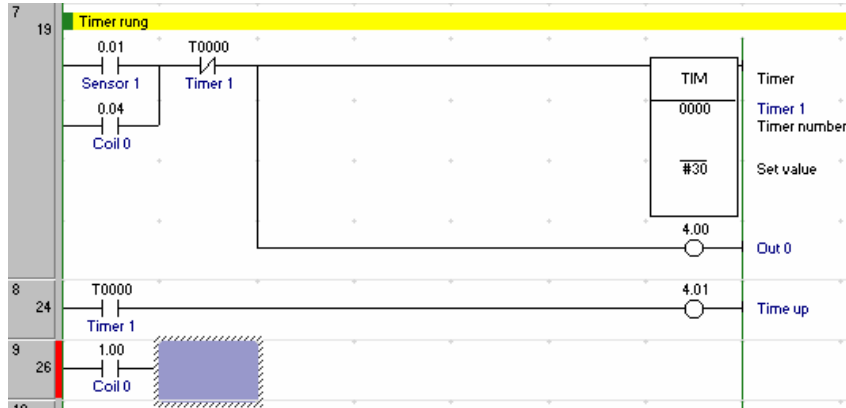
Installation
to Startup

Opening a
new project

Device type
settings

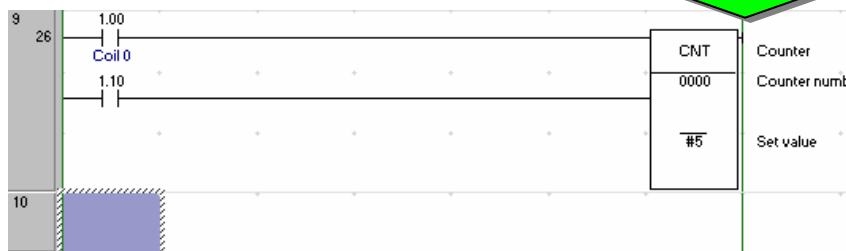
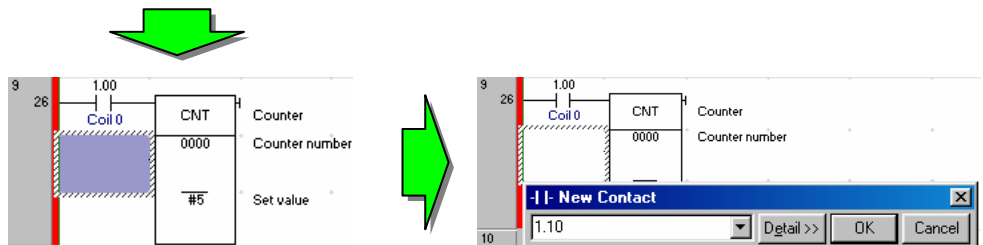
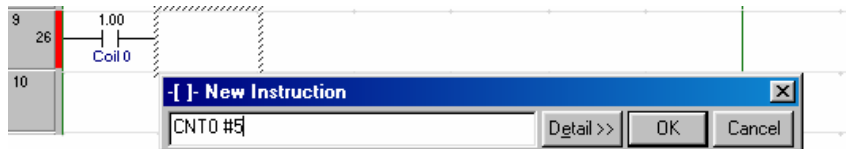
Creating a
program

Refer to the former
pages to execute
coding.

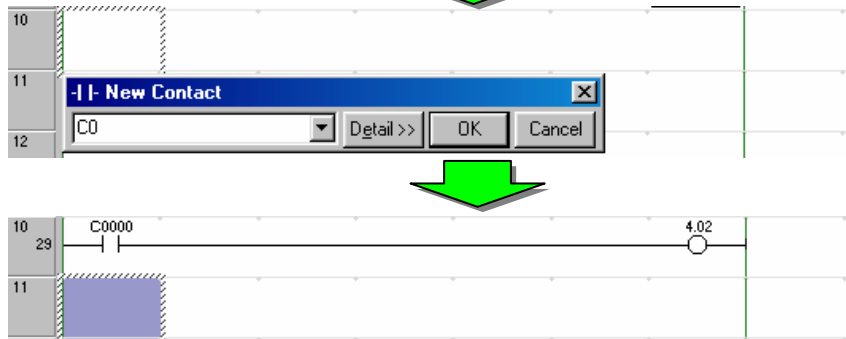


5-18. Entry of Counter Instructions

Entry of a Counter instruction



Entry of a Counter bit



I
CNT_0_#5

ENT

Move the cursor by
using arrow keys or a
mouse.

Enter a bit for reset.

R

C C0 ENT

ENT

O 402 ENT

ENT

R

Move the cursor to this position. The rung is inverted as shown right.

5-19. Edit of Rungs ...Copy & Paste

Refer to the former sections to enter a rung.

Ctrl + C
(Copy a rung)



Press the ↓ key to move the cursor to this position.

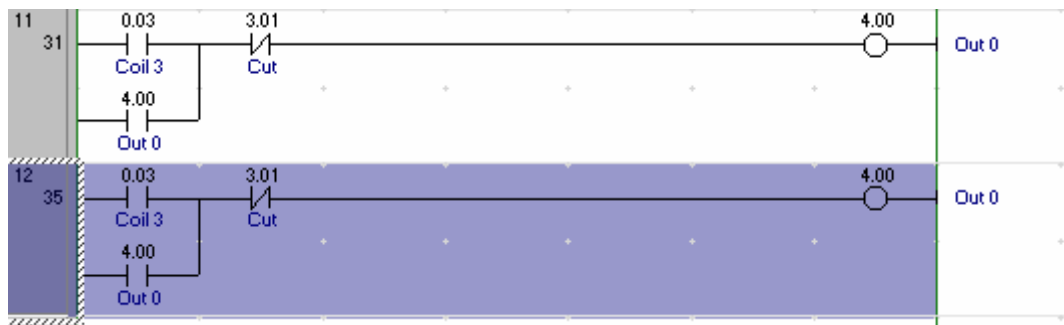


Ctrl + V

(Paste a copied rung)

Click each instruction and then change the bit numbers.

- ◆ You can copy instructions selected by dragging a mouse.
- ◆ You can also cut selected rungs (instructions) by [Ctrl]+[X].



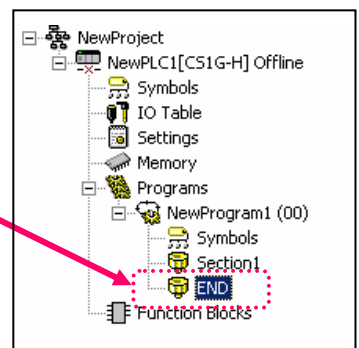
- ◆ When making a mistake, press or [Ctrl+Z] for Undo (return to the previous operation)
- press or [Ctrl+Y] for Redo (go to the next operation)

5-20. Entry of END Instruction

At the creation of a new project, a section of the END instruction only is automatically generated. You do not need to enter an END instruction.

Note:

The END section is not generated when you load a program created with CX-Programmer V2 or the former versions.



Chapter 2

Online / Debug

CX-Programmer

Online
to Transfer

Monitoring

Force On
Force Off

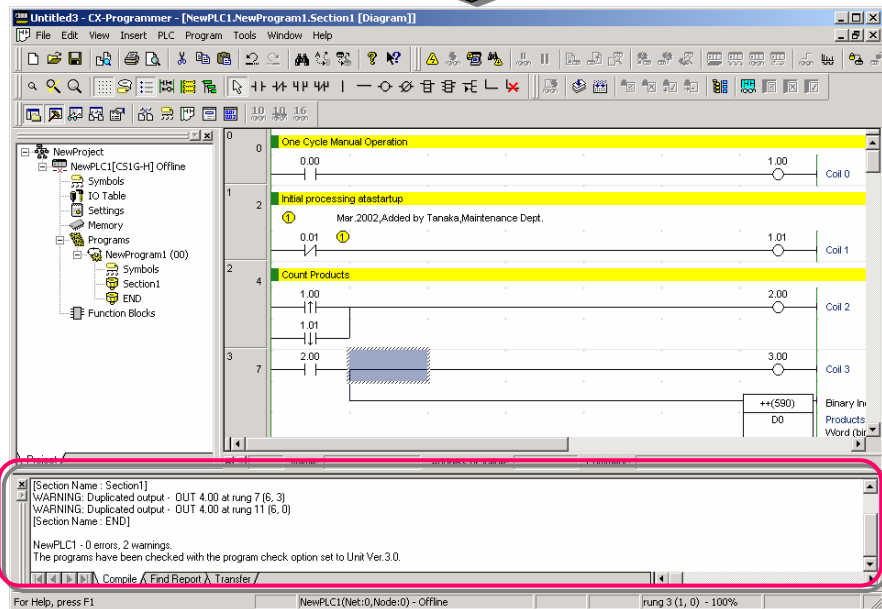
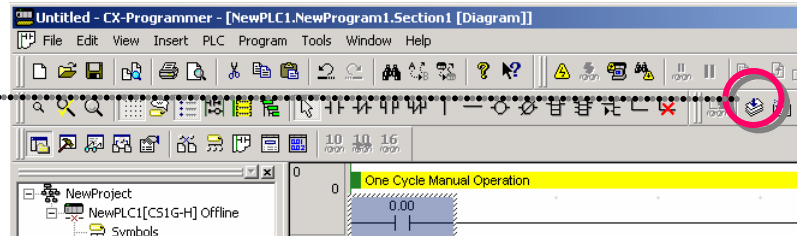
Program
Check

Online
Edit

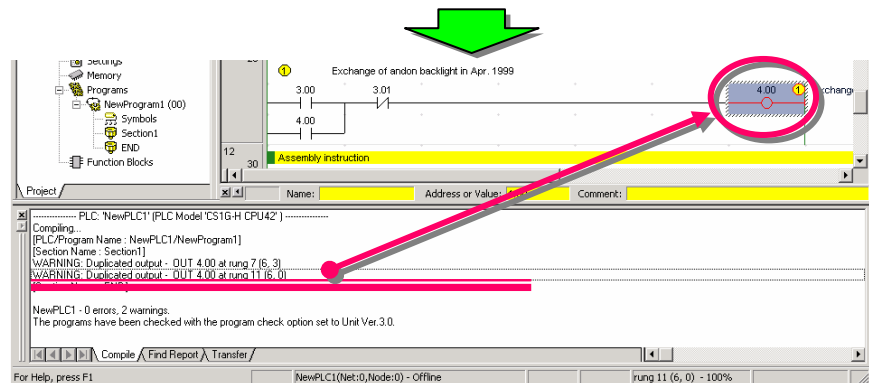
1. Program Error Check (Compile)

Before program transfer, check errors.

Click



Errors and addresses
are displayed on
Output Window.



Double-click a
displayed error, and
the cursor in Ladder
Diagram will go to the
corresponding error
location and the error
rung will be shown in
red.



Modify the error.

- Output Window automatically opens at program check.
- The cursor moves to an error location by pressing J or F4 key.
- Output Window closes by pressing the ESC key.

Online
to Transfer

Monitoring

Force On
Force Off

Program
Check

Online
Edit

2. Going Online

CX-Programmer provides three kinds of connecting methods depending on usage.



Normal online. Enables you to go online with a PLC of the device type and method specified when opening a project.



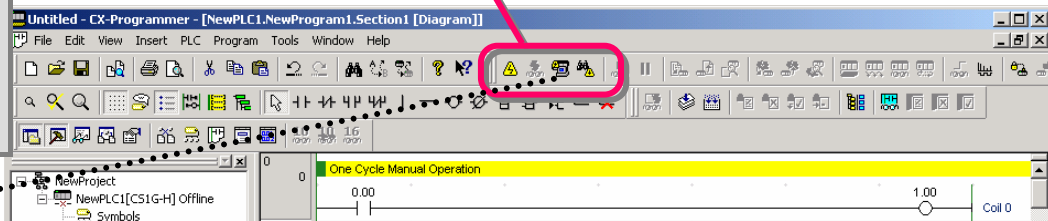
Auto online. Automatically recognizes the connected PLC and enables you to go online with a PLC with one button.
-> Uploads all data such as programs from the PLC.



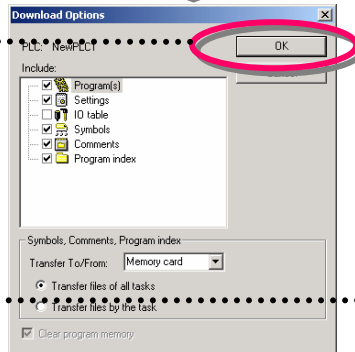
Online with Simulator. Enables you to go online with CX-Simulator with one button (You need to install CX-Simulator.)

This time, online/debug functions when working online with CX-Simulator are explained in this guide (Install CX-Simulator separately).

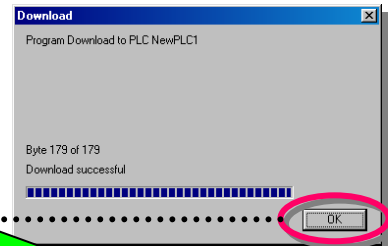
Click



Click [OK].

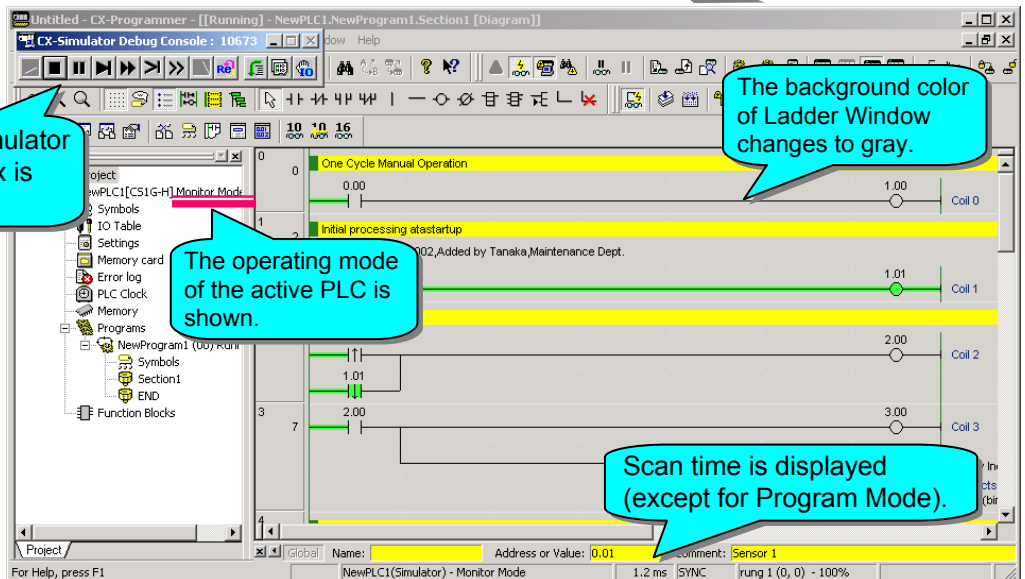


Program transfer starts.



Click [OK].

The CX-Simulator Console box is shown.



The operating mode of the active PLC is shown.

The background color of Ladder Window changes to gray.

Scan time is displayed (except for Program Mode).

Online
to Transfer

Monitoring

Force On
Force Off

Program
Check

Online
Edit

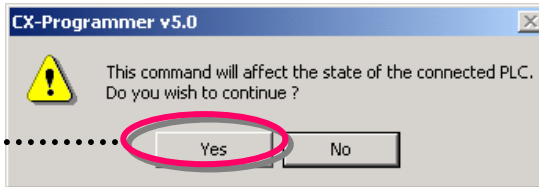
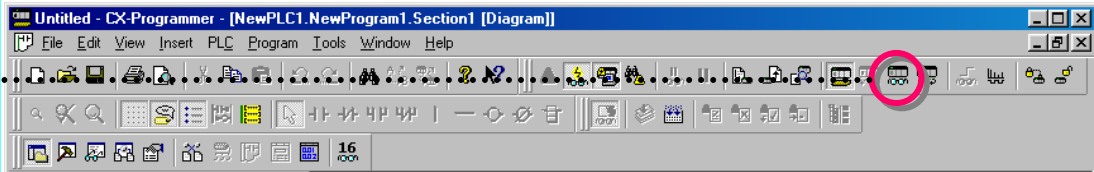
3. Monitoring

Change the PLC
(simulator) to
Monitor Mode.

Click

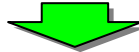


The on/off statuses of contacts and coils are monitored.

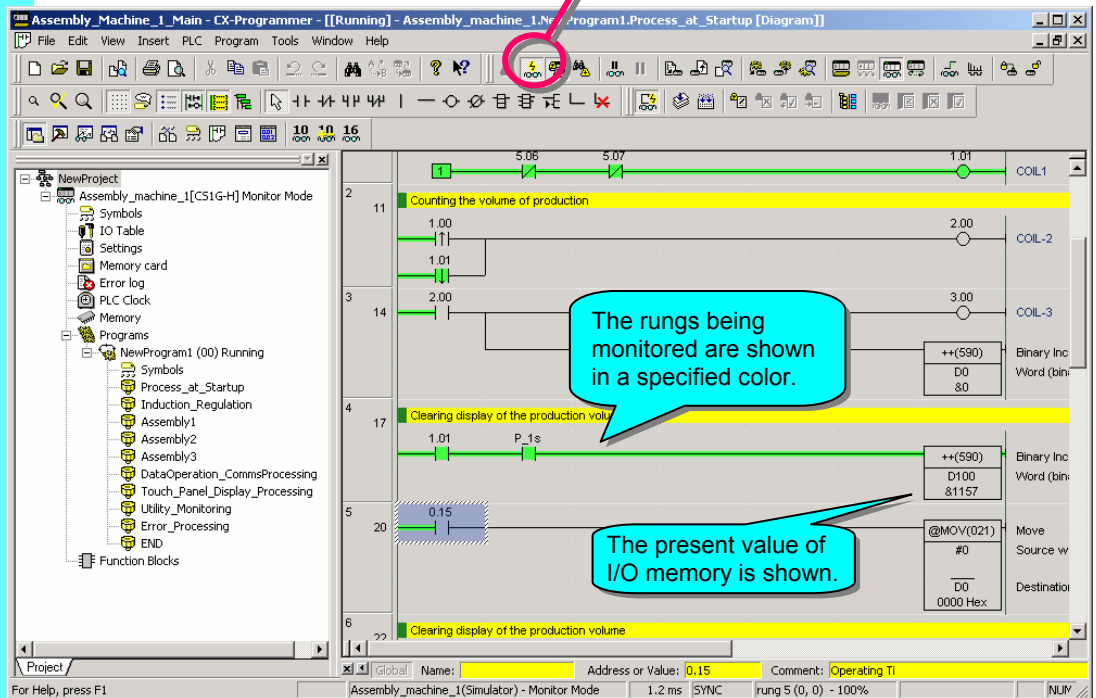


If your program has a large volume of data, the scroll speed of the screen may become slow when monitoring. In that case, click the below icon to cancel monitoring once, scroll the screen to the address you want to monitor, and then change to monitoring mode again.

Click [Yes].



toggles on/off of PLC monitoring.



Online
to Transfer

Monitoring

Force On
Force Off

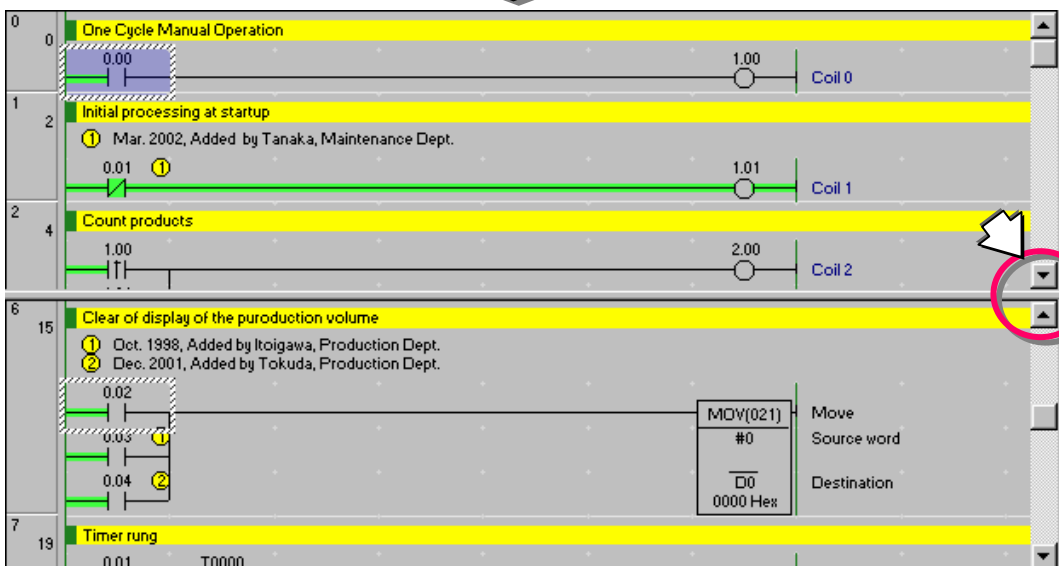
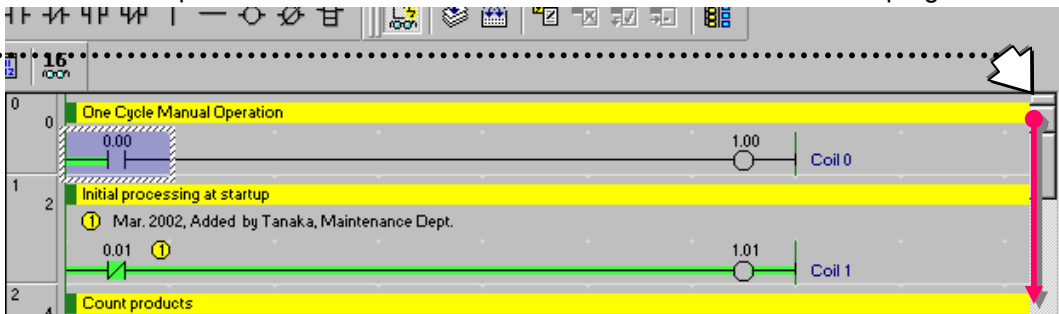
Program
Check

Online
Edit

4. Monitoring - 2 Monitoring Many Locations in Program at Once


You can split Ladder Window and monitor more than one location in a program at once.

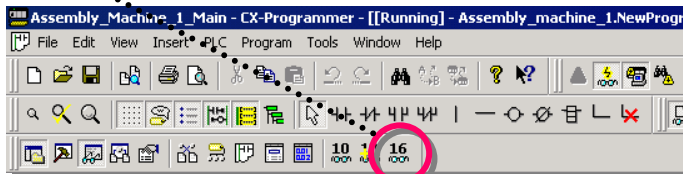
Move the mouse pointer to the arrow position shown in the right figure and drag the cursor down with the left mouse button pressed.



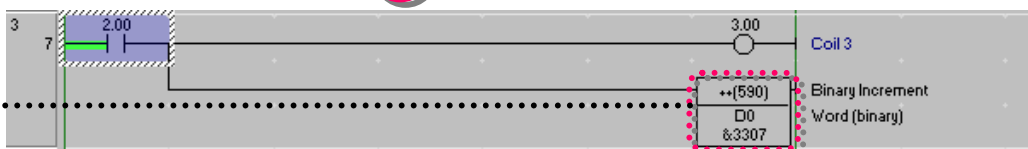
The screen is divided into two panes up and down, and you can display any address in two panes respectively by using the scroll bars.

5. Monitoring - 3 Monitoring in Hex

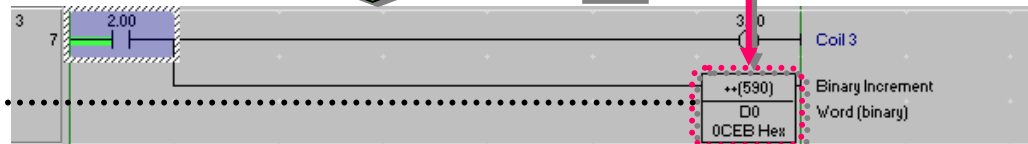
Click  to switch the display format of the present value of IO memory between decimal and hexadecimal.



Shown in decimal



Shown in hex



Online
to Transfer

Monitoring

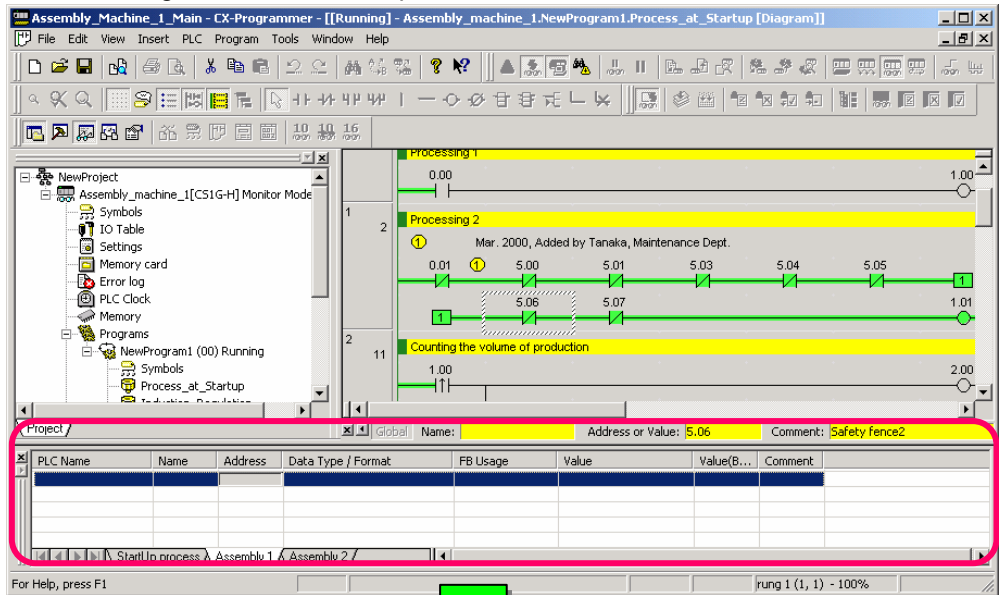
Force On
Force Off

Program
Check

Online
Edit

6. Monitoring - 4 Watch Window

I/O monitoring of the addresses specified in Watch Window is executed.



Display Watch
Window.

Alt + 3

Enter a bit number
that you want to
monitor.

400

ENT

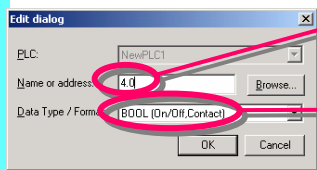
Press the ENT key.....
continuously for auto
increment of addresses.

ENT
ENT
ENT

Entry of BOOL type (contact)

Example: Entry of 4CH 00Bit

Enter "." (period) between CH and Bit.



Or enter "400" without a period in the "Name or address" box and then specify "BOOL" in the "Data Type/Format" box (Reverse the box and then press B key from the keyboard.)

Online
to Transfer

Monitoring

Force On
Force Off

Program
Check

Online
Edit

7. Monitoring - 5 Present Value Change and Binary Monitoring in Watch Window

The present values of bits and words are changed in Watch Window.

In Watch Window, binary monitoring is possible for the data that can be treated by the word.

Project: Global Name: Address or Value: 5.06 Comment: Safety fence2

PLC Name	Name	Address	Data Type / Format	FB Usage	Value	Value(B...	Comment
Assembly_machine_1		D0	CHANNEL (Hex, Channel)		0002 Hex	0000 0...	
Assembly_machine_1			CHANNEL (Hex, Channel)		BBE7 Hex	1011 1...	
Assembly_machine_1		4	CHANNEL (Hex, Channel)		0000 Hex	0000 0...	

StartUp process Assembly 1 Assembly 2 /

For Help, press F1

rung 1 (1, 1) - 100%

Double-click the mouse.

An entry dialog opens.

Set New Value

Address: 4

Value: %60523

New Value:

0 to 65535, #0 to #FFFF

Set Value

Close

Edit Address/Type

Binary >>

Enter a new value that you want to change to.

Set New Value

Address: 4

Value: %60523

New Value: 56569

0 to 65535

Set Value

Close

Edit Address/Type

Binary >>

Click

4-word data is displayed in the binary system.

Set New Value

Address: 4

Value: %60523

New Value: 56569

0 to 65535

Address: Value: 15 14 13 12 11 10 9 8 7 6 5 4 3 2 1 0

4 EC6B HEX

Force On

Force Off

Set On

Set Off

Cancel

As shown in the guidance at the bottom of the dialog, Force On/Off and Set On/Off are enabled also by key operation.

Click the right mouse button on a bit, and you will be able to select Force On/Off and Set On/Off from the popup menu.

Set New Value

Address: 4

Value: %60523

New Value: 56569

0 to 65535

Address: Value: 15 14 13 12 11 10 9 8 7 6 5 4 3 2 1 0

4 EC6B HEX

Force On

Force Off

Set On

Set Off

Cancel

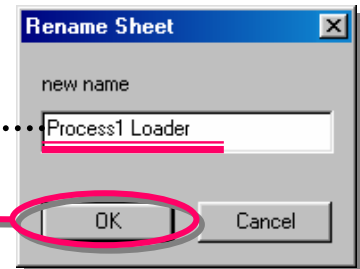
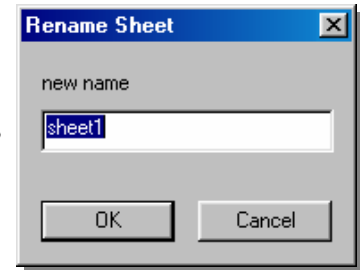
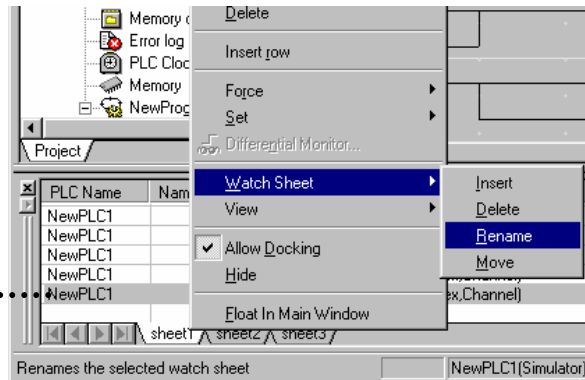
Cursorkey: Move TAB: Value T: ChangeOrder J: InvertBit
Ctrl+J: ForceOn Ctrl+K: ForceOff Ctrl+L: Clear

8. Useful Functions of Watch Window

Watch Window has a function that classifies and displays data in sheets like MS-EXCEL and names each sheet given names.

This function is useful for debug or startup if you gather and manage the bits and words you want to check as one block in one sheet.

Click the right button of a mouse on Sheet1, and then select [Watch Sheet] -> [Rename].



Enter a name.

Click [OK].

To add a sheet, select [Watch sheet] -> [Insert].

PLC Name	Name	Address	Data Type / Format	FB Usage	Value	Value(Binary)	Comment
Assembly_machine_1		400	CHANNEL (Hex, Channel)		0000 Hex	0000 0000 0000 0000	
Assembly_machine_1		401	CHANNEL (Hex, Channel)		0000 Hex	0000 0000 0000 0000	
Assembly_machine_1		402	CHANNEL (Hex, Channel)		0000 Hex	0000 0000 0000 0000	
Assembly_machine_1		403	CHANNEL (Hex, Channel)		0000 Hex	0000 0000 0000 0000	

It is useful to manage data if you name sheets by the phase or assembly.

Right-click on Watch Window. -> Select [View] from the popup menu. And then you will be able to choose showing/hiding of each item on Watch Window.

The names set by this operation are all saved when the project is saved (extension: .opt). Therefore, they are loaded as well as data such as ladder programs when the project is loaded next time.

Online
to Transfer

Monitoring

Force On
Force Off

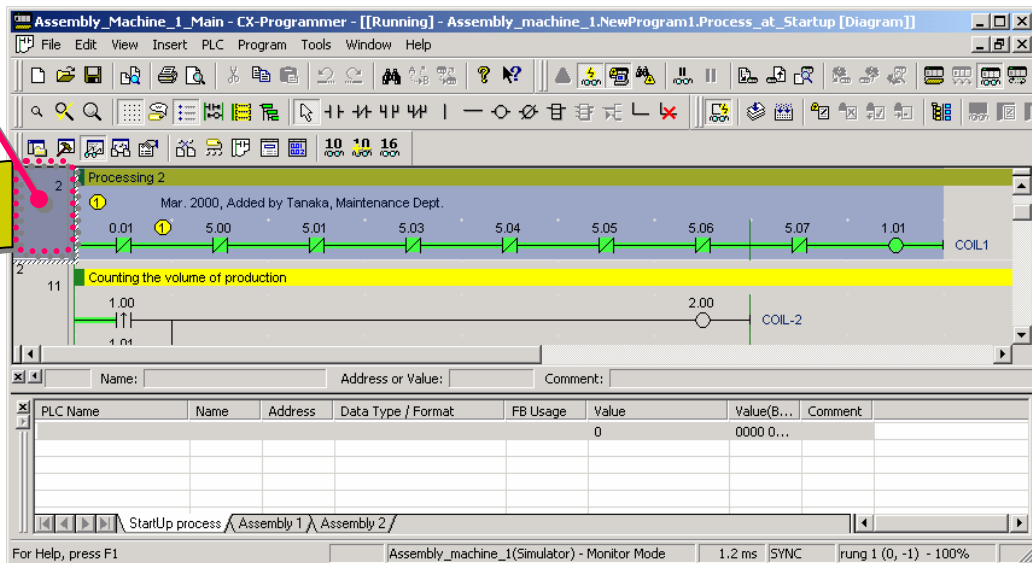
Program
Check

Online
Edit

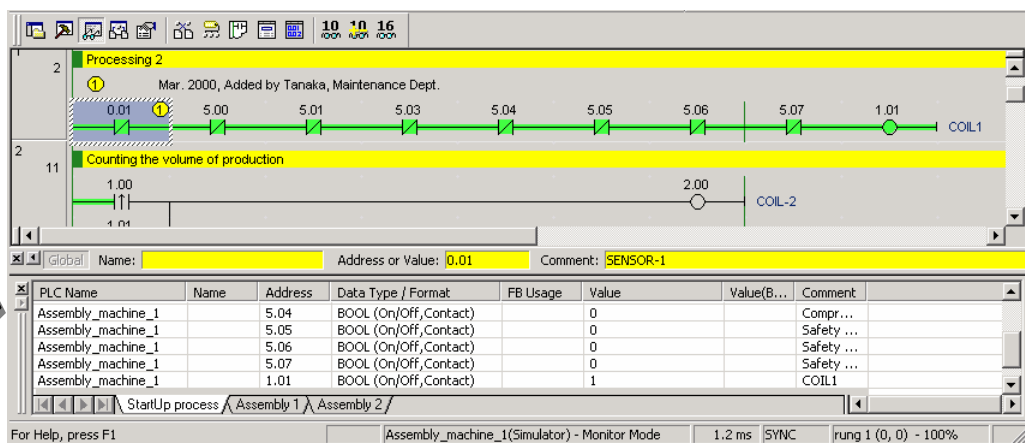
9. Monitoring - 6 Watch Window - 2

Move the mouse
cursor to this
position.

Drag & Drop from Ladder Diagram enables you to add an address to be monitored.



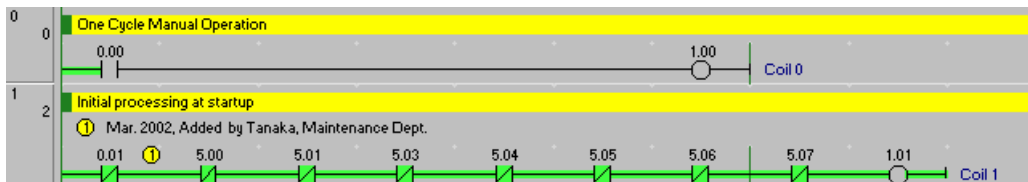
Drag and drop on Watch
Window.



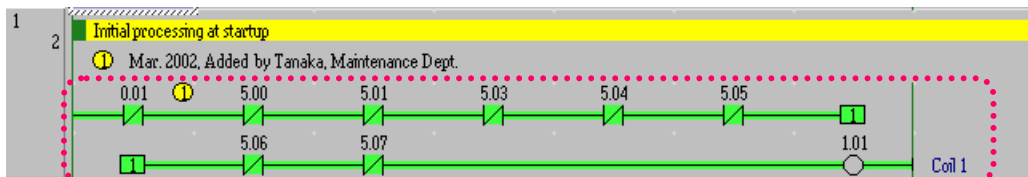
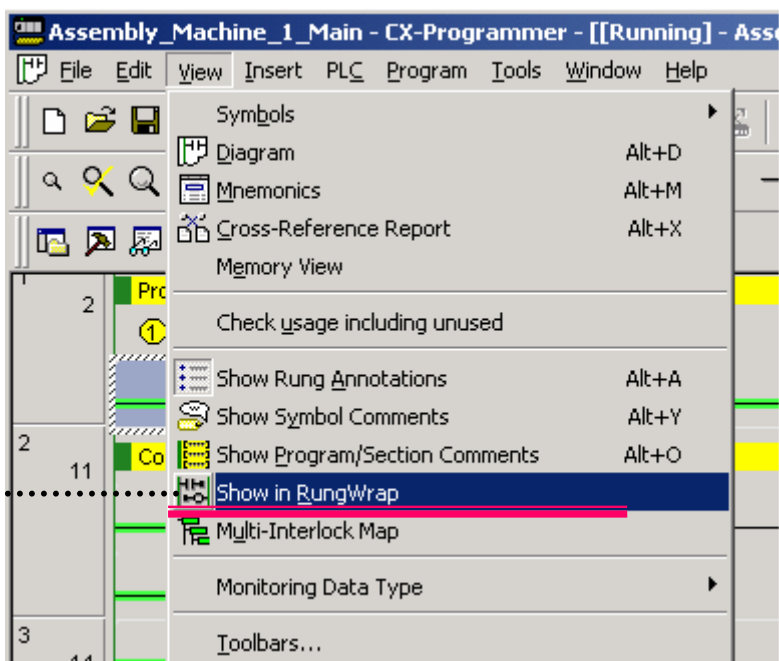
Data such as rungs, bits per block, or operands of advanced instructions is pasted on Watch Window.
Moreover, the on/off statuses of the bits and the present values of words are displayed.

10. Monitoring - 7 Rung-wrap of Long Rung on Display

This function makes a rung longer than the right bus bar as shown in the below figure wrap when displayed.



Select [View] ->
[Show in
RungWrap].



The rung is wrapped at the right bus bar.

Once set, this function is always active until released by taking the reverse procedure of the above one.

Online
to Transfer

Monitoring

Force On
Force Off

Program
Check

Online
Edit

11. Monitoring - 8 Differential Monitor

The function detects differential up/down of a specified bit and indicates that differential conditions are satisfied by sound or display.

The function eliminates the use of a trap rung for checking operation and improves the efficiency of programming and debug operations.

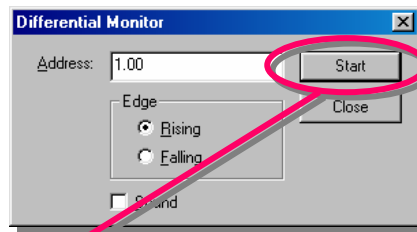
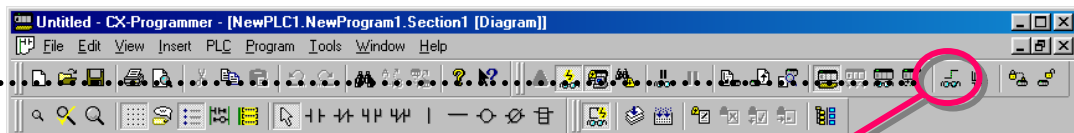
Move the cursor to a
bit to be monitored.



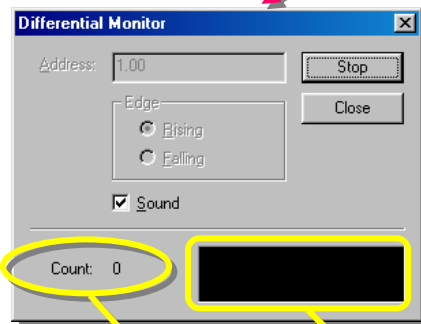
Click



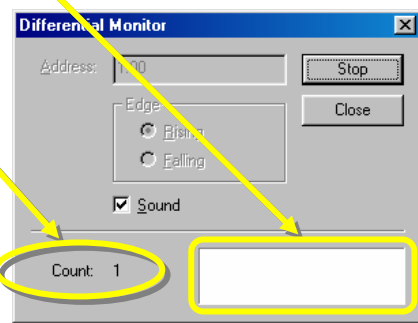
Or click the right mouse
button on the applicable
bit and select
[Differential Monitor]
from the popup menu.



Click [Start].



The count number is displayed on the
dialog every time the differential
condition (differential up in this
example) is satisfied and the color of
the box changes each time.



Online
to Transfer

Monitoring

Force On
Force Off

Program
Check

Online
Edit

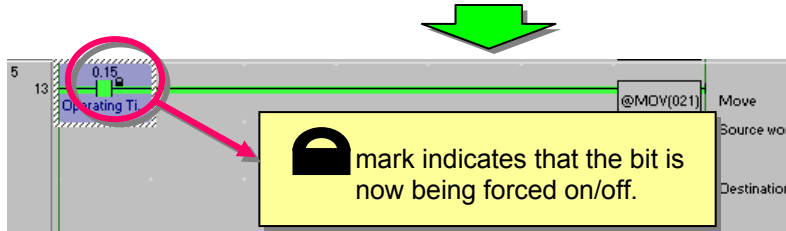
12. Force On/Off

Contacts/coils are forced on/off from CX-Programmer.

Move the cursor to a contact or coil that you want to force on/off.



Click the right mouse button. ->
[Force] -> [On]



Force Off/Cancel of bits/coils are enabled in the same way.

Once bits/coils are forced on/off, the forced statuses are held until cancelled or the reverse procedures of on/off are taken.

The statuses do not change by an external input or the operational result of the program.

Moreover, force operations are not enabled when the PLC is in the Run mode.

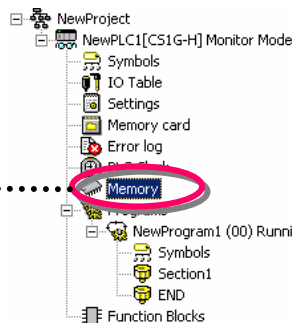
Shortcut Key
Ctrl+J: Force On
Ctrl+K: Force Off

13. Displaying List of Forced-on/off Bits

The bits forced on/off can be listed in a table.

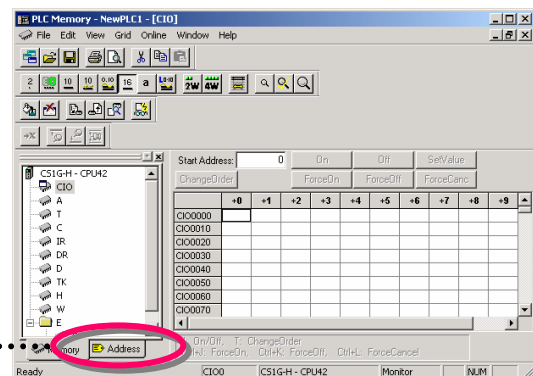
This function enables you to check the forced statuses of more than one bit at a glance.

Display Project
Workspace.
[Alt] + 1



Double-click
[Memory].

Click the
[Address] tab.



Double-click
[Forced Status].

Address	Value	Attribute
CIO0.0	ON	Forced
CIO0.1	ON	Forced
CIO0.2	ON	Forced
CIO0.15	ON	Forced
C0.0	ON	Forced

Online
to Transfer

Monitoring

Force On
Force Off

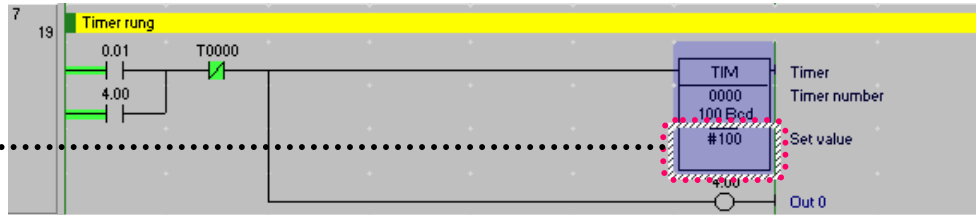
Program
Check

Online
Edit

14. Changing Set Value of Timer

The set value of a timer is changed while CPU is running (in the Monitor mode only).

Move the cursor to the
set value of a timer.



Enter the new set value #100.

Set Timer/Counter Value

Value or address:

UINT_BCD
#0~9999 (bcd)

Symbol Information

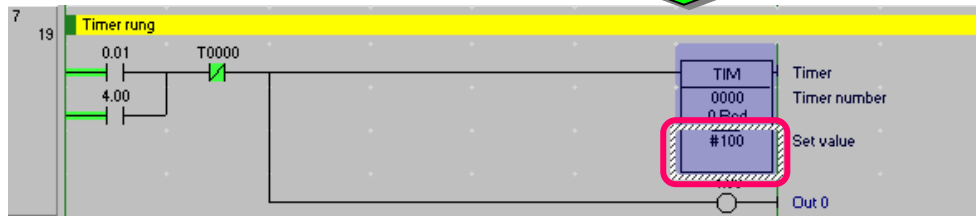
Set Timer/Counter Value

Value or address:

UINT_BCD
#0~9999 (bcd)

Symbol Information

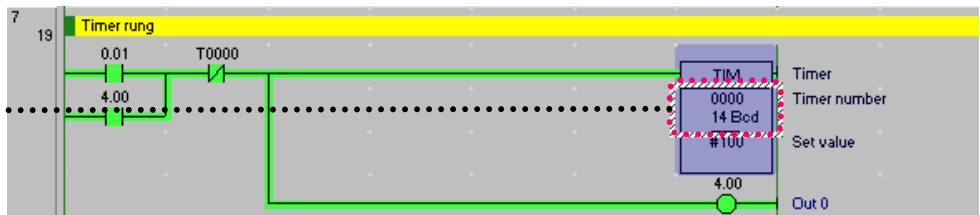
Click [OK] to complete.



15. Changing Present Value of Timer

The present value of a timer is changed while CPU is running (in the Monitor mode only).

Move the cursor to the
present value of a
timer.



Enter a new present value 5000.

Set New Value

Address:

Data type:

Value:

0 to 9999

Set New Value

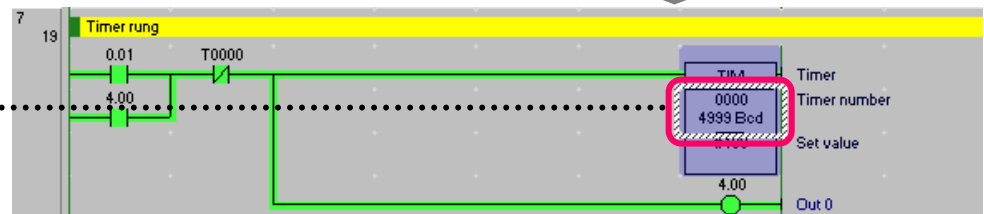
Address:

Data type:

Value:

0 to 9999

Click [Set] to complete.



Subtraction starts from
the new value 5000.

ENT

Or double-click.

ENT

Or double-click.

Online
to Transfer

Monitoring

Force On
Force Off

Program
Check

Online
Edit

16. Find Function - 1 Find from Address Reference Tool

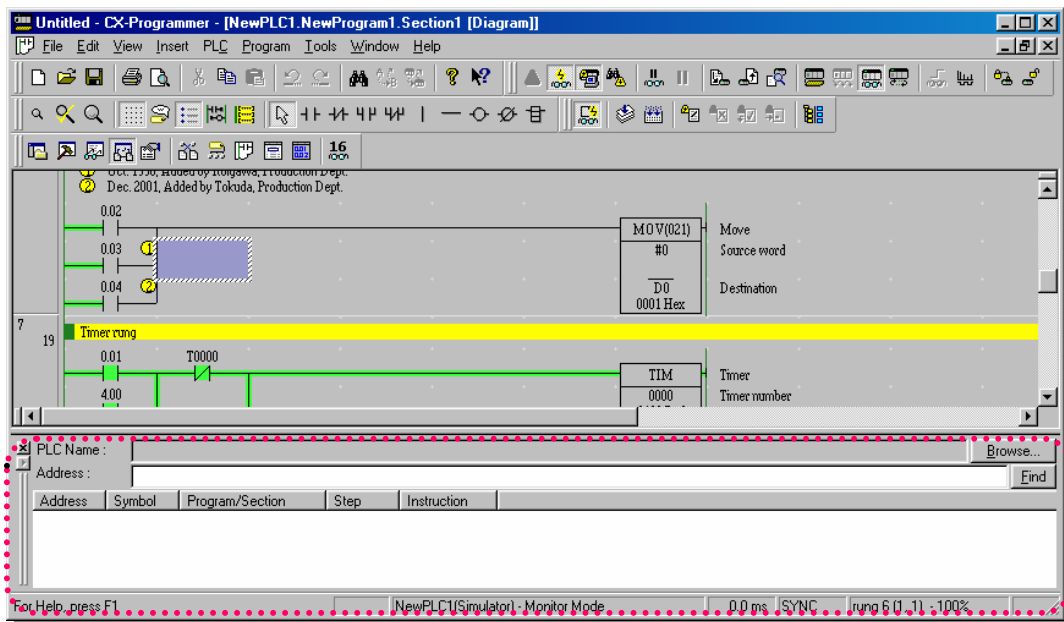
Display Address
Reference Tool.

Alt + 4

Reference

You can also move the
cursor to a bit that you
want to find.

Click a bit that you
want to find, and the
focus will move to the
corresponding position
in the rung.



1

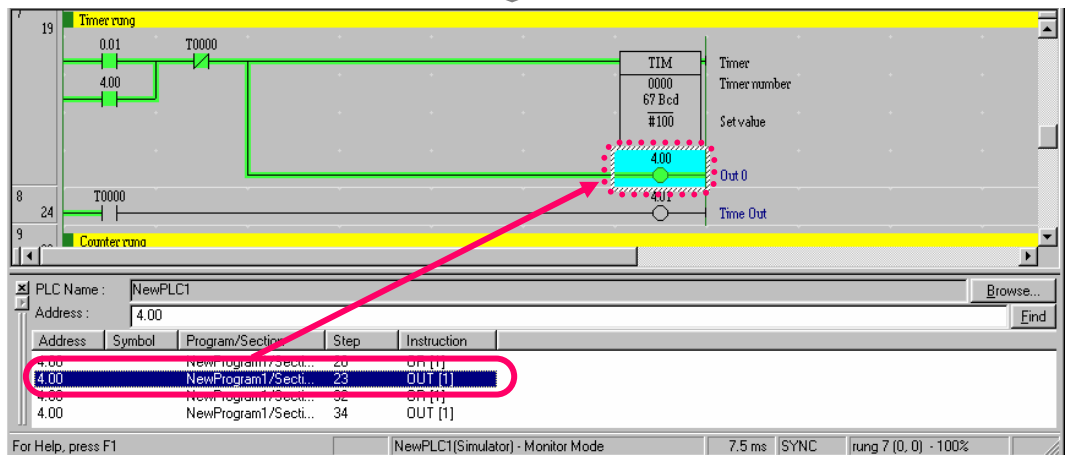
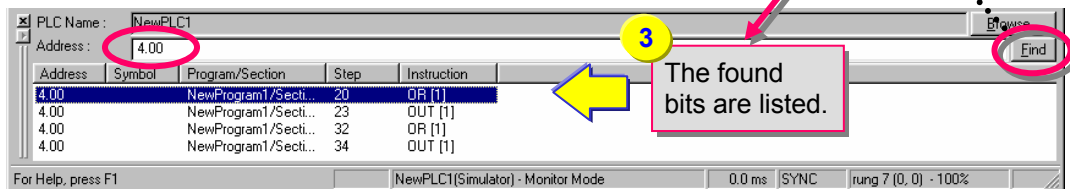
Enter a bit number that you
want to find in the [Address]
field.

2

Click Find

3

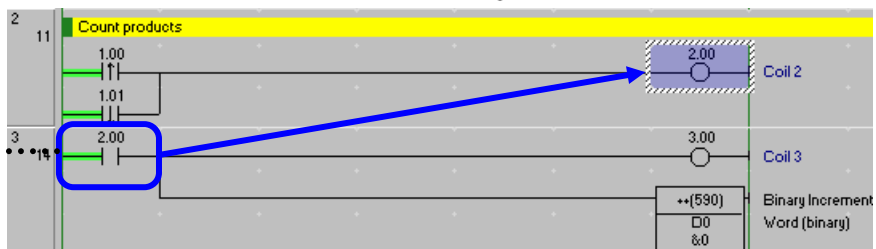
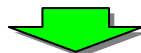
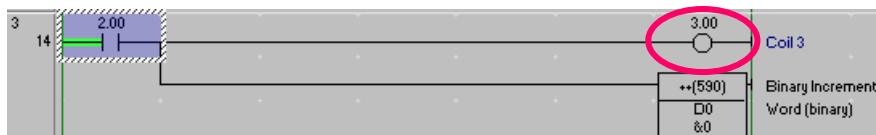
The found
bits are listed.



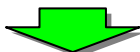
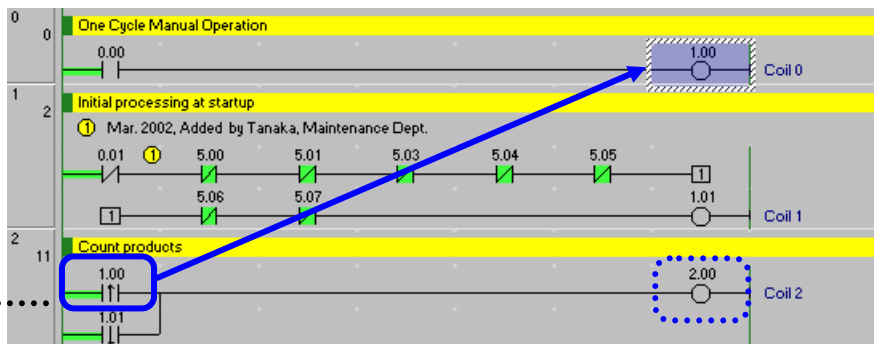
17. Find Function - 2 Retrace Find of Ladders

The function retraces ladder rungs so that you can find the causes of the coils not turned on.

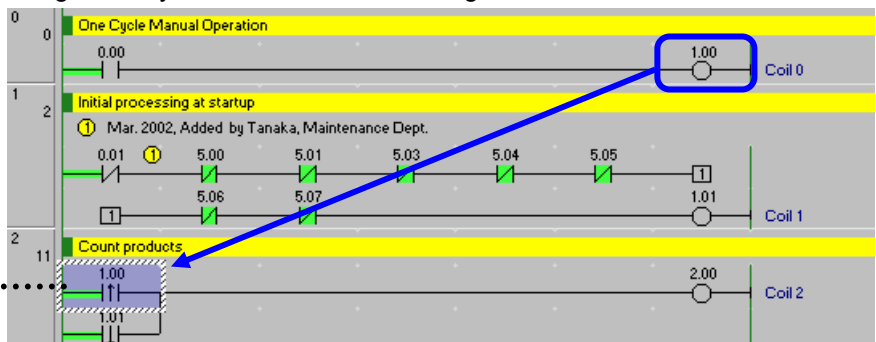
- (1) The reason why the coil 3.00 is not turned on is that its contact 2.00 is not turned on. Therefore, the function retraces rungs to find the coil 2.00.
- (2) Move the cursor to the following position (contact 2.00) and press the [Space] key.



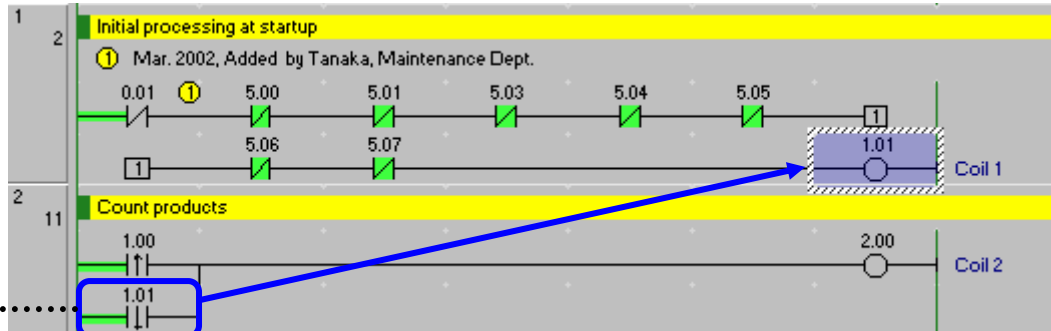
- (3) The reason why the coil 2.00 is not turned on is that the contact 1.00 or 1.01 is not turned on. Suppose the cause is the contact 1.00 and find the coil of 1.00. Move the cursor to the contact 1.00 and press the [Space] key as well as the above operation (2).



- (4) If this rung is not a cause press [Shift]+[Space], and you will be able to go back to the rung before you started to find this rung.



(5) Then retrace rungs to find a cause from the contact 1.01. As well as the operations so far, move the cursor to the contact 1.01 and press the [Space] key.



(6) The focus moves to the coil 1.01. As it turned out, the cause was the contact 0.01 that was not turned on.

Press the [Space] key to jump from a coil to a contact having the same address as the coil or from a contact to a coil in reverse.

Press the [N] key for another jump from a contact or coil at the cursor position to a next one having the same address.

To move back to the position of the last jump, press the [B] key.

This is a useful function available in SYSMAC Support Software.
CX-Programmer inherits it.

Online
to Transfer

Monitoring

Force On
Force Off

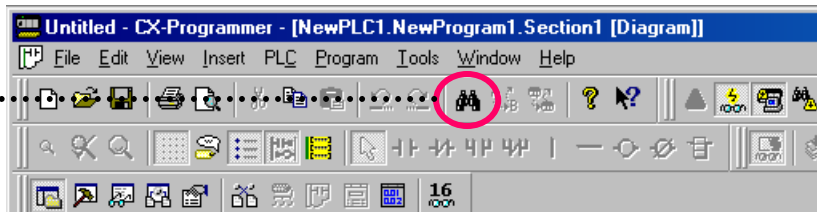
Program
Check

Online
Edit

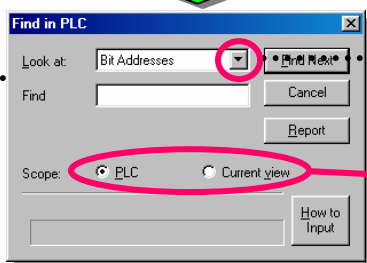
18. Find Function - 3 Find by Keyword in Comment

If you enter an operator's name or an operation date in annotations as a note at startup or maintenance, this function finds the bit or word that the name or date is used and displays the result on Output Window.

Click



The [Find] dialog
shows up.



Click



Select [All (strings)] from the
pull-down menu.

Scope of Find is specifiable.

PLC

To find a target from all tasks
(programs).

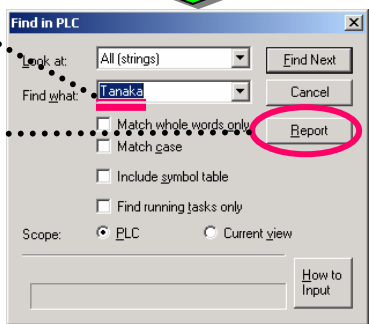
Current view

To find from a section or task
(program) being edited
-> Click an icon in Project
Workspace to select a task.

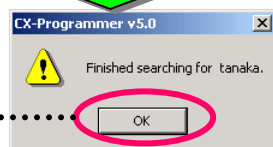
Enter a keyword to
find.

Click

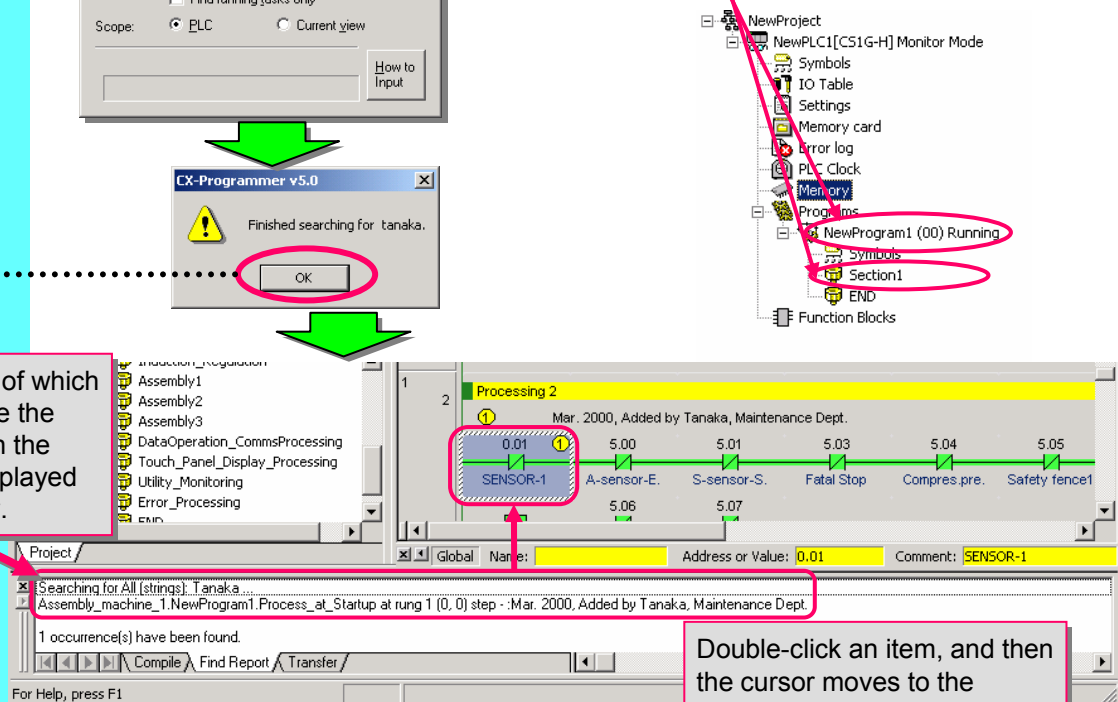
Report



Click [OK].



The contacts/coils of which
annotations include the
keyword entered in the
Find dialog are displayed
on Output Window.



Double-click an item, and then
the cursor moves to the
applicable bit in Ladder
Window.

Online
to Transfer

Monitoring

Force On
Force Off

Program
Check

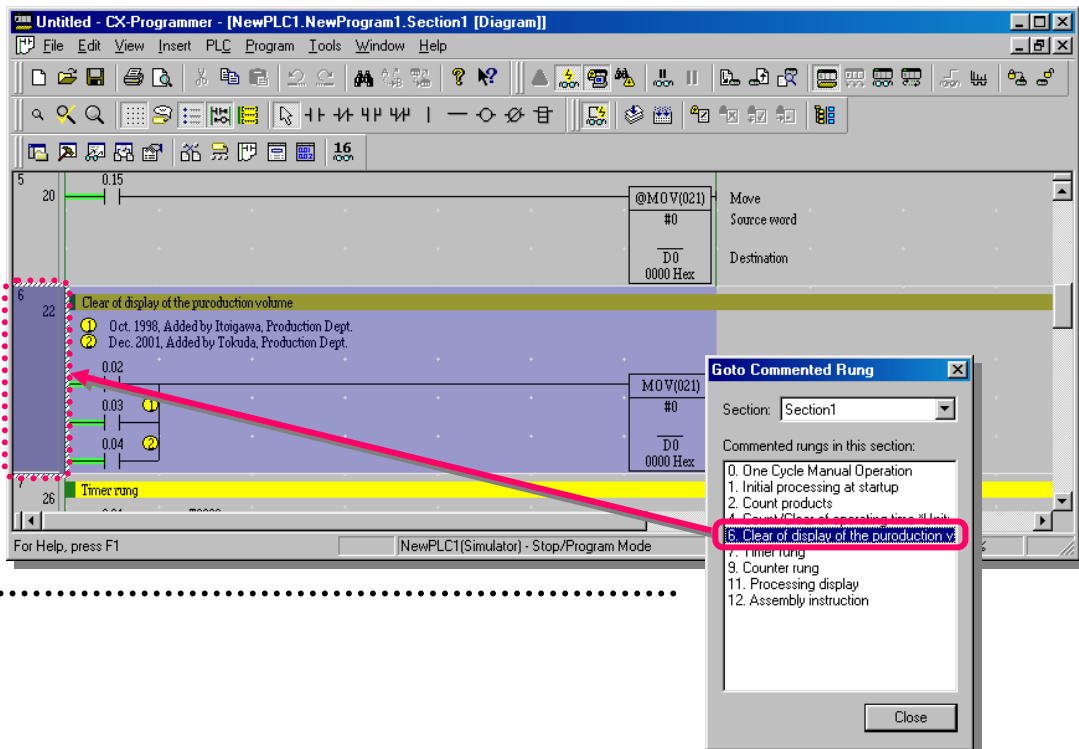
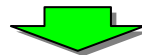
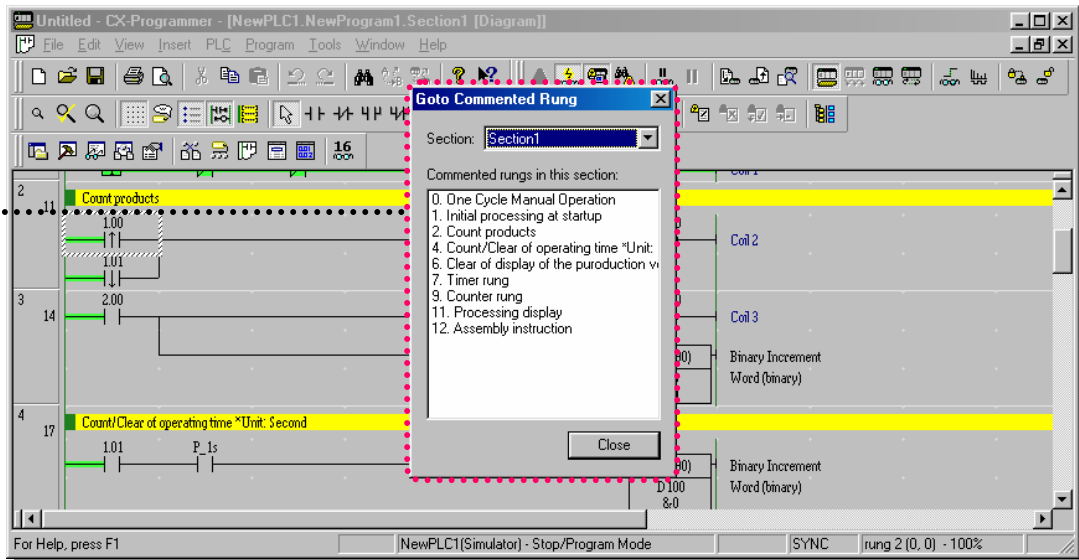
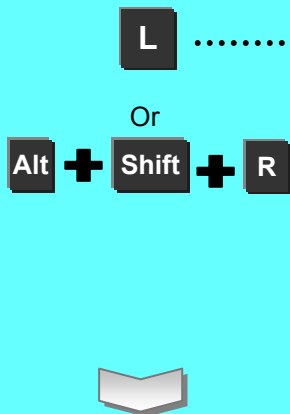
Online
Edit

19. Find Function - 4 Go To Rung Comment

This is a function that displays a list of rung comments on the screen and moves the cursor to the position where a selected rung comment is used in the ladder.

Rung comments improve the efficiency of debug or maintenance of rungs divided into blocks per function.

A list of the rung comments used in rungs are displayed on a separate window.



Click a rung comment in the list, and the cursor goes to the position where the rung comment is used in the ladder.

Online
to Transfer

Monitoring

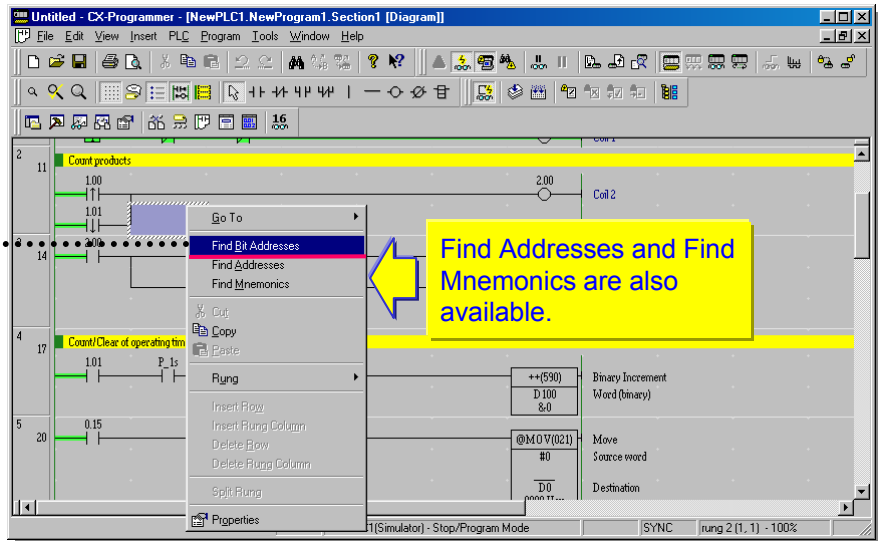
Force On
Force Off

Program
Check

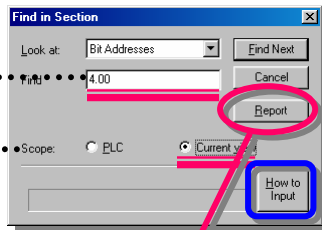
Online
Edit

20. Find Function - 5 Find Bit Addresses

Click the right mouse button on Ladder Window. Select [Find Bit Addresses] from the popup menu.

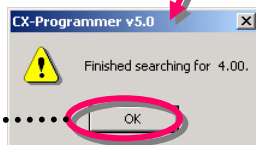


Enter an address (bit number) to find. (period between a channel and a bit is unnecessary.)



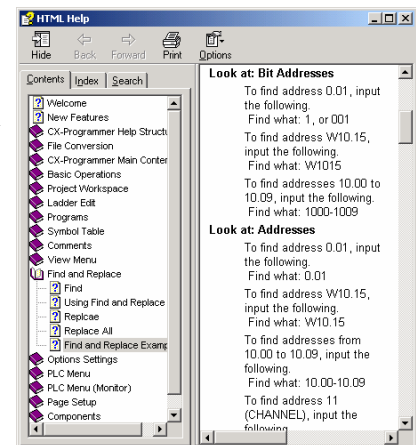
Set the scope of Find (Current view).

Click [Report].

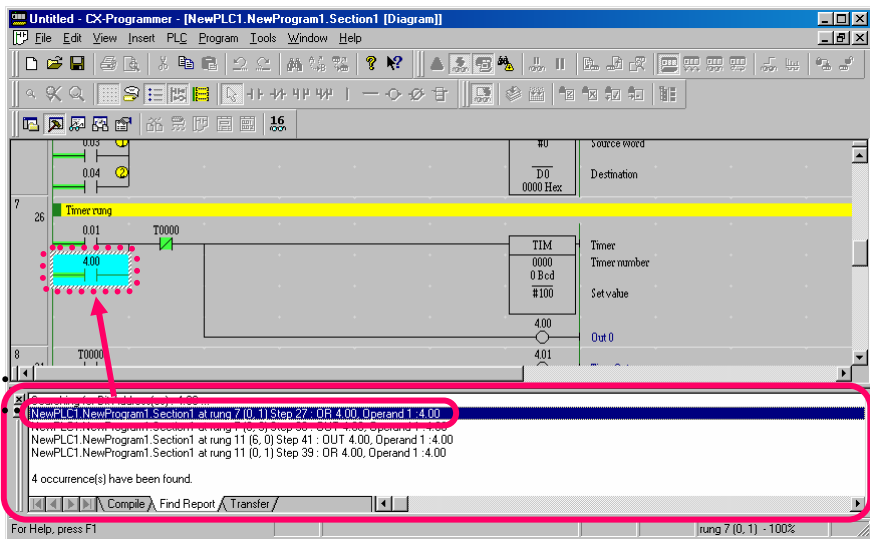


Click [OK].

Click the [How to Input] button, and the Help of [Find and Replace Examples] will be displayed.



Output Window is displayed and the results are listed.



Double-click an item in the list, and the cursor will go to the applicable bit.

Online
to Transfer

Monitoring

Force On
Force Off

Program
Check

Online
Edit

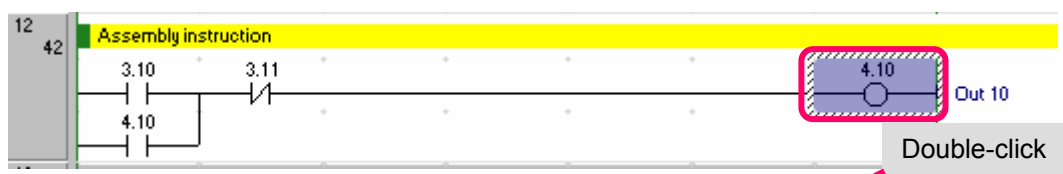
21. Online Edit

(1) Move the cursor to a rung you want to modify.

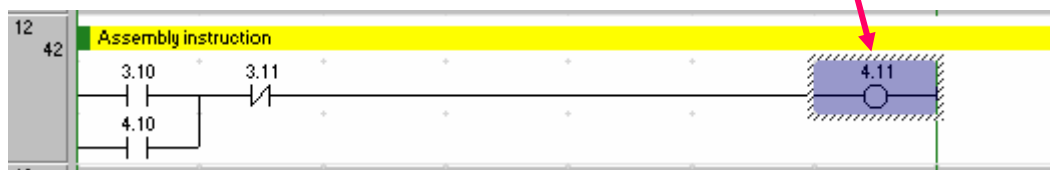


You can also select more than one rung by Drag&Drop with a mouse.

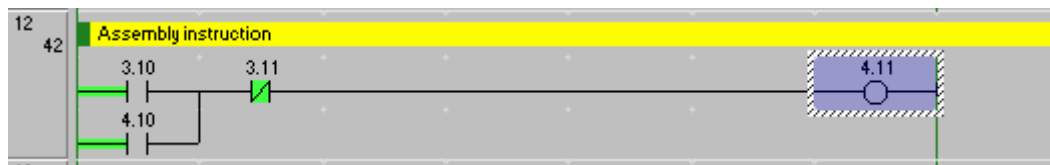
(2) Select [Program] -> [Online Edit] -> [Begin] from the CX-Programmer menu.



(3) Enter a bit number (4.11 in this example) you want to edit to.



(4) Select [Program] -> [Online Edit] -> [Send Changes] from the menu.

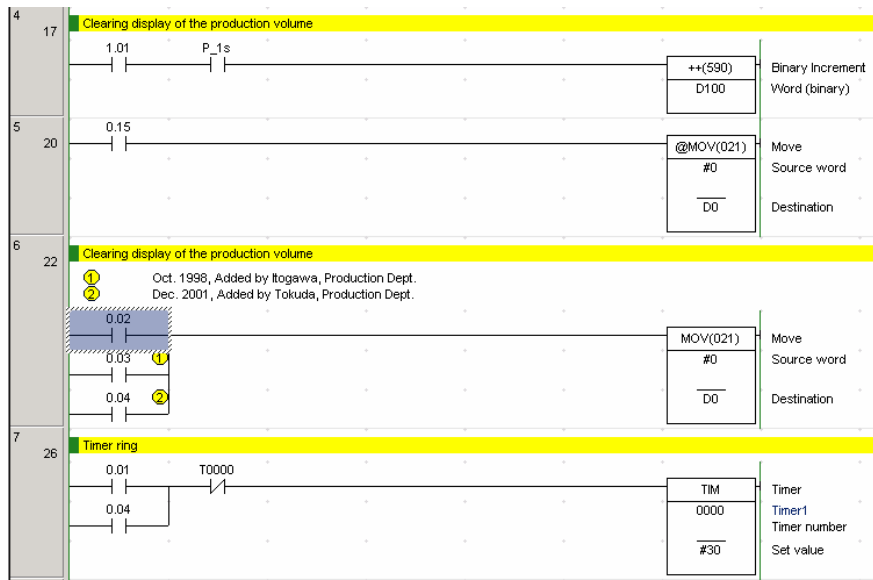


End

Useful Functions

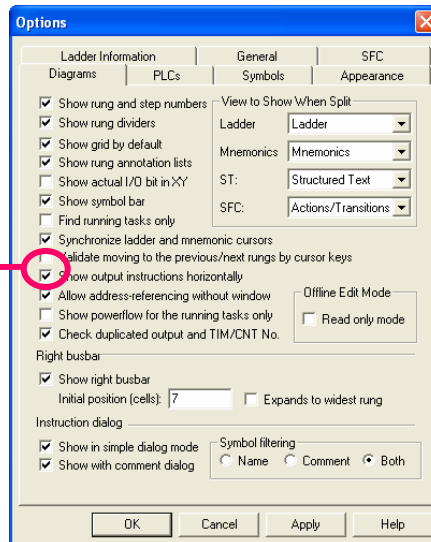
You can select either vertical or horizontal display of output instructions.

Vertical display of output instructions

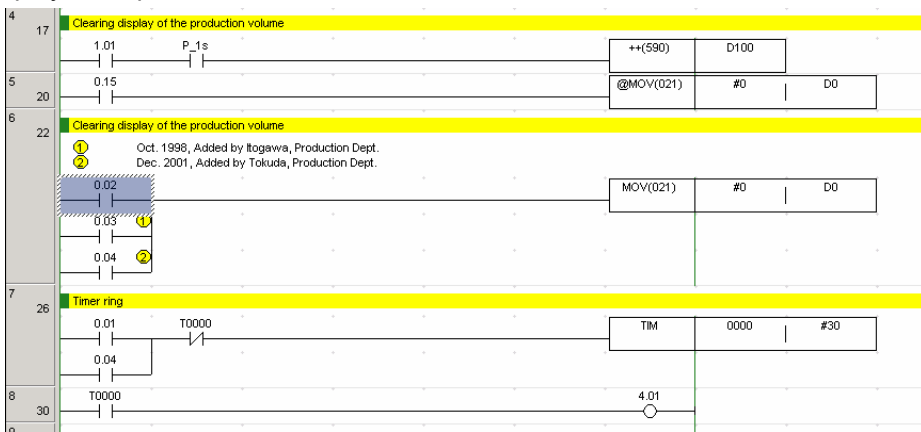


[Tools(T)] -> [Options(O)]

Check the [Show output instructions horizontally (Z)] box.



Horizontal display of output instructions



Terms and Conditions of Sale

1. **Offer; Acceptance.** These terms and conditions (these "Terms") are deemed part of all quotes, agreements, purchase orders, acknowledgments, price lists, catalogs, manuals, brochures and other documents, whether electronic or in writing, relating to the sale of products or services (collectively, the "Products") by Omron Electronics LLC and its subsidiary companies ("Omron"). Omron objects to any terms or conditions proposed in Buyer's purchase order or other documents which are inconsistent with, or in addition to, these Terms.
2. **Prices; Payment Terms.** All prices stated are current, subject to change without notice by Omron. Omron reserves the right to increase or decrease prices on any unshipped portions of outstanding orders. Payments for Products are due net 30 days unless otherwise stated in the invoice.
3. **Discounts.** Cash discounts, if any, will apply only on the net amount of invoices sent to Buyer after deducting transportation charges, taxes and duties, and will be allowed only if (i) the invoice is paid according to Omron's payment terms and (ii) Buyer has no past due amounts.
4. **Interest.** Omron, at its option, may charge Buyer 1-1/2% interest per month or the maximum legal rate, whichever is less, on any balance not paid within the stated terms.
5. **Orders.** Omron will accept no order less than \$200 net billing.
6. **Governmental Approvals.** Buyer shall be responsible for, and shall bear all costs involved in, obtaining any government approvals required for the importation or sale of the Products.
7. **Taxes.** All taxes, duties and other governmental charges (other than general real property and income taxes), including any interest or penalties thereon, imposed directly or indirectly on Omron or required to be collected directly or indirectly by Omron for the manufacture, production, sale, delivery, importation, consumption or use of the Products sold hereunder (including customs duties and sales, excise, use, turnover and license taxes) shall be charged to and remitted by Buyer to Omron.
8. **Financial.** If the financial position of Buyer at any time becomes unsatisfactory to Omron, Omron reserves the right to stop shipments or require satisfactory security or payment in advance. If Buyer fails to make payment or otherwise comply with these Terms or any related agreement, Omron may (without liability and in addition to other remedies) cancel any unshipped portion of Products sold hereunder and stop any Products in transit until Buyer pays all amounts, including amounts payable hereunder, whether or not then due, which are owing to it by Buyer. Buyer shall in any event remain liable for all unpaid accounts.
9. **Cancellation; Etc.** Orders are not subject to rescheduling or cancellation unless Buyer indemnifies Omron against all related costs or expenses.
10. **Force Majeure.** Omron shall not be liable for any delay or failure in delivery resulting from causes beyond its control, including earthquakes, fires, floods, strikes or other labor disputes, shortage of labor or materials, accidents to machinery, acts of sabotage, riots, delay in or lack of transportation or the requirements of any government authority.
11. **Shipping; Delivery.** Unless otherwise expressly agreed in writing by Omron:
 - a. Shipments shall be by a carrier selected by Omron; Omron will not drop ship except in "break down" situations.
 - b. Such carrier shall act as the agent of Buyer and delivery to such carrier shall constitute delivery to Buyer;
 - c. All sales and shipments of Products shall be FOB shipping point (unless otherwise stated in writing by Omron), at which point title and risk of loss shall pass from Omron to Buyer; provided that Omron shall retain a security interest in the Products until the full purchase price is paid;
 - d. Delivery and shipping dates are estimates only; and
 - e. Omron will package Products as it deems proper for protection against normal handling and extra charges apply to special conditions.
12. **Claims.** Any claim by Buyer against Omron for shortage or damage to the Products occurring before delivery to the carrier must be presented in writing to Omron within 30 days of receipt of shipment and include the original transportation bill signed by the carrier noting that the carrier received the Products from Omron in the condition claimed.
13. **Warranties.** (a) **Exclusive Warranty.** Omron's exclusive warranty is that the Products will be free from defects in materials and workmanship for a period of twelve months from the date of sale by Omron (or such other period expressed in writing by Omron). Omron disclaims all other warranties, express or implied. (b) **Limitations.** OMRON MAKES NO WARRANTY OR REPRESENTATION, EXPRESS OR IMPLIED, ABOUT NON-INFRINGEMENT, MERCHANTABILITY OR FITNESS FOR A PARTICULAR PURPOSE OF THE PRODUCTS. BUYER ACKNOWLEDGES THAT IT ALONE HAS DETERMINED THAT THE PRODUCTS WILL SUITABLY MEET THE REQUIREMENTS OF THEIR INTENDED USE. Omron further disclaims all warranties and responsibility of any type for claims or expenses based on infringement by the Products or otherwise of any intellectual property right. (c) **Buyer Remedy.** Omron's sole obligation hereunder shall be, at Omron's election, to (i) replace (in the form originally shipped with Buyer responsible for labor charges for removal or replacement thereof) the non-complying Product, (ii) repair the non-complying Product, or (iii) repay or credit Buyer an amount equal to the purchase price of the non-complying Product; provided that in no event shall Omron be responsible for warranty, repair, indemnity or any other claims or expenses regarding the Products unless Omron's analysis confirms that the Products were properly handled, stored, installed and maintained and not subject to contamination, abuse, misuse or inappropriate modification. Return of any Products by Buyer must be approved in writing by Omron before shipment. Omron Companies shall not be liable for the suitability or unsuitability or the results from the use of Products in combination with any electrical or electronic components, circuits, system assemblies or any other materials or substances or environments. Any advice, recommendations or information given orally or in writing, are not to be construed as an amendment or addition to the above warranty. See <http://www.omron247.com> or contact your Omron representative for published information.
14. **Limitation on Liability; Etc.** OMRON COMPANIES SHALL NOT BE LIABLE FOR SPECIAL, INDIRECT, INCIDENTAL, OR CONSEQUENTIAL DAMAGES, LOSS OF PROFITS OR PRODUCTION OR COMMERCIAL LOSS IN ANY WAY CONNECTED WITH THE PRODUCTS, WHETHER SUCH CLAIM IS BASED IN CONTRACT, WARRANTY, NEGLIGENCE OR STRICT LIABILITY. Further, in no event shall liability of Omron Companies exceed the individual price of the Product on which liability is asserted.
15. **Indemnities.** Buyer shall indemnify and hold harmless Omron Companies and their employees from and against all liabilities, losses, claims, costs and expenses (including attorney's fees and expenses) related to any claim, investigation, litigation or proceeding (whether or not Omron is a party) which arises or is alleged to arise from Buyer's acts or omissions under these Terms or in any way with respect to the Products. Without limiting the foregoing, Buyer (at its own expense) shall indemnify and hold harmless Omron and defend or settle any action brought against such Companies to the extent based on a claim that any Product made to Buyer specifications infringed intellectual property rights of another party.
16. **Property; Confidentiality.** Any intellectual property in the Products is the exclusive property of Omron Companies and Buyer shall not attempt to duplicate it in any way without the written permission of Omron. Notwithstanding any charges to Buyer for engineering or tooling, all engineering and tooling shall remain the exclusive property of Omron. All information and materials supplied by Omron to Buyer relating to the Products are confidential and proprietary, and Buyer shall limit distribution thereof to its trusted employees and strictly prevent disclosure to any third party.
17. **Export Controls.** Buyer shall comply with all applicable laws, regulations and licenses regarding (i) export of products or information; (ii) sale of products to "forbidden" or other proscribed persons; and (iii) disclosure to non-citizens of regulated technology or information.
18. **Miscellaneous.** (a) **Waiver.** No failure or delay by Omron in exercising any right and no course of dealing between Buyer and Omron shall operate as a waiver of rights by Omron. (b) **Assignment.** Buyer may not assign its rights hereunder without Omron's written consent. (c) **Law.** These Terms are governed by the law of the jurisdiction of the home office of the Omron company from which Buyer is purchasing the Products (without regard to conflict of law principles). (d) **Amendment.** These Terms constitute the entire agreement between Buyer and Omron relating to the Products, and no provision may be changed or waived unless in writing signed by the parties. (e) **Severability.** If any provision hereof is rendered ineffective or invalid, such provision shall not invalidate any other provision. (f) **Setoff.** Buyer shall have no right to set off any amounts against the amount owing in respect of this invoice. (g) **Definitions.** As used herein, "including" means "including without limitation"; and "Omron Companies" (or similar words) mean Omron Corporation and any direct or indirect subsidiary or affiliate thereof.

Certain Precautions on Specifications and Use

1. **Suitability of Use.** Omron Companies shall not be responsible for conformity with any standards, codes or regulations which apply to the combination of the Product in the Buyer's application or use of the Product. At Buyer's request, Omron will provide applicable third party certification documents identifying ratings and limitations of use which apply to the Product. This information by itself is not sufficient for a complete determination of the suitability of the Product in combination with the end product, machine, system, or other application or use. Buyer shall be solely responsible for determining appropriateness of the particular Product with respect to Buyer's application, product or system. Buyer shall take application responsibility in all cases but the following is a non-exhaustive list of applications for which particular attention must be given:
 - (i) Outdoor use, uses involving potential chemical contamination or electrical interference, or conditions or uses not described in this document.
 - (ii) Use in consumer products or any use in significant quantities.
 - (iii) Energy control systems, combustion systems, railroad systems, aviation systems, medical equipment, amusement machines, vehicles, safety equipment, and installations subject to separate industry or government regulations.
 - (iv) Systems, machines and equipment that could present a risk to life or property. Please know and observe all prohibitions of use applicable to this Product.
 NEVER USE THE PRODUCT FOR AN APPLICATION INVOLVING SERIOUS RISK TO LIFE OR PROPERTY OR IN LARGE QUANTITIES WITHOUT ENSURING THAT THE SYSTEM AS A WHOLE HAS BEEN DESIGNED TO ADDRESS THE RISKS, AND THAT THE OMRON'S PRODUCT IS PROPERLY RATED AND INSTALLED FOR THE INTENDED USE WITHIN THE OVERALL EQUIPMENT OR SYSTEM.
2. **Programmable Products.** Omron Companies shall not be responsible for the user's programming of a programmable Product, or any consequence thereof.
3. **Performance Data.** Data presented in Omron Company websites, catalogs and other materials is provided as a guide for the user in determining suitability and does not constitute a warranty. It may represent the result of Omron's test conditions, and the user must correlate it to actual application requirements. Actual performance is subject to the Omron's Warranty and Limitations of Liability.
4. **Change in Specifications.** Product specifications and accessories may be changed at any time based on improvements and other reasons. It is our practice to change part numbers when published ratings or features are changed, or when significant construction changes are made. However, some specifications of the Product may be changed without any notice. When in doubt, special part numbers may be assigned to fix or establish key specifications for your application. Please consult with your Omron's representative at any time to confirm actual specifications of purchased Product.
5. **Errors and Omissions.** Information presented by Omron Companies has been checked and is believed to be accurate; however, no responsibility is assumed for clerical, typographical or proofreading errors or omissions.



Automation...simple...powerful.

OMRON ELECTRONICS LLC • THE AMERICAS HEADQUARTERS

Schaumburg, IL USA • 847.843.7900 • 800.556.6766 • www.omron247.com

OMRON CANADA, INC. • HEAD OFFICE

Toronto, ON, Canada • 416.286.6465 • 866.986.6766 • www.omron.ca

OMRON ELETRÔNICA DO BRASIL LTDA • HEAD OFFICE

São Paulo, SP, Brasil • 55.11.2101.6300 • www.omron.com.br

OMRON ELECTRONICS MEXICO SA DE CV • HEAD OFFICE

Apodaca, N.L. • 52.811.156.99.10 • mela@omron.com

OMRON ARGENTINA • SALES OFFICE

Cono Sur • 54.11.4787.1129

OMRON CHILE • SALES OFFICE

Santiago 56.2206.4592

OTHER OMRON LATIN AMERICA SALES

56.2206.4592